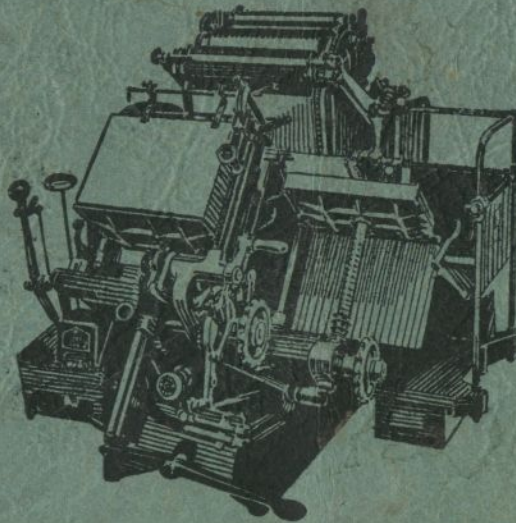


Thompson-British Automatic Platen

LIST OF PARTS



MAKERS

T. C. THOMPSON & SON LTD.
Buxton Street, London Road
Manchester 1

(800)

11893

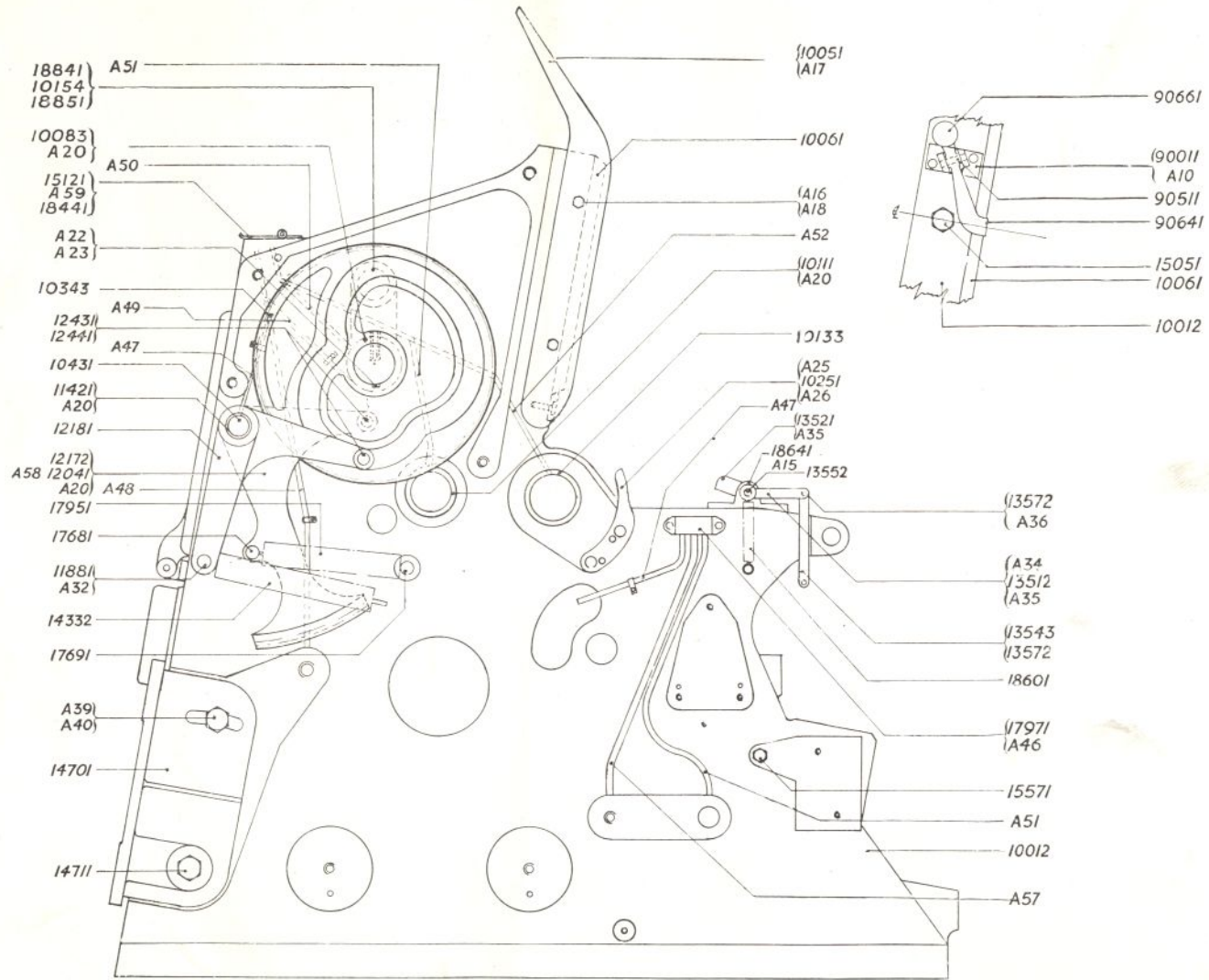
THOMPSON-BRITISH AUTO PLATEN

LIST OF PARTS

MACHINE N^o. :- 13527

YEAR MANUFACTURED :- AUGUST 1952.

A



UNIT 'A' BODY

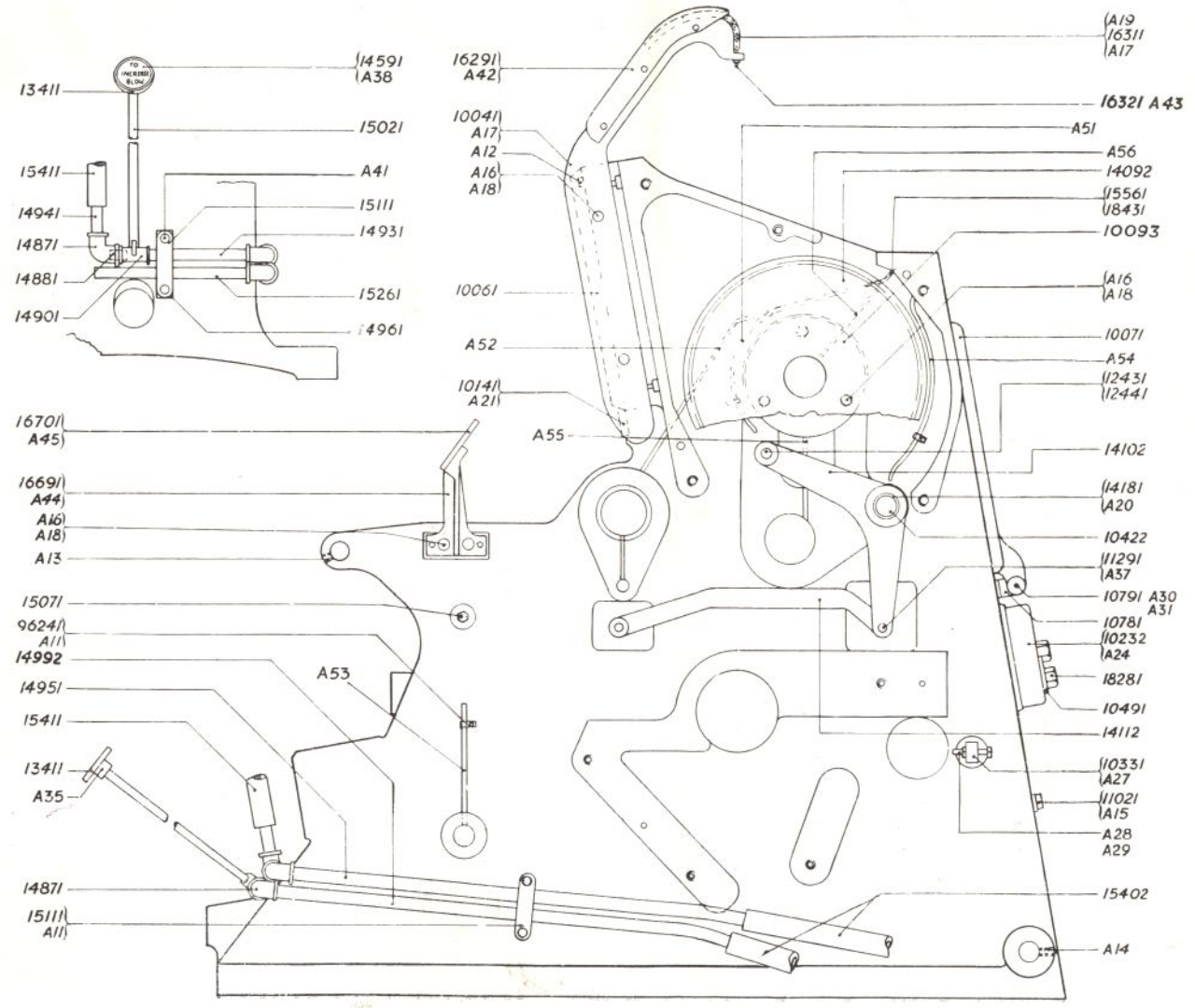
| Ref. No. | Qty. | Name | Ref. No. | Qty. | Name |
|----------|------|----------------------------------|----------|------|-------------------------------------|
| 90011 | 1 | Chase Clip Bracket. | 14102 | 1 | Delivery Cam Lever. |
| 90511 | 1 | Pin for Chase Clip. | 14112 | 1 | Delivery Slide Connecting Rod. |
| 90641 | 1 | Chase Clip (Top). | 14181 | 1 | Bush for 1410. |
| 90661 | 1 | Lock Screw for Chase Clip. | 14332 | 1 | Spring for Sucker Bar Slide. |
| 96241 | 6 | Clip for Oil Pipe. | 14591 | 1 | Index Disc for Blower. |
| 10012 | 1 | Body. | 14701 | 1 | Motor Bracket. |
| 10041 | 1 | Roller Bearer (R.H.) | 14711 | 1 | Motor Bracket Stud. |
| 10051 | 1 | Roller Bearer (L.H.) | 14871 | 3 | 3/8" Gas Elbow. |
| 10061 | 1 | Chase. | 14881 | 1 | 3/8" Running Nipple. |
| 10071 | 1 | Cover Plate. | 14901 | 1 | 3/8" Gas Tap. |
| 10083 | 1 | Main Crank Bush (Plain). | 14931 | 1 | Pump Blow and Front Tube. |
| 10093 | 1 | Main Crank Bush (Flanged). | 14941 | 1 | Pump Suction and Blow Upright Tube. |
| 10111 | 1 | Flywheel Shaft Bush. | 14951 | 1 | Pump Blow Tube. |
| 10133 | 2 | Toggle Shaft Bush. | 14961 | 1 | Plate for 1511. |
| 10141 | 2 | Chase Rest. | 14992 | 1 | Pump Suction Tube. |
| 10154 | 1 | Main Crank Shaft. | 15021 | 1 | Index Connecting Rod. |
| 10232 | 1 | Thrust Bearing Plate. | 15051 | 1 | Platen Plug Screw. |
| 10251 | 1 | Register Lift Cam. | 15071 | 1 | Screw for 1506. |
| 10331 | 1 | Clack Valve Operating Stud. | 15111 | 2 | Air Tube Double Clip. |
| 10343 | 1 | Main Cam Gear Wheel. | 15121 | 2 | Oil Box Cover. |
| 10422 | 1 | Pin for Cam Lever. | 15261 | 1 | Knock-off Suction Tube. |
| 10431 | 1 | Pin for 1218. | 15402 | 2 | Tubing for Pump Blow. |
| 10491 | 1 | Gap Wahser for 1023. | 15411 | 1 | Tubing for Front Blow. |
| 10781 | 1 | Bracket for 1007. | 15561 | 15 | Oil Wick Feed. |
| 10791 | 1 | Pin for 1078. | 15571 | 1 | Setting Stud for 1082. |
| 11021 | 1 | Leather Washet for 1001. | 16291 | 1 | Inking Roller Clutch Plate. |
| 11291 | 1 | Pin for 1411. | 16311 | 1 | Chain. |
| 11421 | 2 | Bush for 1218. | 16321 | 1 | Tightening Screw for Chain. |
| 11881 | 1 | Spring Pin for 1218. | 16691 | 1 | Register Set Bracket. |
| 12041 | 1 | Bush for 1217. | 16701 | 1 | Register Set Bracket Plate. |
| 12172 | 1 | Feed Cam Quadrant Lever. | 17681 | 1 | Spring Stud for 1217. |
| 12181 | 1 | Feed Cam Bellcrank Lever. | 17691 | 1 | Spring Stud in Body for 1217. |
| 12431 | 3 | Needle Bearing for 1244. | 17951 | 1 | Spring for 1217. |
| 12441 | 3 | Cam Bowl Stud. | 17971 | 1 | Oil Box. |
| 13411 | 1 | Pile Height Adjusting Handwheel. | 18281 | 4 | Bolt for Thrust Bearing Plate. |
| 13512 | 1 | Counter Operating Lever. | 18431 | 1 | Oil Tube Holder. |
| 13521 | 1 | Counter Trip Lever. | 18441 | 1 | Oil Tube Holder. |
| 13543 | 1 | Counter Connecting Lever. | 18601 | 1 | Counter Spring. |
| 13552 | 1 | Fulcrum Pin for 1315. | 18641 | 1 | Trip Lever Bracket. |
| 13572 | 2 | Counter Lever Stud. | 18841 | 1 | Lock for 1034. |
| 14092 | 1 | Delivery Cam. | 18851 | 1 | Nut for 1884. |

A

UNIT 'A' STANDARD PARTS

| Ref. No. | Use with | Qty. | Description | Size | Length | Ref. No. | Use with | Qty. | Description | Size | Length |
|----------|----------|------|-----------------------|--------------------|-------------------------|----------|----------|------|------------------------|------------------|-------------------------|
| A 10 | 90011 | 2 | Cone Head Screw | $\frac{1}{8}$ " | B.S.F. $1\frac{1}{2}$ " | A 29 | 10331 | 1 | Nut. | $\frac{3}{8}$ " | B.S.F. |
| A 11 | 96241 | 6 | Button Head Screw | $\frac{3}{32}$ " | Whit. $1\frac{1}{2}$ " | A 30 | 10781 | 2 | Cone Head Screw. | $\frac{5}{16}$ " | B.S.F. $1\frac{1}{2}$ " |
| A 11 | 15111 | 2 | Button Head Screw. | $\frac{1}{16}$ " | Whit. $1\frac{1}{2}$ " | A 31 | 10781 | 1 | Allen Grub Screw. | $\frac{1}{4}$ " | B.S.F. $1\frac{1}{4}$ " |
| A 12 | 10012 | 1 | Cheese Head Screw. | $\frac{1}{2}$ " | B.S.F. $1\frac{1}{2}$ " | A 32 | 11881 | 2 | Split Pin. | $\frac{5}{32}$ " | dia. $1\frac{1}{4}$ " |
| A 13 | 10012 | 1 | Allen Grub Screw. | $\frac{5}{16}$ " | B.S.F. $1\frac{1}{2}$ " | A 34 | 13512 | 1 | Allen Grub Screw. | $\frac{5}{16}$ " | B.S.F. $1\frac{1}{4}$ " |
| A 14 | 10012 | 1 | Allen Grub Screw. | $\frac{1}{16}$ " | B.S.F. $1\frac{1}{2}$ " | A 35 | 13411 | 1 | Taper Pin. | No. 0 | $1\frac{1}{2}$ " |
| A 15 | 10012 | 1 | Hex. Head Screw | $\frac{1}{8}$ " | B.S.F. $1\frac{1}{2}$ " | A 35 | 13512 | 1 | Taper Pin. | No. 0 | $1\frac{1}{2}$ " |
| A 15 | 18641 | 2 | Hex. Head Screw. | $\frac{1}{8}$ " | B.S.F. $1\frac{1}{2}$ " | A 35 | 13521 | 1 | Taper Pin. | No. 0 | $1\frac{1}{2}$ " |
| A 16 | 10041 | 2 | Hex. Head Screw. | $\frac{1}{16}$ " | B.S.F. $1\frac{1}{2}$ " | A 36 | 13572 | 2 | Split Pin. | $\frac{1}{16}$ " | dia. $1\frac{1}{2}$ " |
| A 16 | 10051 | 2 | Hex. Head Screw. | $\frac{5}{16}$ " | B.S.F. $1\frac{1}{2}$ " | A 37 | 14102 | 1 | Split Pin. | $\frac{1}{8}$ " | dia. $1\frac{1}{2}$ " |
| A 16 | 10093 | 3 | Hex. Head Screw. | $\frac{1}{16}$ " | B.S.F. $1\frac{1}{2}$ " | A 38 | 14591 | 2 | Rivet (Parker Kalon). | $\frac{1}{8}$ " | dia. $1\frac{1}{2}$ " |
| A 16 | 16691 | 2 | Hex. Head Screw. | $\frac{1}{16}$ " | B.S.F. $1\frac{1}{2}$ " | A 39 | 14701 | 1 | Hex. Head Screw. | $\frac{1}{8}$ " | Whit. $1\frac{1}{2}$ " |
| A 17 | 10041 | 2 | Hex. Head Screw. | $\frac{7}{32}$ " | Whit. $1\frac{1}{2}$ " | A 40 | 14701 | 1 | Washer. | $\frac{1}{8}$ " | dia. $1\frac{1}{2}$ " |
| A 17 | 10051 | 2 | Hex. Head Screw. | $\frac{7}{32}$ " | Whit. $1\frac{1}{2}$ " | A 41 | 15111 | 2 | Button Head Screw. | $\frac{3}{16}$ " | Whit. $1\frac{1}{2}$ " |
| A 17 | 16311 | 1 | Hex. Head Screw | $\frac{7}{32}$ " | Whit. $1\frac{1}{2}$ " | A 42 | 16291 | 3 | Cone Head Screw. | $\frac{7}{32}$ " | Whit. $1\frac{1}{2}$ " |
| A 18 | 10041 | 2 | Washer. | $\frac{5}{16}$ " | dia. $1\frac{1}{2}$ " | A 43 | 16321 | 1 | Nut. | $\frac{3}{32}$ " | Whit. $3\frac{1}{8}$ " |
| A 18 | 10051 | 2 | Washer. | $\frac{1}{16}$ " | dia. $1\frac{1}{2}$ " | A 44 | 16691 | 2 | Dowel. | $\frac{3}{16}$ " | dia. $3\frac{1}{8}$ " |
| A 18 | 16691 | 2 | Washer. | $\frac{5}{16}$ " | dia. $1\frac{1}{2}$ " | A 45 | 16701 | 2 | Allen Cap Head Screw. | $\frac{1}{4}$ " | B.S.F. $3\frac{1}{8}$ " |
| A 19 | 16311 | 1 | Washer. | 0 | B.A. $1\frac{1}{2}$ " | A 46 | 17971 | 2 | Cone Head Screw. | $\frac{3}{16}$ " | Whit. $3\frac{1}{8}$ " |
| A 20 | 10083 | 2 | Allen Grub Screw. | 2 | B.A. $1\frac{1}{2}$ " | A 47 | 10012 | 2 | Oil Pipe. | $\frac{1}{4}$ " | dia. $12\frac{1}{2}$ " |
| A 20 | 10111 | 1 | Allen Grub Screw. | 2 | B.A. $1\frac{1}{2}$ " | A 48 | 10012 | 1 | Oil Pipe. | $\frac{1}{4}$ " | dia. $26\frac{1}{2}$ " |
| A 20 | 11421 | 2 | Allen Grub Screw. | 2 | B.A. $1\frac{1}{2}$ " | A 49 | 10012 | 1 | Oil Pipe. | $\frac{1}{4}$ " | dia. $11\frac{1}{2}$ " |
| A 20 | 12041 | 1 | Allen Grub Screw | 2 | B.A. $1\frac{1}{2}$ " | A 50 | 10012 | 1 | Oil Pipe. | $\frac{1}{4}$ " | dia. $8\frac{1}{2}$ " |
| A 20 | 14181 | 1 | Allen Grub Screw. | 2 | B.A. $1\frac{1}{2}$ " | A 51 | 10012 | 3 | Oil Pipe. | $\frac{1}{4}$ " | dia. $20\frac{1}{2}$ " |
| A 21 | 10141 | 2 | Allen Cap Head Screw. | $\frac{5}{16}$ " | B.S.F. $1\frac{1}{2}$ " | A 52 | 10012 | 2 | Oil Pipe. | $\frac{1}{4}$ " | dia. $24\frac{1}{2}$ " |
| A 22 | 10154 | 1 | Key Steel. | x $\frac{7}{16}$ " | $3\frac{7}{8}$ " | A 53 | 10012 | 1 | Oil Pipe. | $\frac{1}{4}$ " | dia. $7\frac{1}{2}$ " |
| A 23 | 10154 | 1 | Key Steel. | x $\frac{9}{16}$ " | $1\frac{3}{8}$ " | A 54 | 10012 | 1 | Oil Pipe. | $\frac{1}{4}$ " | dia. $14\frac{1}{2}$ " |
| A 24 | 10232 | 1 | Hex. Head Screw. | $\frac{1}{8}$ " | Whit. $3\frac{1}{2}$ " | A 55 | 10012 | 1 | Oil Pipe. | $\frac{1}{4}$ " | dia. $6\frac{1}{2}$ " |
| A 25 | 10251 | 2 | Dowel. | $\frac{1}{4}$ " | dia. $1\frac{1}{4}$ " | A 56 | 10012 | 1 | Oil Pipe. | $\frac{1}{4}$ " | dia. $9\frac{1}{2}$ " |
| A 26 | 10251 | 2 | Allen Cap Head Screw. | $\frac{5}{16}$ " | B.S.F. $1\frac{1}{2}$ " | A 57 | 10012 | 1 | Oil Pipe. | $\frac{1}{4}$ " | dia. $18\frac{1}{2}$ " |
| A 27 | 10331 | 1 | Locknut. | $\frac{1}{8}$ " | Whit. $1\frac{1}{2}$ " | A 58 | 12172 | 1 | Oil Pipe. | $\frac{3}{16}$ " | dia. $11\frac{1}{2}$ " |
| A 28 | 10331 | 1 | Hex. Head Screw. | $\frac{1}{8}$ " | B.S.F. $2\frac{1}{2}$ " | A 59 | 15121 | 4 | Rivet " Parker Kalon " | $\frac{3}{16}$ " | dia. $3\frac{1}{8}$ " |

A



B

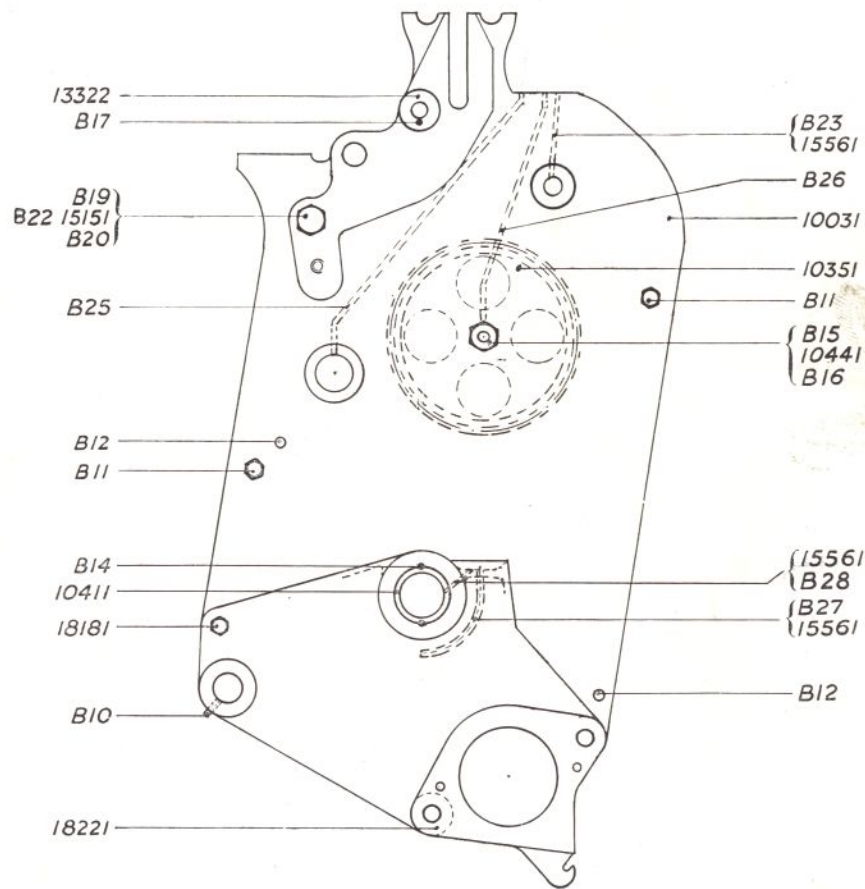
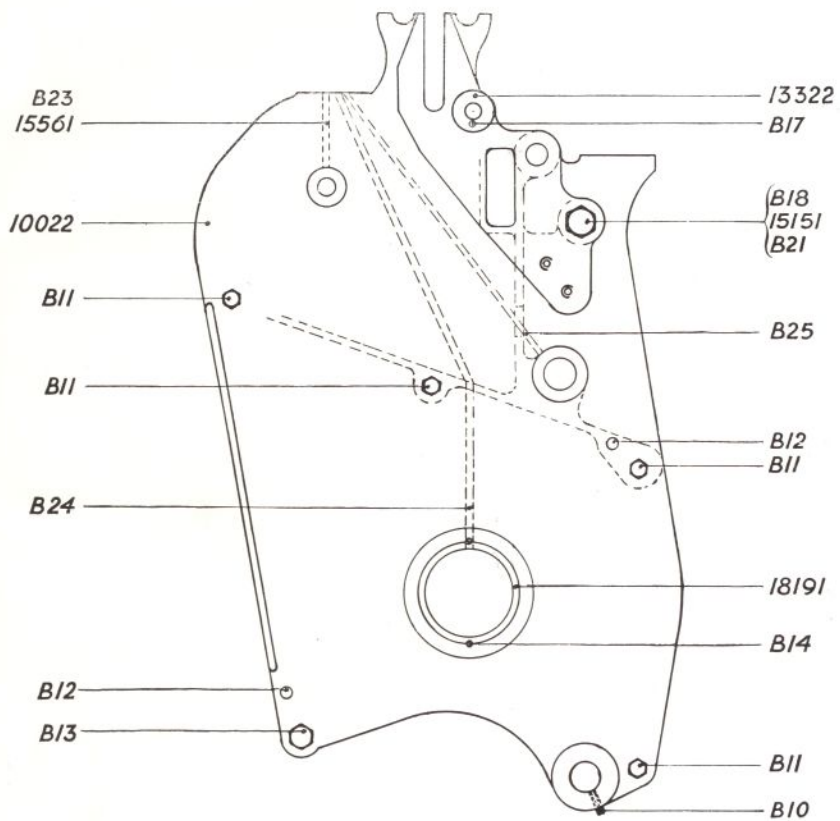
UNIT 'B' SIDE PLATES

| Ref. No. | Qty. | Name | Ref. No. | Qty. | Name |
|----------|------|--------------------------------|----------|------|-------------------|
| 10022 | 1 | Side Plate (R.H.) | 15151 | 1 | Stay. |
| 10031 | 1 | Side Plate (L.H.) | 15561 | 8 | Oil Wick. |
| 10351 | 1 | Drum Intermediate Gear Wheel. | 18181 | 1 | Bolt for 1003. |
| 10411 | 1 | Bush for 10161 and 1003. | 18191 | 1 | Bush for 1002. |
| 10441 | 1 | Stud for 1035. | 19221 | 1 | Make up for Body. |
| 13322 | 2 | Bush for Reciprocating Roller. | | | |

UNIT 'B' STANDARD PARTS

| Ref. No. | Use with | Qty. | Description | Size | Length | No. Ref. | Use with | Qty. | Description | Size | Length |
|----------|----------|------|-------------------|------------------|-------------------|----------|----------|------|------------------|------------------|-------------------|
| B 10 | 10022 | 1 | Allen Grub Screw. | $\frac{5}{16}$ " | 1" | B 19 | 15151 | 2 | Nut. | $\frac{5}{16}$ " | |
| B 10 | 10031 | 1 | Allen Grub Screw. | $\frac{5}{16}$ " | $\frac{1}{2}$ " | B 20 | 15151 | 1 | Hex. Head Screw. | $\frac{5}{16}$ " | 3" |
| B 11 | 10022 | 4 | Hex. Head Screw. | $\frac{1}{4}$ " | 2 $\frac{1}{2}$ " | B 21 | 15151 | 1 | Hex. Head Screw. | $\frac{1}{4}$ " | 2 $\frac{1}{2}$ " |
| B 11 | 10031 | 2 | Hex. Head Screw. | $\frac{1}{4}$ " | 2 $\frac{1}{2}$ " | B 22 | 15151 | 1 | Washer. | $\frac{1}{4}$ " | |
| B 12 | 10022 | 2 | Dowel. | $\frac{1}{4}$ " | 2 $\frac{1}{2}$ " | B 23 | 10022 | 1 | Oil Pipe. | $\frac{1}{4}$ " | 6" |
| B 12 | 10031 | 2 | Dowel. | $\frac{1}{4}$ " | 2 $\frac{1}{2}$ " | B 23 | 10031 | 1 | Oil Pipe. | $\frac{1}{4}$ " | 6" |
| B 13 | 10022 | 1 | Hex. Head Screw. | $\frac{1}{4}$ " | 2 $\frac{1}{2}$ " | B 24 | 10022 | 1 | Oil Pipe. | $\frac{1}{4}$ " | 24" |
| B 14 | 10411 | 2 | Allen Grub Screw. | 2 B.A. | $\frac{1}{2}$ " | B 25 | 10022 | 1 | Oil Pipe. | $\frac{1}{4}$ " | 15" |
| B 14 | 18191 | 2 | Allen Grub Screw. | 2 B.A. | $\frac{1}{2}$ " | B 25 | 10031 | 1 | Oil Pipe. | $\frac{1}{4}$ " | 15" |
| B 15 | 10441 | 1 | Locknut. | $\frac{5}{16}$ " | | B 26 | 10022 | 1 | Oil Pipe. | $\frac{1}{4}$ " | 12" |
| B 16 | 10441 | 1 | Feather Peg. | $\frac{1}{8}$ " | $\frac{3}{4}$ " | B 26 | 10031 | 1 | Oil Pipe. | $\frac{1}{4}$ " | 12" |
| B 17 | 13322 | 2 | Cone Head Screw. | $\frac{3}{32}$ " | $\frac{1}{4}$ " | B 27 | 10031 | 1 | Oil Pipe. | $\frac{1}{4}$ " | 8" |
| B 18 | 15151 | 2 | Hex, Head Screw, | $\frac{5}{16}$ " | 2 $\frac{1}{2}$ " | B 28 | 10031 | 1 | Oil Pipe. | $\frac{1}{4}$ " | 3" |

B



C

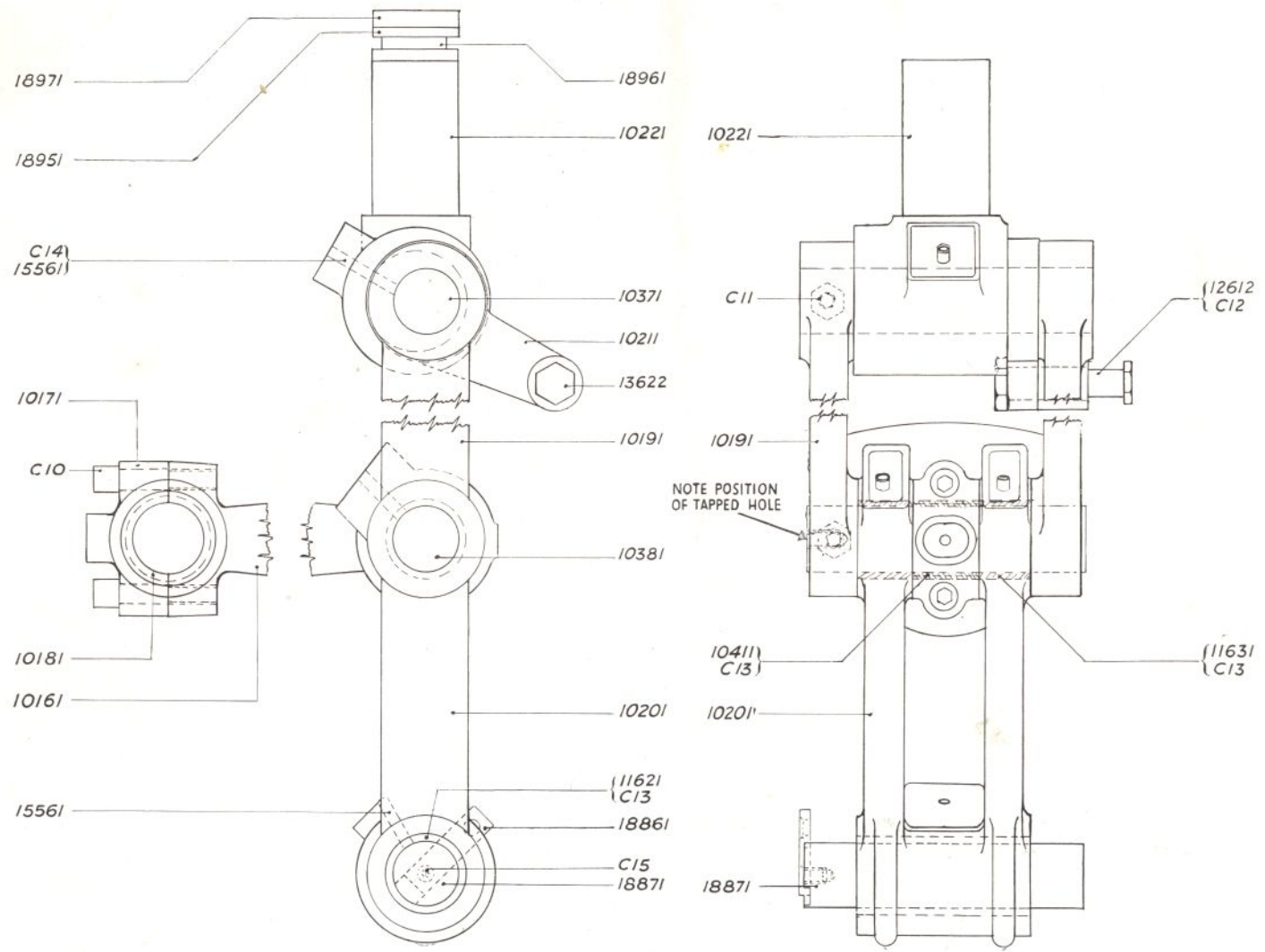
UNIT 'C' TOGGLE LEVER MOTION

| Ref. No. | Qty. | Name | Ref. No. | Qty. | Name |
|----------|-------|-------------------------|----------|------|------------------------|
| 10161 | 1 | Crank Lever. | 11621 | 1 | Bush for 1020. |
| 10171 | 1 | Crank Lever Cap. | 11631 | 2 | Bush for Jaws of 1020. |
| 10181 | 1 pr. | Crank Lever Bush. | 12612 | 1 | Stud for 1260. |
| 10191 | 1 | Back Toggle Lever. | 13622 | 1 | Lock Screw for 1261. |
| 10201 | 1 | Toggle Link. | 15561 | 5 | Oil Feed Wick. |
| 10211 | 1 | Eccentric Check Sleeve. | 18861 | 1 | Plate for 1887. |
| 10221 | 1 | Thrust Bearing. | 18871 | 1 | Pin for 1024. |
| 10371 | 1 | Fulcrum Pin for 1019. | 18951 | 1 | Shear Collar. |
| 10381 | 1 | Pin for 1019-1020. | 18961 | 1 | Shear Punch. |
| 10411 | 1 | Bush for 1016. | 18971 | 1 | Shear Die Ring. |

UNIT 'C' STANDARD PARTS

| Ref. No. | Use with | Qty. | Description | Size | Length | Ref. No. | Use with | Qty. | Description | Size | Length |
|----------|----------|------|-----------------------|-------------------------------------|------------------|----------|----------|------|------------------------|-----------------------|------------------|
| C 10 | 10171 | 2 | Allen Cap Head Screw. | $\frac{1}{8}$ " Whit. | $2\frac{1}{4}$ " | C 13 | 11631 | 2 | Allen Grub Screw. | 2 B.A. | $\frac{1}{2}$ " |
| C 11 | 10191 | 2 | Hex. Head Screw. | $\frac{3}{8}$ " B.S.F. | $1\frac{1}{4}$ " | C 14 | 10161 | 3 | Oil Pipe. | $\frac{1}{4}$ " dia. | $1\frac{1}{2}$ " |
| C 12 | 12612 | 1 | Key Steel. | $\frac{3}{16}$ " x $\frac{3}{16}$ " | $\frac{3}{8}$ " | C 14 | 10201 | 1 | Oil Pipe. | $\frac{1}{4}$ " dia. | $1\frac{1}{2}$ " |
| C 13 | 10411 | 1 | Allen Grub Screw. | 2 B.A. | $\frac{1}{4}$ " | C 14 | 10211 | 1 | Oil Pipe | $\frac{1}{4}$ " dia. | $1\frac{1}{2}$ " |
| C 13 | 11621 | 1 | Allen Grub Screw. | 2 B.A. | $\frac{1}{4}$ " | C 15 | 18861 | 2 | Allen Cone Head Screw. | $\frac{3}{8}$ " Whit. | $\frac{3}{4}$ " |

C



D

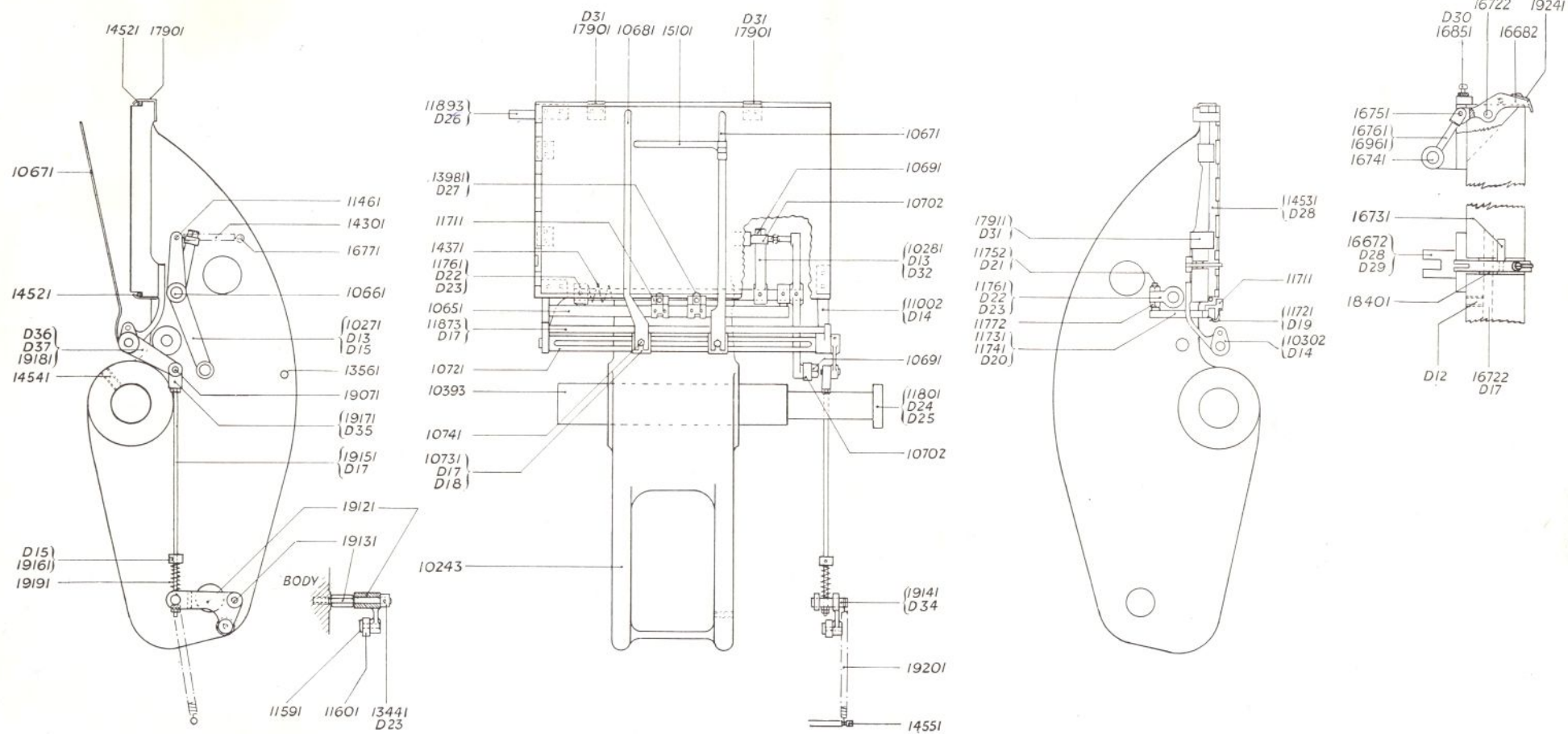
UNIT 'D' FRONT TOGGLE

| Ref. No. | Qty. | Name | Ref. No. | Qty. | Name |
|----------|------|-------------------------------|----------|------|------------------------------|
| 10243 | 1 | Front Toggle. | 14371 | 1 | Spring for 1066. |
| 10271 | 1 | Register Lift Cam Lever. | 14521 | 2 | Blanket Rod. |
| 10281 | 1 | Register Side Cam Lever. | 14531 | 1 | Blanket Plate. |
| 10302 | 1 | Frisket Bearing (R.H.) | 14541 | 2 | Grub Screw for 1024. |
| 10393 | 1 | Toggle Shaft. | 14551 | 1 | Spring Peg for 1431. |
| 10651 | 1 | Register Bar | 15101 | 1 | Cross Frisket. |
| 10661 | 1 | Register Fulcrum Shaft. | 16672 | 1 | Register Side Lay Bracket. |
| 10671 | 1 | Frisket (L.H.) | 16682 | 1 | Register Side Lay. |
| 10681 | 1 | Frisket (R.H.) | 16722 | 1 | Register Lay Fulcrum Pin. |
| 10691 | 2 | Bowl Stud for 1027 and 1028. | 16731 | 1 | Register Trip Pin. |
| 10702 | 2 | Bowl for 1069. | 16741 | 1 | Register Spring Swivel Pin. |
| 10721 | 1 | Frisket Bar. | 16751 | 1 | Register Spring Fulcrum Pin. |
| 10731 | 2 | Frisket End. | 16761 | 1 | Register Spring Centre Pin. |
| 10741 | 2 | Frisket Stud. | 16771 | 1 | Spring Pin for 1024. |
| 11002 | 1 | Frisket Bearing (L.H.) | 16851 | 1 | Register Adjusting Screw. |
| 11461 | 1 | Spring Pin for 1155 and 1027. | 16961 | 1 | Register Side Lay Spring. |
| 11591 | 1 | Bowl Stud for 1155 and 1912. | 17901 | 3 | Blanket Rod Clip (Top) |
| 11601 | 1 | Bowl for 1155 and 1912. | 17911 | 3 | Blanket Rod Clip (Bottom). |
| 11711 | 2 | Register Bar Slide. | 18211 | 3 | Sheet Guide. |
| 11721 | 2 | Spring for 1171. | 18401 | 2 | Washer for 1668. |
| 11731 | 2 | Register Bar Carrier. | 19071 | 1 | Fulcrum Pin. |
| 11741 | 2 | Screw for 1173. | 19121 | 1 | Frisket Cam Lever. |
| 11751 | 2 | Register Adjusting Screw. | 19131 | 1 | Fulcrum Pin for 1912. |
| 11761 | 2 | Register Adjusting Filboes. | 19141 | 1 | Pin for 1912. |
| 11772 | 4 | Nut for 1175. | 19151 | 1 | Frisket Conn. Rod. |
| 11801 | 1 | Collar for 1039. | 19161 | 1 | Collar for 1915. |
| 11873 | 1 | Sheet Guide Bar. | 19171 | 1 | Frisket Lever Link. |
| 11893 | 1 | Delivery Gripper Steady Fork. | 19181 | 1 | Frisket Bar Conn. Lever. |
| 13441 | 1 | Collar for 1343 and 1913. | 19191 | 1 | Spring for 1915. |
| 13561 | 1 | Counter Trip Stud. | 19201 | 1 | Spring for 1912. |
| 13981 | 2 | Pin for 1171. | 19241 | 1 | Clip for 1668. |
| 14301 | 1 | Spring for 1027. | | | |

UNIT 'D' STANDARD PARTS

| Ref. No. | Use with | Qty. | Description | Size | Length | Ref. No. | Use with | Qty. | Description | Size | Length |
|----------|----------|------|--------------------|-------------------------|------------------|----------|----------|------|-----------------------|-------------------------|------------------|
| D 12 | 10243 | 1 | Allen Grub Screw. | 2 B.A. | $\frac{3}{8}$ " | D 23 | 13441 | 1 | Allen Grub Screw. | $\frac{1}{4}$ " B.S.F. | $\frac{1}{4}$ " |
| D 13 | 10271 | 1 | Taper Pin. | No. 1 | $1\frac{1}{2}$ " | D 23 | 11761 | 2 | Allen Grub Screw. | $\frac{1}{4}$ " B.S.F. | $\frac{1}{4}$ " |
| D 13 | 10281 | 1 | Taper Pin. | No. 1 | $1\frac{1}{2}$ " | D 24 | 11801 | 1 | Dowel. | $\frac{1}{16}$ " dia. | $1\frac{1}{2}$ " |
| D 14 | 10302 | 2 | Hex. Head Screw. | $\frac{5}{16}$ " B.S.F. | $\frac{1}{2}$ " | D 25 | 11801 | 1 | Hex. Head Screw. | $\frac{1}{16}$ " Whit. | $1\frac{1}{2}$ " |
| D 14 | 11002 | 2 | Hex. Head Screw. | $\frac{5}{16}$ " B.S.F. | $\frac{1}{2}$ " | D 26 | 11893 | 2 | Allen Cap Head Screw. | $\frac{7}{4}$ " B.S.F. | $\frac{3}{8}$ " |
| D 15 | 10271 | 1 | Allen Grub Screw. | 2 B.A. | $\frac{5}{16}$ " | D 27 | 13981 | 2 | Cone Head Scree. | $\frac{3}{32}$ " Whit. | $\frac{1}{2}$ " |
| D 15 | 19161 | 1 | Allen Grub Screw. | 2 B.A. | $\frac{5}{16}$ " | D 28 | 16672 | 2 | Dowel. | $\frac{1}{8}$ " dia. | $1\frac{1}{2}$ " |
| D 17 | 10731 | 2 | Nut. | $\frac{1}{4}$ " B.S.F. | $\frac{1}{4}$ " | D 28 | 14531 | 2 | Dowel. | $\frac{1}{8}$ " dia. | $1\frac{1}{2}$ " |
| D 17 | 11873 | 1 | Nut. | $\frac{1}{4}$ " B.S.F. | $\frac{1}{4}$ " | D 29 | 16672 | 2 | Allen Cap Head Screw. | 2 B.A. | $\frac{3}{8}$ " |
| D 17 | 16722 | 1 | Nut. | $\frac{1}{4}$ " B.S.F. | $\frac{1}{4}$ " | D 30 | 16851 | 1 | Nut. | 2 B.A. | $\frac{3}{8}$ " |
| D 17 | 19151 | 3 | Nut. | $\frac{1}{4}$ " B.S.F. | $\frac{1}{4}$ " | D 31 | 17901 | 6 | Cheese Head Screw. | 2 B.A. | $\frac{3}{8}$ " |
| D 18 | 10731 | 2 | Washer. | $\frac{1}{4}$ " dia. | $\frac{1}{4}$ " | D 31 | 17911 | 6 | Cheese Head Screw. | 2 B.A. | $\frac{3}{8}$ " |
| D 19 | 11721 | 4 | Button Head Screw. | $\frac{5}{32}$ " Whit. | $1\frac{1}{4}$ " | D 32 | 10281 | 1 | Allen Grub Screw. | $\frac{5}{16}$ " B.S.F. | $\frac{3}{8}$ " |
| D 19 | 19241 | 1 | Button Head Screw. | $\frac{5}{32}$ " Whit. | $1\frac{1}{4}$ " | D 34 | 19141 | 2 | Split Pin. | $\frac{3}{32}$ " dia | $1\frac{1}{2}$ " |
| D 20 | 11731 | 2 | Grub Screw. | $\frac{5}{32}$ " Whit. | $\frac{5}{16}$ " | D 35 | 19171 | 1 | Taper Pin. | No. 0000 | $\frac{1}{2}$ " |
| D 21 | 11752 | 2 | Split Pin. | $\frac{3}{32}$ " dia. | $\frac{5}{16}$ " | D 36 | 19181 | 1 | Taper Pin. | No. 0 | $1\frac{1}{2}$ " |
| D 22 | 11761 | 2 | Taper Pin. | No. 1 | $1\frac{3}{8}$ " | D 37 | 19181 | 1 | Allen Grubscrew | 2 B.A. | $\frac{1}{2}$ " |

D



E

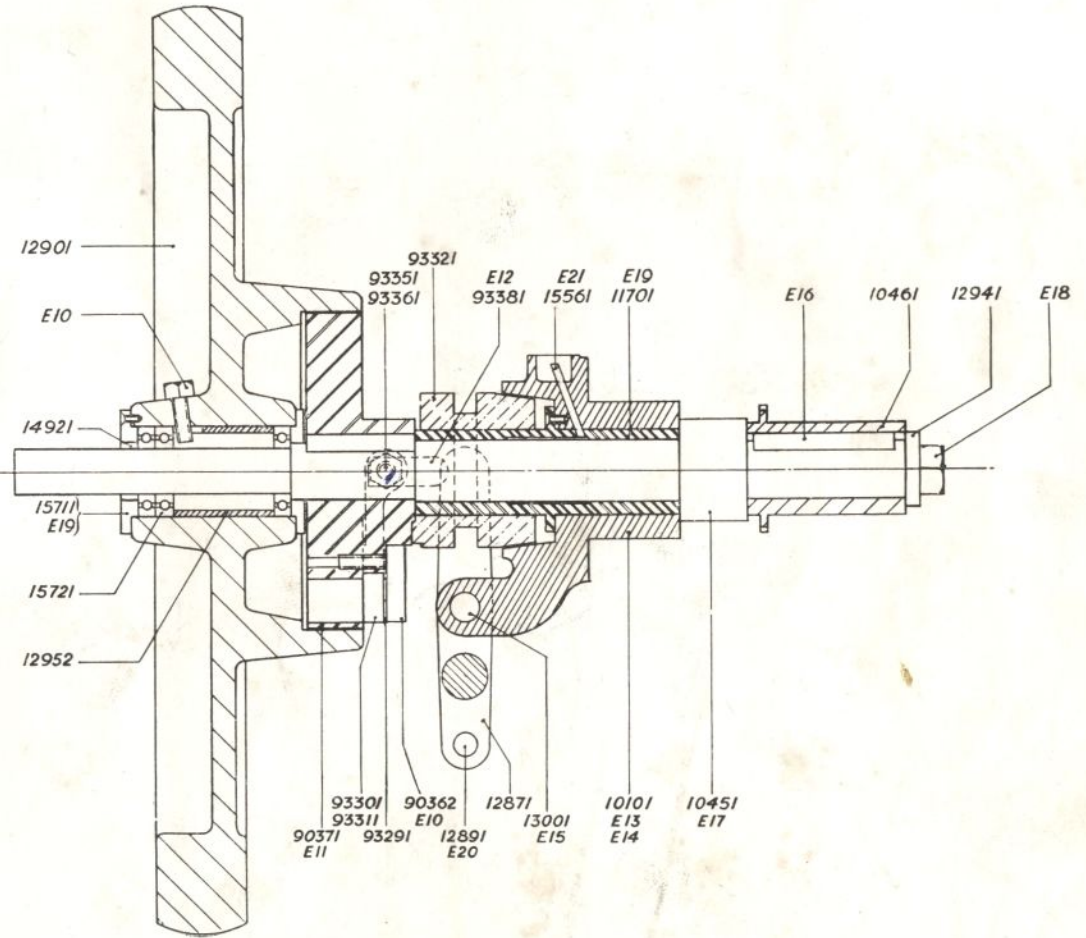
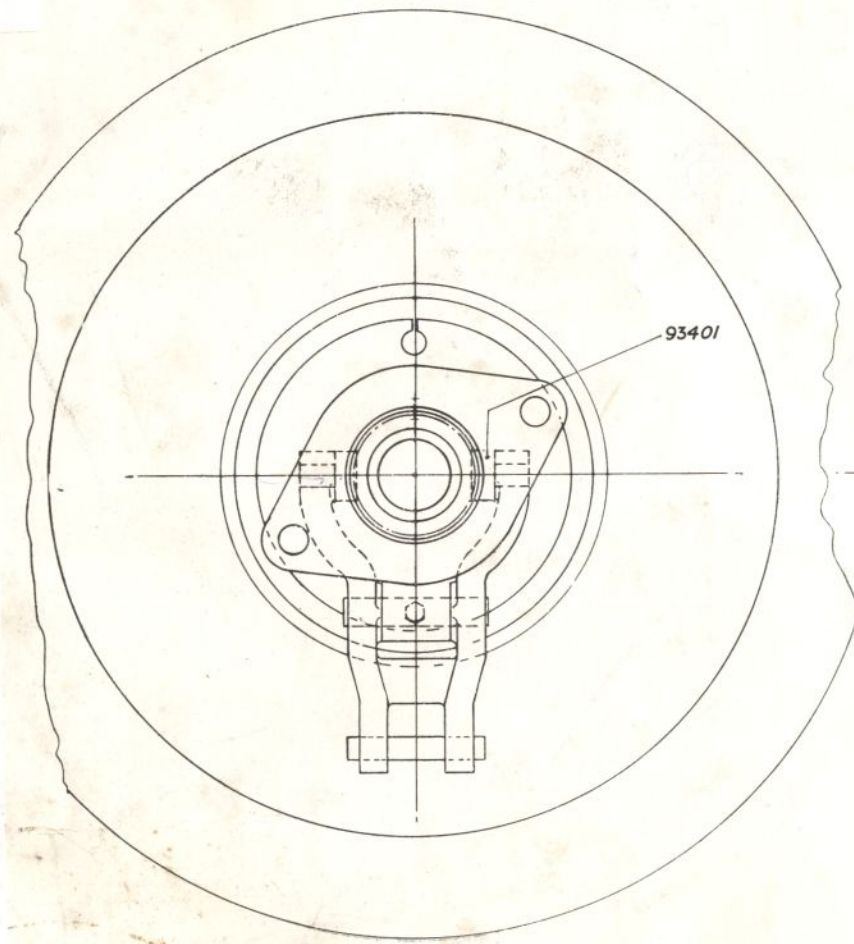
UNIT 'E' FLYWHEEL SHAFT

| Ref. No. | Qty. | Name | Ref. No. | Qty. | Name |
|----------|------|-----------------------------------|----------|------|-----------------------------|
| 90362 | 1 | Clutch Cover. | 11701 | 1 | Bush for 1010. |
| 90371 | 1 | Clutch Cover Expansion Ring. | 12871 | 1 | Clutch Toggle Fork. |
| 93291 | 1 | Distance Piece for Clutch Levers. | 12891 | 1 | Pin for 1287. |
| 93301 | 1 | Clutch Lever (L.H.) | 12901 | 1 | Flywheel. |
| 93311 | 1 | Clutch Lever (R.H.) | 12941 | 1 | Clamping Collar for 1045. |
| 93321 | 1 | Brake Cone. | 12952 | 1 | Distance Bush for Flywheel. |
| 93351 | 2 | Adjusting Screw for Clutch Lever. | 13001 | 1 | Pin for 1010. |
| 93361 | 2 | Adjusting Nut for Clutch Lever. | 14921 | 1 | Bush for 1483. |
| 93381 | 2 | Pressure Piece for 9332. | 15561 | 1 | Oil Feed Wick. |
| 93401 | 2 | Guide Pin for Clutch. | 15711 | 2 | End Plate for Flywheel. |
| 10101 | 1 | Flywheel Shaft Bearing. | 15721 | 3 | Ballrace for Flywheel. |
| 10451 | 1 | Flywheel Shaft. | 18231 | 1 | Bolt for 1010. |
| 10461 | 1 | Chain Pinion for 1045. | | | |

UNIT 'E' STANDARD PARTS

| Ref. No. | Use with | Qty. | Description | Size | Length | Ref. No. | Use with | Qty. | Description | Size | Length |
|----------|----------|------|------------------------|------------------------------------|-------------------|----------|----------|------|-----------------------|-----------------------------------|-------------------|
| E 10 | 12901 | 1 | Hex. Head Screw. | $\frac{5}{16}$ " B.S.F. | 1" | E 17 | 10451 | 1 | Key Steel. | $\frac{3}{8}$ " x $\frac{3}{8}$ " | 2 $\frac{1}{4}$ " |
| E 11 | 90371 | 1 | Hex. Head Screw. | $\frac{7}{16}$ " B.S.F. | 1" | E 18 | 10451 | 1 | Hex. Head Screw. | $\frac{7}{16}$ " Whit. | 1" |
| E 12 | 93381 | 2 | Allen Cone Head Screw. | $\frac{11}{16}$ " B.S.F. | $3\frac{1}{2}$ " | E 19 | 11701 | 2 | Cone Head Screw. | 2 B.A. | $1\frac{1}{2}$ " |
| E 13 | 10101 | 1 | Hex. Head Bolt. | Whit. | 4 $\frac{1}{2}$ " | E 19 | 15711 | 8 | Cone Head Screw. | 2 B.A. | $1\frac{1}{2}$ " |
| E 14 | 10101 | 2 | Dowel. | dia. | 1 $\frac{1}{4}$ " | E 20 | 12891 | 2 | Split Pin. | $\frac{1}{8}$ " dia. | 1" |
| E 15 | 10101 | 1 | Allen Grub Screw. | $\frac{11}{16}$ " B.S.F. | $1\frac{1}{2}$ " | E 21 | 10101 | 1 | Oil Pipe. | $\frac{1}{4}$ " dia. | 1 $\frac{1}{2}$ " |
| E 16 | 10451 | 1 | Key Steel. | $\frac{5}{16}$ " x $\frac{3}{8}$ " | 1" | E 22 | 90362 | 1 | Allen Cap Head Screw. | $\frac{5}{16}$ " B.S.F. | 1" |

E



F

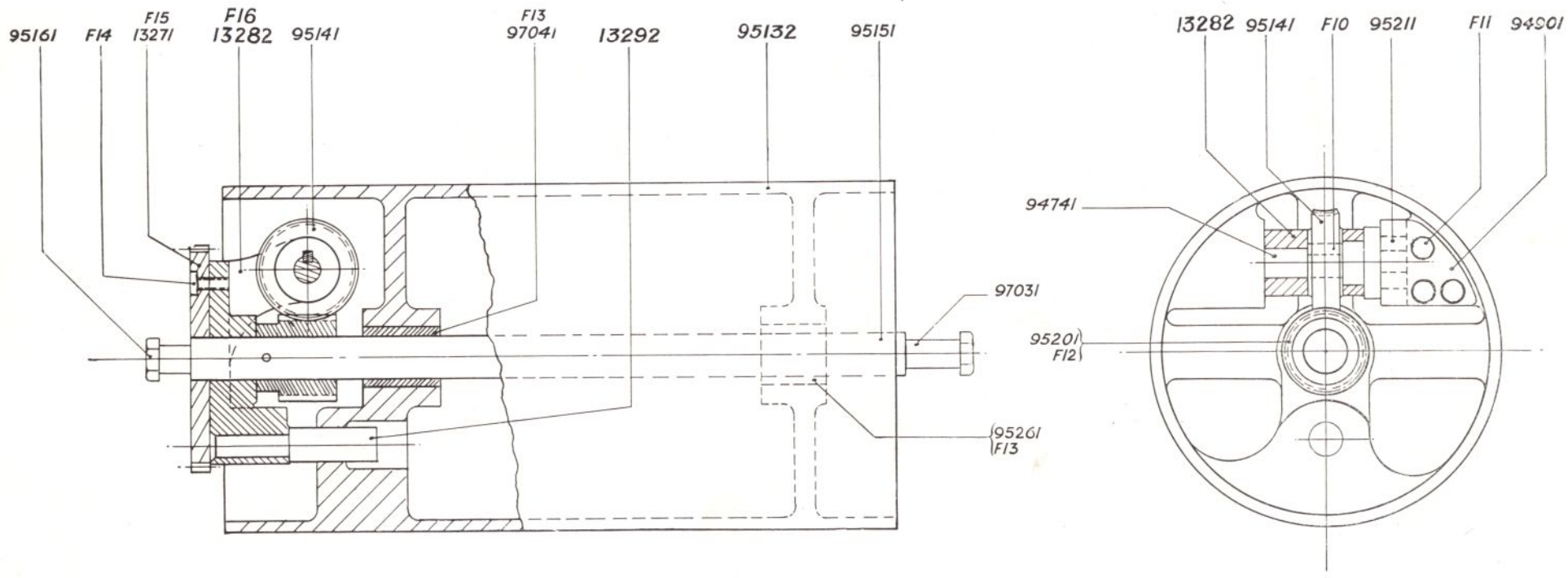
UNIT 'F' INK DRUM

| Ref. No. | Qty. | Name | Ref. No. | Qty. | Name |
|----------|------|---------------------------------|----------|------|-------------------------------|
| 94741 | 1 | Eccentric Spindle for Ink Drum. | 95211 | 1 | Square Nut for Ink Drum. |
| 94901 | 1 | Retaining Piece for 9521. | 95261 | 1 | Bush for Ink Drum. |
| 95132 | 1 | Ink Drum. | 97031 | 1 | Ink Drum Spindle Stud (Long). |
| 95141 | 1 | Wormwheel for 9513. | 97041 | 1 | Bush for Ink Drum. |
| 95151 | 1 | Ink Drum Spindle. | 13271 | 1 | Driving Wheel for Ink Drum. |
| 95161 | 1 | Ink Drum Spindle Stud (Short). | 13282 | 1 | Driving Wheel Carrier. |
| 95201 | 1 | Worm for 9513. | 13292 | 1 | Stud for 1328. |

UNIT 'F' STANDARD PARTS

| Ref. No. | Use with | Qty. | Description | Size | Length | Ref. No. | Use with | Qty. | Description | Size | Length |
|----------|----------|------|-----------------------|--------------------------------------|-----------------|----------|----------|------|-----------------------|-------------------------|------------------|
| F 10 | 94741 | 1 | Key Steel. | $\frac{1}{4}'' \times \frac{1}{4}''$ | $\frac{3}{4}''$ | F 13 | 97041 | 1 | Allen Grub Screw. | 2 B.A. | $\frac{1}{16}''$ |
| F 11 | 94901 | 3 | Allen Cap Head Screw. | $\frac{5}{16}''$ B.S.F. | 1" | F 14 | 13271 | 3 | Allen Cap Head Screw. | $\frac{5}{16}''$ B.S.F. | $\frac{1}{16}''$ |
| F 12 | 95201 | 1 | Taper Pin. | No. 4 | 2" | F 15 | 13271 | 2 | Dowel. | $\frac{5}{16}''$ dia. | $\frac{1}{16}''$ |
| F 13 | 95261 | 1 | Allen Grub Screw. | 2 B.A. | $\frac{1}{2}''$ | F 16 | 13282 | 1 | Allen Grub Screw | $\frac{5}{16}''$ B.S.F. | $\frac{1}{4}''$ |

F



G

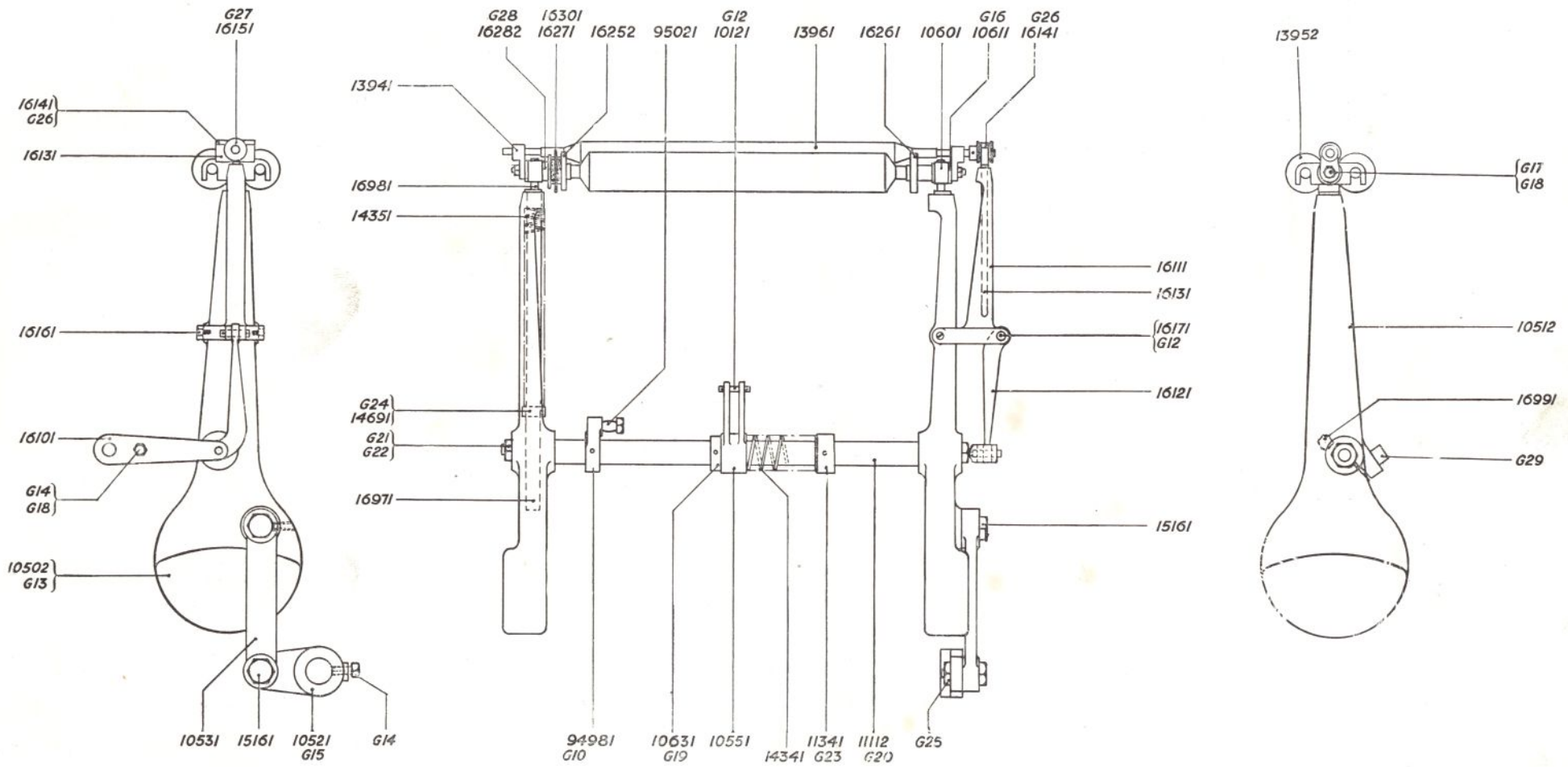
UNIT 'G' ROLLER ARMS

| Ref. No. | Qty. | Name | Ref. No. | Qty. | Name |
|----------|------|--|----------|------|--------------------------------|
| 94981 | 1 | Crank for Reciprocating Disser Roller. | 15161 | 2 | Roller Arm Stud. |
| 95021 | 1 | Stud for 9498. | 16101 | 1 | Rider Bracket. |
| 10121 | 1 | Pin for 1055. | 16111 | 1 | Rider Lever. |
| 10502 | 1 | Roller Arm (L.H.) | 16121 | 1 | Rider Lever Link. |
| 10512 | 1 | Roller Arm (R.H.) | 16131 | 1 | Rider Lever Spindle. |
| 10521 | 1 | Roller Arm Crank. | 16141 | 1 | Cap for 1613. |
| 10531 | 1 | Roller Arm Lever. | 16151 | 1 | Bobbin for 1396. |
| 10551 | 1 | Vibrator Actuating Lever. | 16161 | 2 | Stud for 1611. |
| 10601 | 2 | Roller Saddle. | 16171 | 2 | Pin for 1610 and 1611. |
| 10611 | 2 | Roller Saddle Stud. | 16252 | 2 | Inking Roller Runner (R.H.) |
| 10631 | 1 | Taper Collar for 1055. | 16261 | 2 | Inking Roller Runner (L.H.) |
| 11112 | 1 | Roller Arm Shaft. | 16271 | 2 | Inking Roller Clutch Sprocket. |
| 11341 | 1 | Collar for 1111. | 16282 | 2 | End Cap for 1625. |
| 13941 | 2 | Rider Roller End Plate. | 16301 | 2 | Roller Arm Spring. |
| 13952 | 2 | Inking Roller. | 16971 | 2 | Roller Arm Spindle. |
| 13961 | 1 | Inking Roller Rider. | 16981 | 2 | Roller Arm Spindle End. |
| 14341 | 1 | Spring for Roller Arm Shaft. | 16991 | 2 | Roller Arm Spindle Stud. |
| 14351 | 2 | Spring for Roller Arm. | 18771 | 1 | Sprocket Cover. |
| 14691 | 2 | Collar for 1697. | | | |

UNIT 'G' STANDARD PARTS

| Ref. No. | Use with | Qty. | Description | Size | Length | Ref. No. | Use with | Qty. | Description | Size | Length |
|----------|----------|------|-------------------|-------------|--------|----------|----------|------|-----------------------|---------------|--------|
| G 10 | 94981 | 1 | Taper Pin. | No. 4 | 2 1/2" | G 19 | 10631 | 1 | Taper Pin. | No. 4 | 2" |
| G 12 | 10121 | 2 | Split Pin. | 3/32" dia. | 3 3/2" | G 20 | 11112 | 2 | Key Steel. | 5/16" x 5/16" | 2" |
| G 12 | 16171 | 4 | Split Pin. | 3/32" dia. | 3 3/4" | G 21 | 11112 | 2 | Nut. | 5/16" Whit. | |
| G 13 | 10502 | 1 | Allen Grub Screw. | 1/8" B.S.F. | 1" | G 22 | 11112 | 2 | Washer. | 5/16" dia. | |
| G 14 | 10521 | 1 | Hex. Head Screw. | 1/8" B.S.F. | 1" | G 23 | 11341 | 1 | Allen Grub Screw. | 1/8" B.S.F. | 1 1/2" |
| G 14 | 16101 | 1 | Hex. Head Screw. | 1/8" B.S.F. | 1" | G 24 | 14691 | 2 | Hex. Head Screw. | 1/8" B.S.F. | 1 1/4" |
| G 15 | 10521 | 1 | Taper Pin. | No. 6 | 3" | G 25 | 15161 | 1 | Locknut. | 1/8" Whit. | |
| G 16 | 10611 | 4 | Cone Head Screw. | 4 B.A. | 5/16" | G 26 | 16141 | 2 | Cone Head Screw. | 7/32" Whit. | 5/8" |
| G 17 | 10611 | 1 | Nut. | 1/8" B.S.F. | | G 27 | 16151 | 1 | Taper Pin. | No. 1 | 1" |
| G 18 | 10611 | 1 | Washer. | 1/8" dia. | | G 28 | 16282 | 2 | Cone Head Screw. | 1/8" Whit. | 1 1/4" |
| G 18 | 16101 | 1 | Washer. | 1/8" dia. | | G 29 | 10512 | 1 | Allen Cap Head Screw. | 1/8" Whit. | 1 3/4" |

G



H

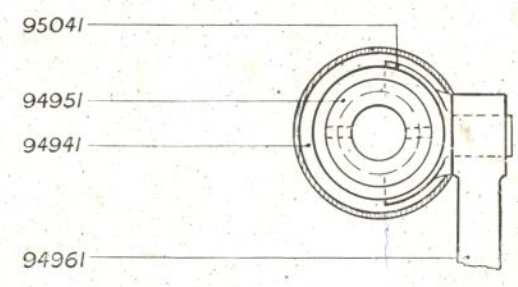
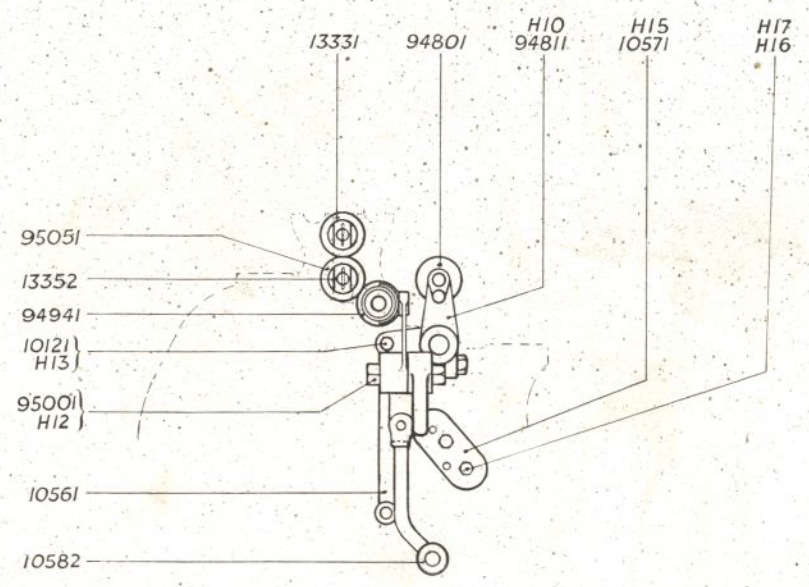
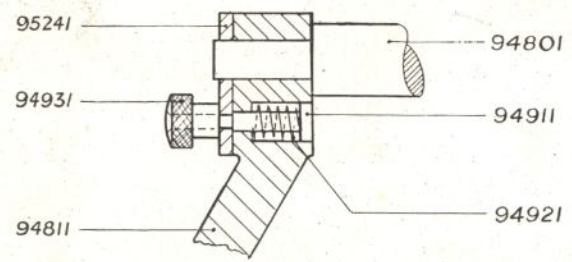
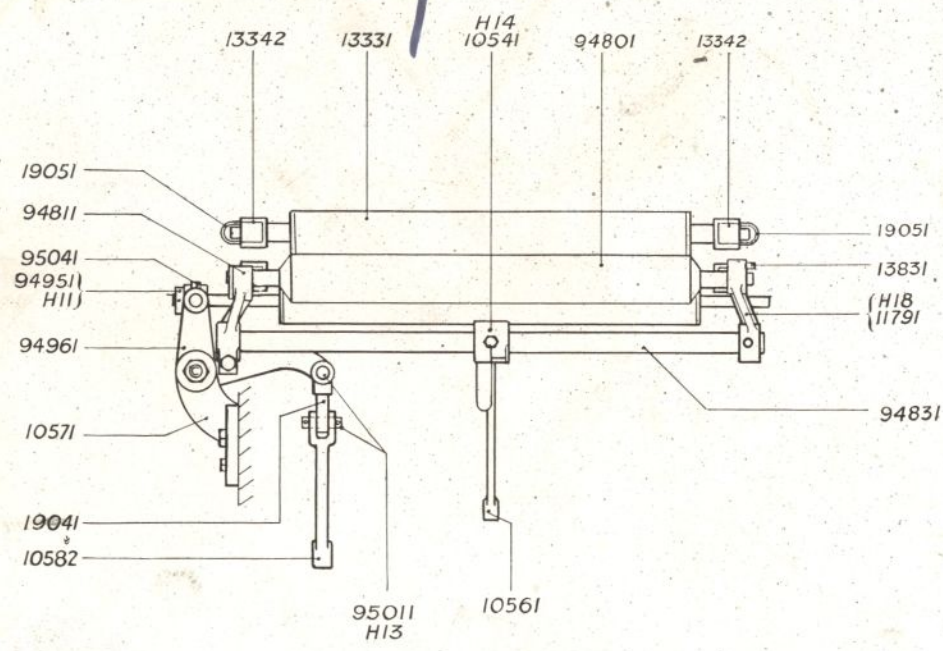
UNIT 'H' INK DISTRIBUTION

| Ref. No. | Qty. | Name | Ref. No. | Qty. | Name |
|----------|------|-------------------------------|----------|------|----------------------------|
| 94801 | 1 | Vibrator Roller Stock. | 95241 | 1 | Plate for 9491. |
| 94811 | 1 | Vibrator Crank (R.H.) | 10121 | 1 | Pin for 1054. |
| 94831 | 1 | Rocking Spindle for Vibrator. | 10541 | 1 | Vibrator Checking Lever. |
| 94911 | 1 | Plunger for 9481. | 10561 | 1 | Vibrator Connecting Lever. |
| 94921 | 1 | Spring for 9491. | 10571 | 1 | Disser Bellcrank Bracket. |
| 94931 | 1 | Plunger Head for 9481. | 10582 | 1 | Disser Connecting Lever. |
| 94941 | 1 | Reciprocating Disser Roller. | 11791 | 1 | Vibrator Crank (L.H.) |
| 94951 | 1 | Bobbin for 9494. | 13331 | 1 | Steel Disser Roller. |
| 94961 | 1 | Bellcrank for 9494. | 13342 | 2 | End for Steel Disser. |
| 95001 | 1 | Stud for 1057. | 13352 | 2 | End for Compo Disser. |
| 95011 | 2 | Pin for 9496. | 13831 | 1 | Guide Screw for 1380. |
| 95041 | 1 | Crescent for 9496. | 19041 | 1 | Extension for 1058. |
| 95051 | 1 | Disser Roller Stock. | 19051 | 4 | Loop for 1334 and 1335. |

UNIT 'H' STANDARD PARTS

| Ref. No. | Use with | Qty. | Description | Size | Length | Ref. No. | Use with | Qty. | Description | Size | Length |
|----------|----------|------|------------------|------------------------|------------------|----------|----------|------|-------------------|-------------------------|------------------|
| H 10 | 94811 | 1 | Hex. Head Screw. | $\frac{3}{8}$ " B.S.F. | $1\frac{1}{4}$ " | H 14 | 10541 | 1 | Allen Grub Screw. | $\frac{5}{16}$ " B.S.F. | $\frac{1}{2}$ " |
| H 11 | 94951 | 1 | Taper Pin. | No. 0 | $1\frac{1}{4}$ " | H 15 | 10571 | 2 | Dowel. | $\frac{3}{16}$ " dia. | $1\frac{1}{2}$ " |
| H 12 | 95001 | 1 | Nut. | $\frac{1}{2}$ " Whit. | | H 16 | 10571 | 2 | Hex. Head Screw. | $\frac{3}{8}$ " B.S.F. | 1" |
| H 13 | 95011 | 4 | Split Pin. | $\frac{3}{32}$ " dia. | $\frac{3}{4}$ " | H 17 | 10571 | 2 | Washer. | $\frac{3}{8}$ " dia. | |
| H 13 | 10121 | 2 | Split Pin. | $\frac{3}{32}$ " dia. | $\frac{3}{4}$ " | H 18 | 11791 | 1 | Allen Grub Screw. | $\frac{5}{16}$ " B.S.F. | $\frac{3}{8}$ " |

H



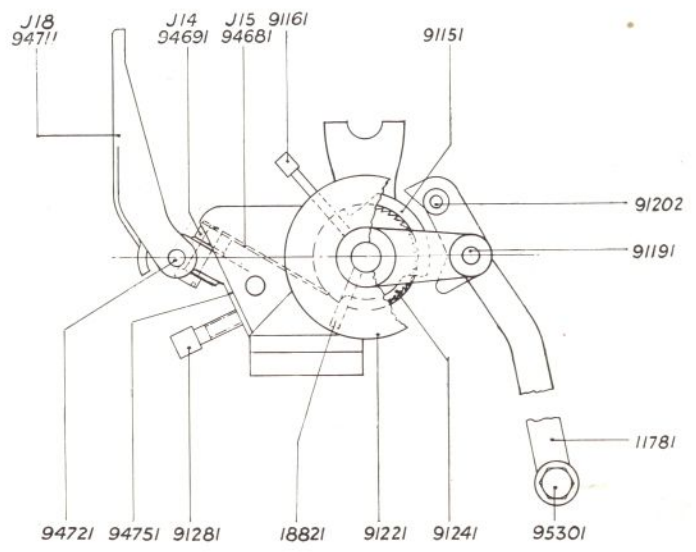
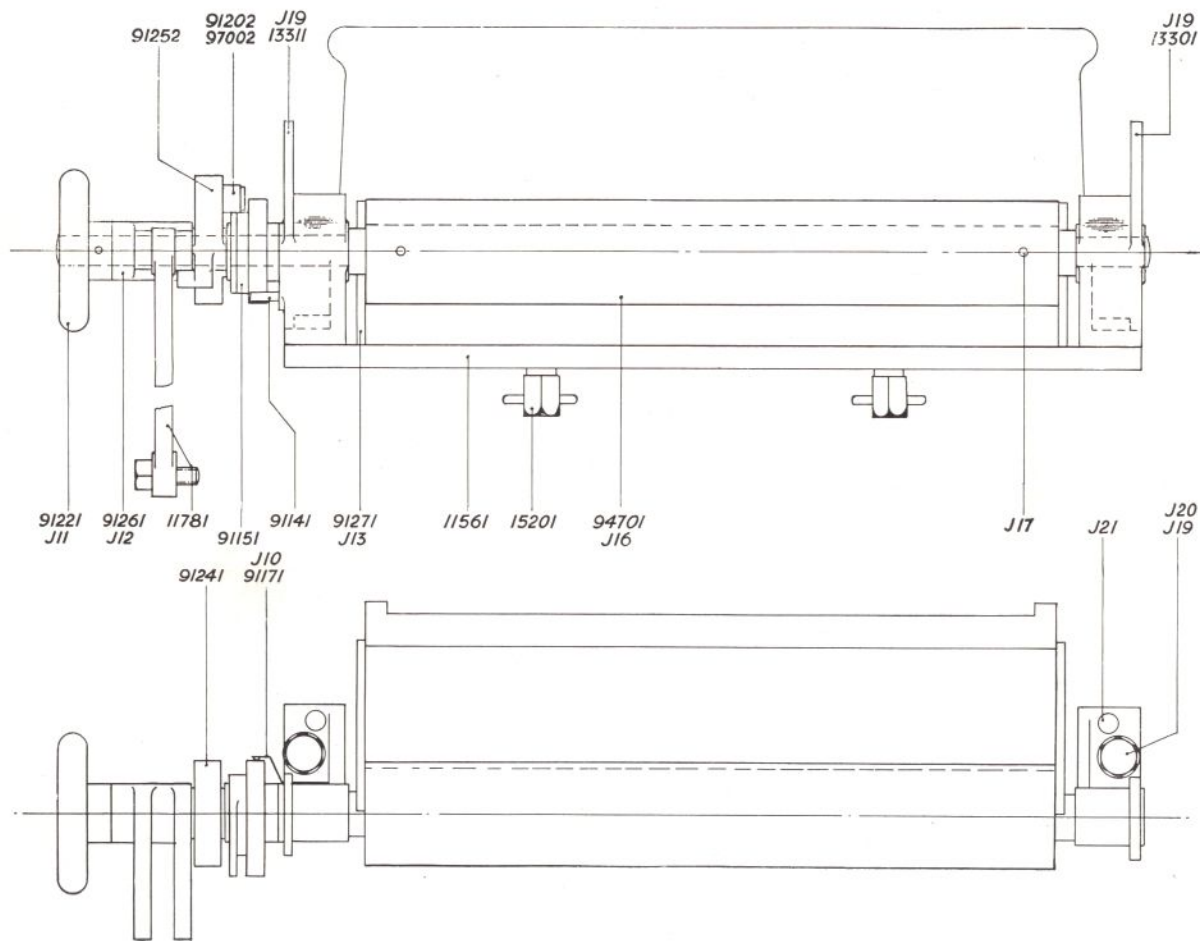
J

UNIT 'J' INK DUCT

| Ref. No. | Qty. | Name | Ref. No. | Qty. | Name |
|----------|------|------------------------------|----------|------|----------------------------|
| 91141 | 1 | Check Pin for 9115. | 94691 | 1 | Ink Knife Strip. |
| 91151 | 1 | Duct Cam. | 94701 | 1 | Ink Duct Roller. |
| 91161 | 1 | Handle for 9115. | 94711 | 1 | Duct Cover. |
| 91171 | 1 | Controlling Spring for 9115. | 94721 | 2 | Duct Cover Stud. |
| 91191 | 1 | Stud for 9126. | 94751 | 1 | Knife Holder. |
| 91202 | 1 | Lifting Pin for 9125. | 95301 | 1 | Stud for 1178 (Bottom). |
| 91221 | 1 | Duct Handwheel. | 97002 | 1 | Lifting Bowl for 9125. |
| 91241 | 1 | Ratchet Wheel. | 11561 | 1 | Duct Support Bracket. |
| 91252 | 1 | Ink Duct Pawl. | 11781 | 1 | Duct Connecting Lever. |
| 91261 | 1 | Duct Operating Fork. | 13301 | 1 | Duct Roller Bracket (R.H.) |
| 91271 | 2 | Knife End. | 13311 | 1 | Duct Roller Bracket (L.H.) |
| 91281 | 12 | Ink Knife Screw. | 15201 | 2 | Retaining Screw for 9475. |
| 94681 | 1 | Ink Knife. | 18821 | 1 | Screw for Duct Cam. |

UNIT 'J' STANDARD PARTS

| Ref. No. | Use with | Qty. | Description | Size | Length | Ref. No. | Use with | Qty. | Description | Size | Length |
|----------|----------|------|--------------------|-----------------------------------|------------------|----------|----------|------|-----------------------|-------------------------|------------------|
| J 10 | 91171 | 2 | Button Head Screw. | 2 B.A. | $\frac{1}{8}$ " | J 18 | 94711 | 2 | Split Pin. | $\frac{3}{32}$ " dia. | $1\frac{1}{4}$ " |
| J 11 | 91221 | 1 | Allen Grub Screw. | $\frac{5}{16}$ " B.S.F. | $\frac{1}{2}$ " | J 19 | 13301 | 1 | Hex. Head Screw. | $\frac{3}{32}$ " B.S.F. | $1\frac{1}{4}$ " |
| J 12 | 91261 | 1 | Split Pin. | $\frac{1}{8}$ " dia. | $1\frac{1}{2}$ " | J 19 | 13311 | 1 | Hex. Head Screw. | $\frac{1}{8}$ " B.S.F. | $1\frac{1}{2}$ " |
| J 13 | 91271 | 6 | Hex. Head Screw. | $\frac{1}{4}$ " B.S.F. | $\frac{1}{4}$ " | J 20 | 13301 | 1 | Washer. | $\frac{3}{32}$ " dia. | |
| J 14 | 94691 | 4 | Cheese Head Screw. | $\frac{1}{4}$ " B.S.F. | $\frac{1}{4}$ " | J 20 | 13311 | 1 | Washer. | $\frac{1}{8}$ " dia. | |
| J 15 | 94691 | 6 | Rivet. | $\frac{1}{8}$ " dia. | $\frac{7}{16}$ " | J 21 | 13301 | 2 | Allen Cap Head Screw. | $\frac{1}{4}$ " B.S.F. | $\frac{1}{2}$ " |
| J 16 | 94701 | 1 | Key Steel. | $\frac{1}{4}$ " x $\frac{1}{4}$ " | $\frac{1}{4}$ " | J 21 | 13311 | 2 | Allen Cap Head Screw. | $\frac{1}{4}$ " B.S.F. | $\frac{1}{2}$ " |
| J 17 | 94701 | 2 | Taper Pin. | No. 4 | 3" | | | | | | |



K

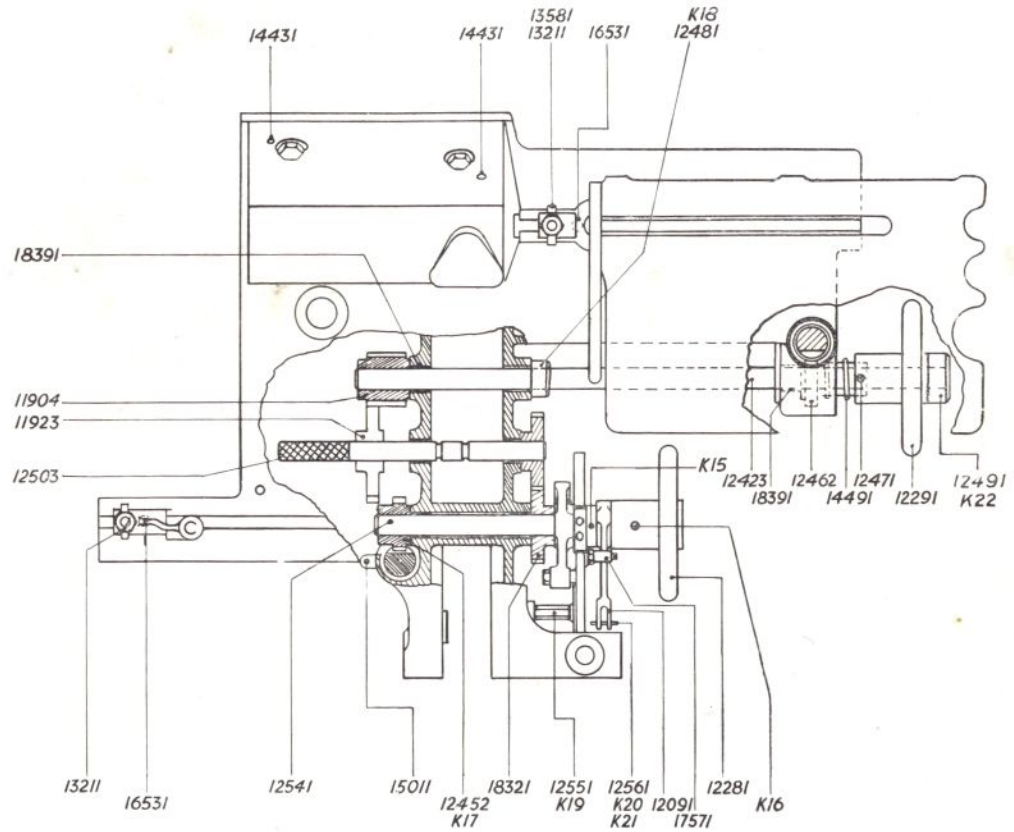
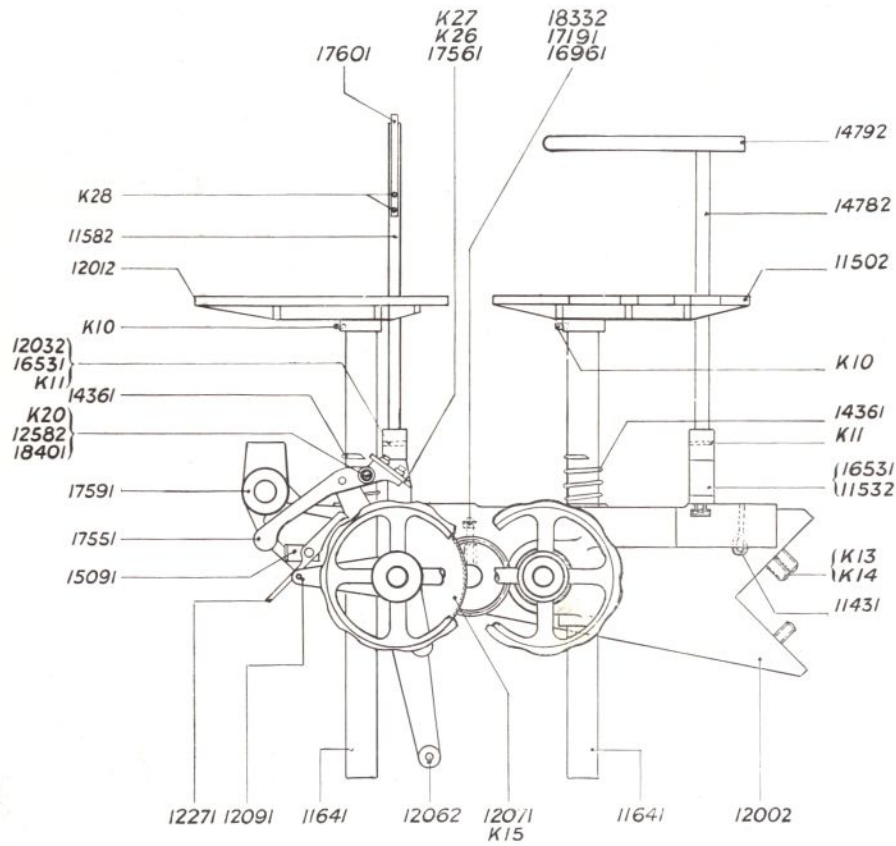
UNIT 'K' FEED BRACKET

| Ref. No. | Qty. | Name | Ref. No. | Qty. | Name |
|----------|------|---------------------------------------|----------|------|-------------------------------|
| 11431 | 1 | Hook for 1147. | 12551 | 1 | Stud for 1207. |
| 11502 | 1 | Delivery Table. | 12561 | 1 | Pin for 1209. |
| 11532 | 1 | Delivery Pile Guide Bracket. | 12582 | 1 | Screw for 1755. |
| 11582 | 1 | Pillar for 1203. | 13211 | 2 | Pile Guide Screw. |
| 11641 | 2 | Table Pillars. | 13581 | 2 | Locking Nut for 1153-1203. |
| 11904 | 1 | Transmission Pinion 16T (Feed). | 14361 | 2 | Spring for 1180-1201. |
| 11923 | 1 | Intermediate Gear 32T (Feed). | 14431 | 2 | Dowel for 1200. |
| 12002 | 1 | Feed Bracket. | 14491 | 1 | Spring for 1229. |
| 12012 | 1 | Feed Table. | 14782 | 1 | Upright Tube for 1153. |
| 12032 | 1 | Feed Pile Guide Bracket. | 14792 | 1 | Tube for 1478. |
| 12062 | 1 | Pile Height Bellcrank. | 15011 | 1 | Index Rod Support. |
| 12071 | 1 | Pile Height Ratchet. | 15091 | 1 | Pawl Rest. |
| 12091 | 1 | Feeler Bar Lifting Bellcrank. | 16531 | 2 | Stud for 1153-1203. |
| 12271 | 1 | Pile Ratchet Catch. | 16961 | 1 | Spring for 1833. |
| 12281 | 1 | Adjusting Handwheel (Feed Table). | 17191 | 1 | Ball Bearing for 1833. |
| 12291 | 1 | Adjusting Handwheel (Delivery Table). | 17551 | 1 | Pile Height Pawl. |
| 12423 | 1 | Delivery Coupling Shaft. | 17561 | 1 | Plate for 1755. |
| 12452 | 1 | Feed Coupling Pinion 16T. | 17571 | 1 | Bowl for 1258. |
| 12462 | 1 | Delivery Coupling Pinion 17T. | 17591 | 1 | Stud for Pile Motion. |
| 12471 | 1 | Screw for 1229. | 17601 | 1 | Feeler Spring. |
| 12481 | 1 | Collar for 1242. | 18321 | 2 | Feed Transmission Pinion. |
| 12491 | 1 | Ratchet Collar for 1242. | 18332 | 1 | Plunger Stud for 1200. |
| 12503 | 1 | Pin for 1192. | 18391 | 6 | Reservoir Bearing No. 141614. |
| 12541 | 1 | Pile Height Ratchet Shaft. | 18401 | 1 | Washer. |

UNIT 'K' STANDARD PARTS

| Ref. No. | Use with | Qty. | Description | Size | Length | Ref. No. | Use with | Qty. | Description | Size | Length |
|----------|----------|------|--------------------|-------------------------|-----------------|----------|----------|------|-----------------------|-------------------------|-----------------|
| K 10 | 11502 | 1 | Allen Grub Screw. | $\frac{1}{4}$ " B.S.F. | $\frac{1}{2}$ " | K 18 | 12481 | 1 | Allen Grub Screw. | $\frac{5}{16}$ " B.S.F. | $\frac{1}{2}$ " |
| K 10 | 12012 | 1 | Allen Grub Screw. | $\frac{1}{4}$ " B.S.F. | $\frac{1}{2}$ " | K 19 | 12551 | 1 | Split Pin. | $\frac{3}{32}$ " dia. | $\frac{1}{2}$ " |
| K 11 | 11532 | 1 | Taper Pin. | No. 0000 | $\frac{1}{2}$ " | K 20 | 12561 | 2 | Split Pin. | $\frac{1}{16}$ " dia. | $\frac{1}{2}$ " |
| K 11 | 12032 | 1 | Taper Pin. | No. 0000 | $\frac{1}{2}$ " | K 20 | 12582 | 1 | Split Pin. | $\frac{1}{16}$ " dia. | $\frac{1}{2}$ " |
| K 12 | 11582 | 1 | Button Head Screw. | 2 B.A. | $\frac{1}{2}$ " | K 21 | 12561 | 2 | Washer. | $\frac{1}{4}$ " dia. | $\frac{1}{2}$ " |
| K 13 | 12002 | 3 | Hex. Head Screw. | $\frac{1}{2}$ " Whit. | $\frac{1}{2}$ " | K 22 | 12491 | 1 | Allen Grub Screw. | $\frac{3}{16}$ " B.S.F. | $\frac{1}{2}$ " |
| K 14 | 12002 | 3 | Washer. | $\frac{1}{2}$ " dia. | $\frac{1}{2}$ " | K 26 | 17561 | 2 | Allen Cap Head Screw. | 2 B.A. | $\frac{1}{2}$ " |
| K 15 | 12071 | 1 | Allen Grub Screw. | $\frac{1}{4}$ " B.S.F. | $\frac{1}{2}$ " | K 27 | 17561 | 2 | Washer. | $\frac{3}{16}$ " dia. | $\frac{1}{2}$ " |
| K 16 | 12281 | 1 | Allen Grub Screw. | $\frac{5}{16}$ " B.S.F. | $\frac{1}{2}$ " | K 28 | 17601 | 2 | Rivet (Parker Kalon). | $\frac{1}{8}$ " dia. | $\frac{1}{2}$ " |
| K 17 | 12452 | 1 | Allen Grub Screw. | $\frac{5}{16}$ " B.S.F. | $\frac{1}{2}$ " | K 29 | 18332 | 1 | Locknut. | $\frac{5}{16}$ " B.S.F. | $\frac{1}{2}$ " |

K



L

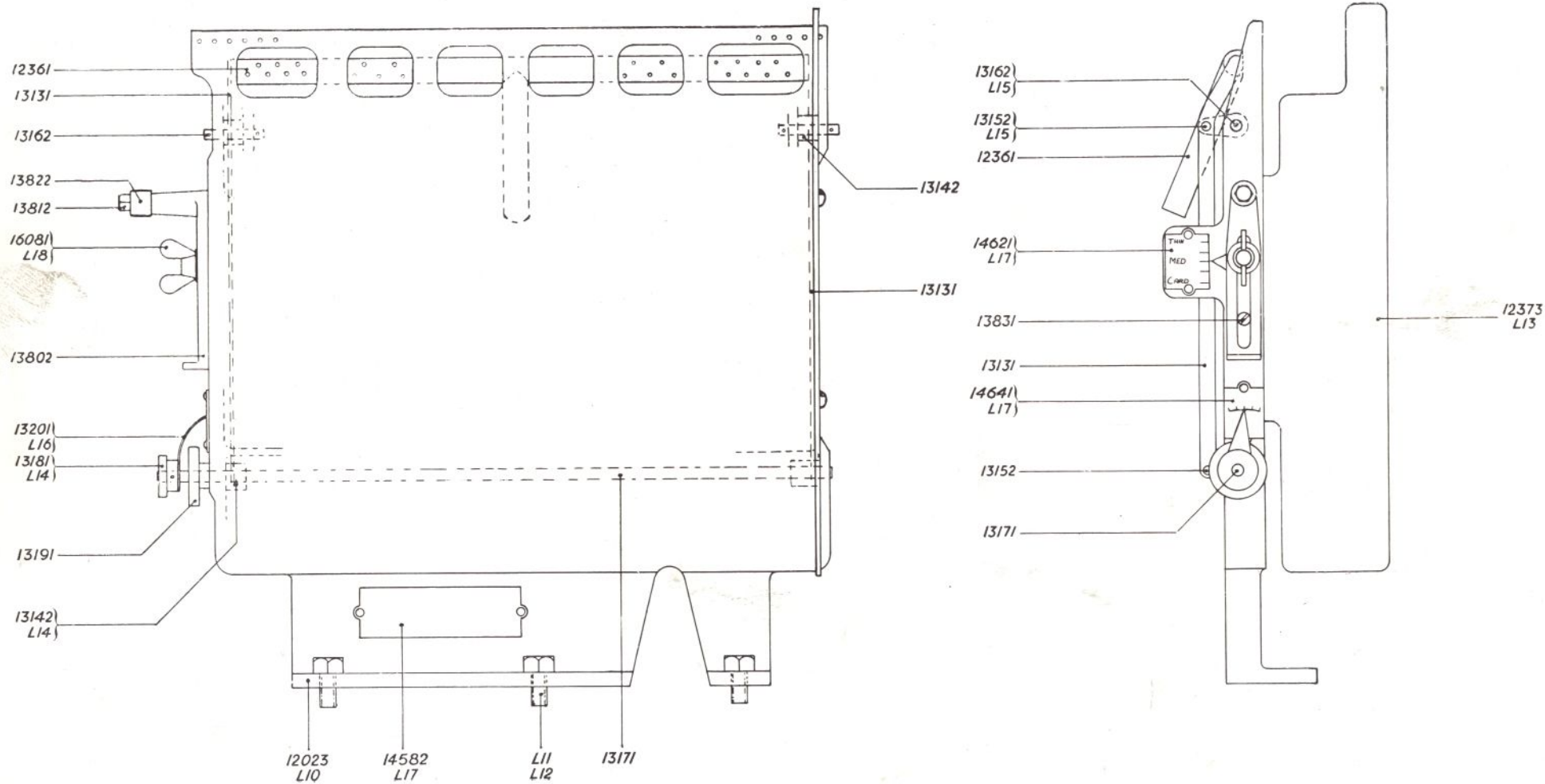
UNIT 'L' FEED BACK PLATE

| Ref. No. | Qty. | Name | Ref. No. | Qty. | Name |
|----------|------|-----------------------|----------|------|--------------------------|
| 12023 | 1 | Feed Back Plate. | 13201 | 1 | Pointer for 1318. |
| 12361 | 1 | Blower Tube. | 13802 | 1 | Feed Back Plate Bracket. |
| 12373 | 1 | Plate for 1202. | 13812 | 1 | Bowl Stud for 1380. |
| 13131 | 2 | Side Pieces for 1236. | 13822 | 1 | Bowl for 1381. |
| 13142 | 4 | Lever for 1313. | 13831 | 1 | Guide Screw for 1380. |
| 13152 | 4 | Pin for 1314. | 14582 | 1 | Patents Index Plate. |
| 13162 | 2 | Fulcrum Pin for 1314. | 14621 | 1 | Index for Sucker Tip. |
| 13171 | 1 | Blower Adjusting Bar. | 14641 | 1 | Index for Blower Lift. |
| 13181 | 1 | Handwheel for 1317. | 16081 | 1 | Wing Screw for 1380. |
| 13191 | 1 | Lockwheel for 1317. | | | |

UNIT 'L' STANDARD PARTS

| Ref. No. | Use with | Qty. | Description | Size | Length | Ref. No. | Use with | Qty. | Description | Size | Length |
|----------|----------|------|--------------------|------------------------|-----------------|----------|----------|------|-----------------------|-----------------------|-----------------|
| L 10 | 12023 | 2 | Dowel. | $\frac{1}{4}$ " dia. | 1" | L 15 | 13162 | 4 | Split Pin. | $\frac{1}{16}$ " dia. | $\frac{5}{8}$ " |
| L 11 | 12023 | 3 | Hex. Head Screw. | $\frac{1}{4}$ " B.S.F. | 1" | L 16 | 13201 | 2 | Cone Head Screw. | 6 B.A. | $\frac{1}{4}$ " |
| L 12 | 12023 | 3 | Washer. | $\frac{1}{8}$ " dia. | | L 17 | 14582 | 2 | Rivet (Parker Kalon) | $\frac{1}{8}$ " dia. | $\frac{1}{4}$ " |
| L 13 | 12373 | 2 | Button Head Screw. | $\frac{1}{4}$ " B.S.F. | $\frac{1}{2}$ " | L 17 | 14621 | 2 | Rivet (Parker Kalon). | $\frac{1}{8}$ " dia. | $\frac{1}{4}$ " |
| L 14 | 13142 | 2 | Taper Pin. | No. 0000 | $\frac{1}{2}$ " | L 17 | 14641 | 2 | Rivet (Parker Kalon). | $\frac{1}{8}$ " dia. | $\frac{1}{4}$ " |
| L 14 | 13181 | 1 | Taper Pin. | No. 0000 | 1" | L 18 | 13802 | 1 | Washer. | $\frac{5}{16}$ " dia. | |
| L 15 | 13152 | 4 | Split Pin. | $\frac{1}{16}$ " dia. | $\frac{5}{8}$ " | | | | | | |

L



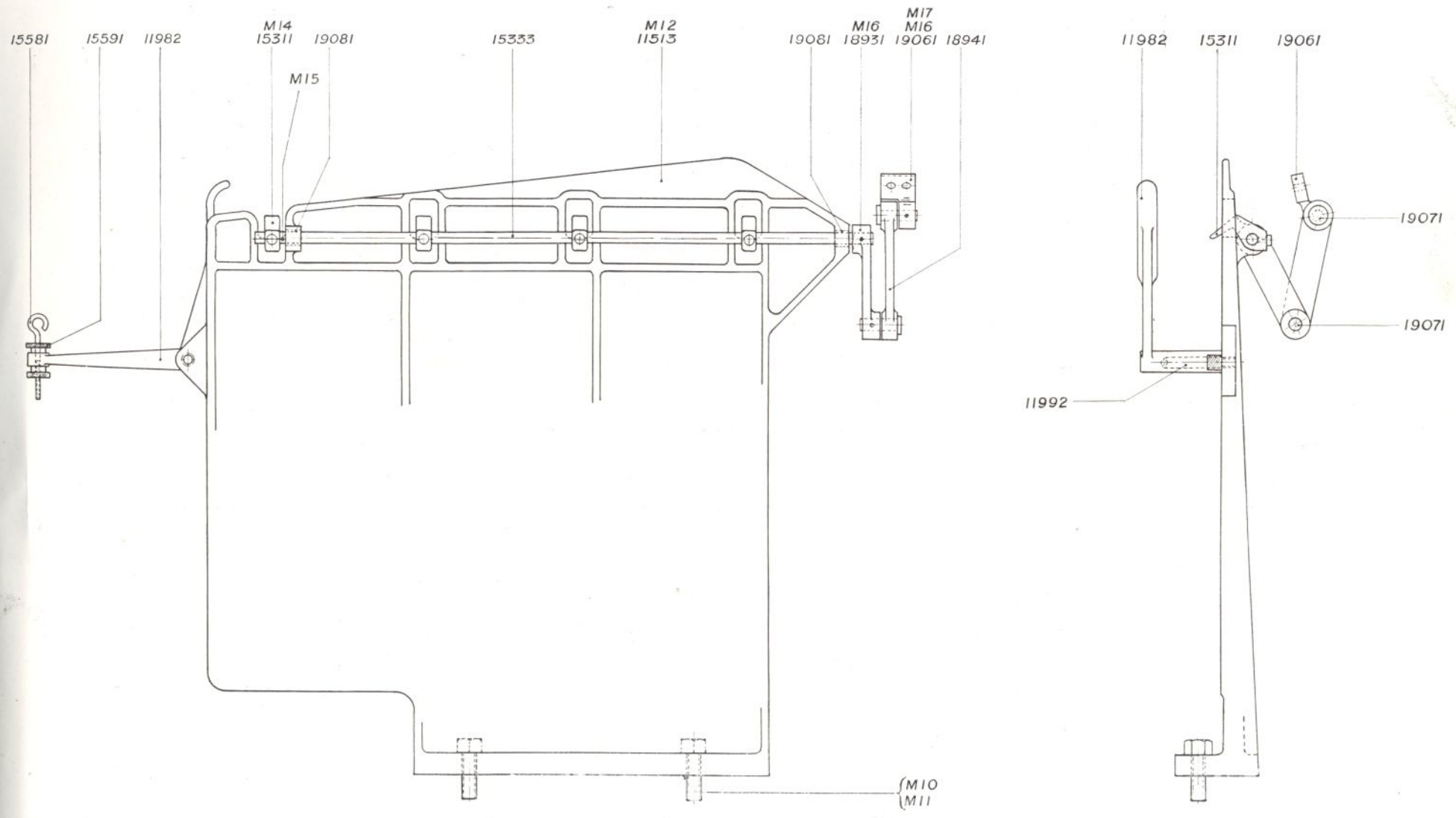
M**UNIT 'M' DELIVERY BACK PLATE**

| Ref. No. | Qty. | Name | Ref. No. | Qty. | Name |
|----------|------|----------------------------|----------|------|--------------------------------|
| 11513 | 1 | Delivery Back Plate. | 15591 | 2 | Nut for 1558. |
| 11982 | 1 | Delivery Jogger. | 18931 | 1 | Pile Straightener Lever. |
| 11992 | 1 | Delivery Jogger Pin. | 18941 | 1 | Pile Straightener Conn. Lever. |
| 15311 | 4 | Pile Straightener Clip. | 19061 | 1 | Driving Lever. |
| 15333 | 1 | Pile Straightener Spindle. | 19071 | 2 | Fulcrum Pin. |
| 15581 | 1 | Hook for 1198. | 19081 | 2 | Bush for 1151. |

UNIT 'M' STANDARD PARTS

| Ref. No. | Use with | Qty. | Description | Size | Length | Ref. No. | Use with | Qty. | Description | Size | Length |
|----------|----------|------|-----------------------|------------------------|-----------------|----------|----------|------|-----------------------|------------------------|-----------------|
| M 10 | 11513 | 2 | Hexagon Head Screw. | $\frac{3}{8}$ " B.S.F. | 1" | M 15 | 15333 | 1 | Split Pin. | $\frac{3}{32}$ " dia. | $\frac{3}{4}$ " |
| M 11 | 11513 | 2 | Washer. | $\frac{3}{8}$ " dia. | | M 16 | 18931 | 2 | Taper Pin. | No. 0000 | $\frac{3}{4}$ " |
| M 12 | 11513 | 2 | Dowel. | $\frac{1}{4}$ " dia. | 1" | M 16 | 19061 | 1 | Taper Pin. | No. 0000 | $\frac{3}{4}$ " |
| M 14 | 15311 | 4 | Allen Cap Head Screw. | 2 B.A. | $\frac{3}{8}$ " | M 17 | 19061 | 2 | Allen Cap Head Screw. | $\frac{1}{4}$ " B.S.F. | $\frac{3}{4}$ " |

M



N

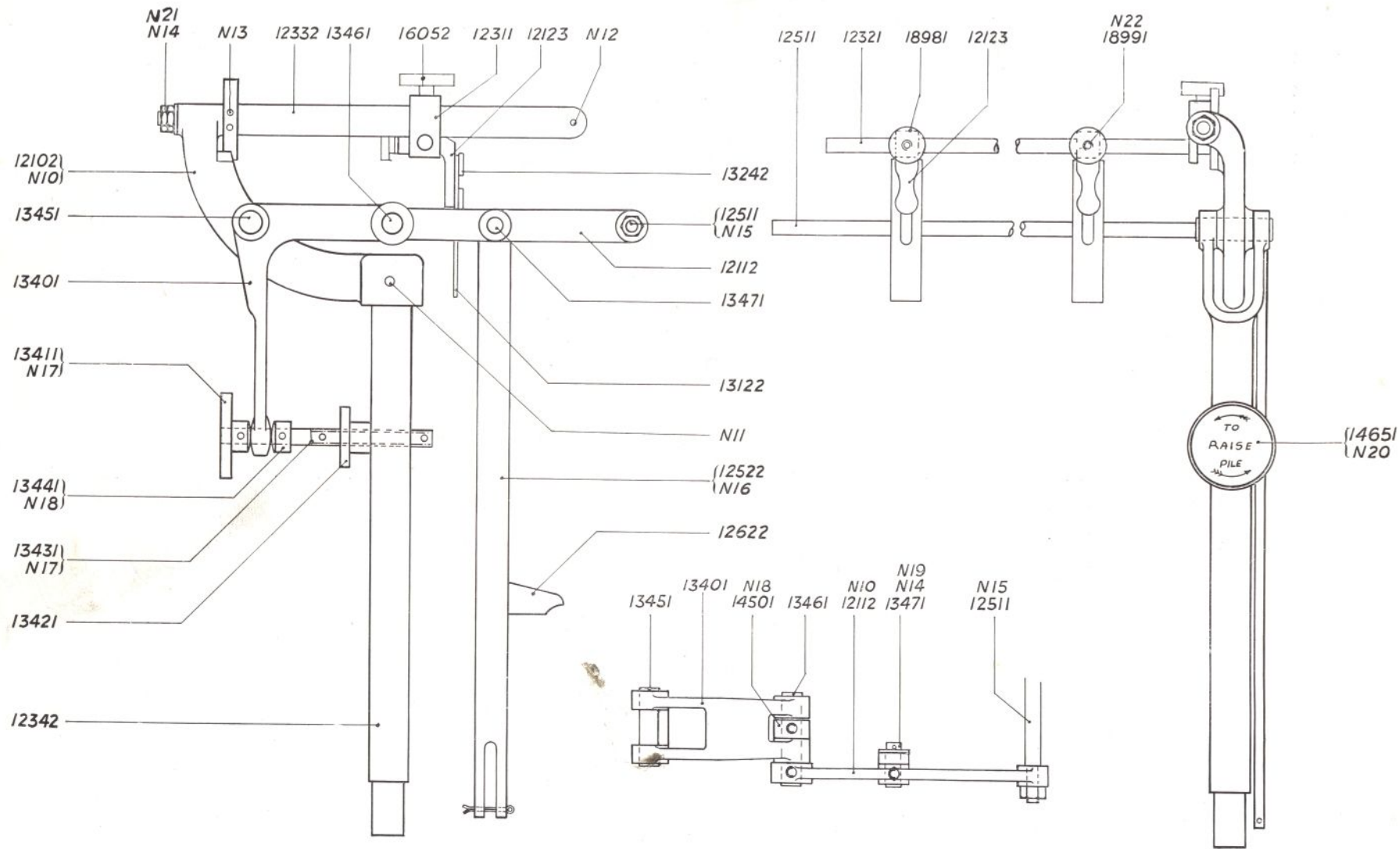
UNIT 'N' SHEET STEADIER PILLAR, AND FEELER

| Ref. No. | Qty. | Name | Ref. No. | Qty. | Name |
|----------|------|----------------------------------|----------|------|----------------------------------|
| 12102 | 1 | Sheet Steadier Bracket. | 13411 | 1 | Pile Height Adjusting Handwheel. |
| 12112 | 1 | Feeler Bar Lever. | 13421 | 1 | Pile Height Adjusting Lockwheel. |
| 12123 | 2 | Sheet Steadier Carrier. | 13431 | 1 | Pile Height Adjusting Pin. |
| 12311 | 1 | Sheet Steadier Rod End. | 13441 | 1 | Collar for 1343. |
| 12321 | 1 | Sheet Steadier Rod. | 13451 | 1 | Fulcrum Pin for 1340. |
| 12332 | 1 | Sheet Steadier Slide. | 13461 | 1 | Pin for 1211. |
| 12342 | 1 | Pillar for 1210. | 13471 | 1 | Pin for 1211. |
| 12511 | 1 | Feeler Bar. | 14501 | 1 | Collar for 1346. |
| 12522 | 1 | Feeler Bar Adjusting Rod. | 14651 | 1 | Index Disc " To Raise Pile." |
| 12622 | 1 | Catch Piece for 1252. | 16052 | 1 | Thumb Screw for 1231. |
| 13122 | 2 | Sheet Steadier. | 18981 | 2 | Locknut for 1212. |
| 13242 | 4 | Screw for 1212. | 18991 | 2 | Eyescrew for 1212. |
| 13401 | 1 | Pile Height Adjusting Bellcrank. | | | |

UNIT 'N' STANDARD PARTS

| Ref. No. | Use with | Qty. | Description | Size | Length | Ref. No. | Use with | Qty. | Description | Size | Length |
|----------|----------|------|-------------------|------------------------|------------------|----------|----------|------|-----------------------|------------------------|------------------|
| N 10 | 12102 | 1 | Allen Grub Screw. | $\frac{1}{4}$ " B.S.F. | $\frac{1}{4}$ " | N 16 | 12522 | 1 | Split Pin. | $\frac{3}{32}$ " dia. | $1\frac{1}{4}$ " |
| N 10 | 12112 | 2 | Allen Grub Screw. | $\frac{1}{4}$ " B.S.F. | $1\frac{1}{2}$ " | N 18 | 13441 | 1 | Allen Grub Screw. | $\frac{1}{4}$ " B.S.F. | $1\frac{1}{4}$ " |
| N 11 | 12102 | 1 | Taper Pin. | No. 4 | 2" | N 18 | 14501 | 1 | Allen Grub Screw. | $\frac{1}{4}$ " B.S.F. | $1\frac{1}{4}$ " |
| N 12 | 12332 | 1 | Taper Pin. | No. 0 | 1" | N 19 | 13471 | 1 | Split Pin. | $\frac{3}{32}$ " dia. | $1\frac{1}{4}$ " |
| N 12 | 13411 | 1 | Taper Pin. | No. 0 | 1" | N 20 | 14651 | 2 | Rivet (Parker Kalon). | $\frac{3}{8}$ " dia. | $1\frac{1}{4}$ " |
| N 13 | 12332 | 2 | Rivet. | $\frac{5}{16}$ " dia. | $\frac{3}{8}$ " | N 21 | 12332 | 2 | Locknut. | $\frac{5}{16}$ " Whit. | |
| N 14 | 12332 | 1 | Washer. | $\frac{5}{16}$ " dia. | | N 22 | 18981 | 2 | Washer. | $\frac{5}{16}$ " dia. | |
| N 14 | 13471 | 1 | Washer. | $\frac{5}{16}$ " dia. | | N 23 | 13431 | 2 | Taper Pin. | No. 0000 | 1" |
| N 15 | 12511 | 1 | Nut. | $\frac{1}{4}$ " B.S.F. | | | | | | | |

N



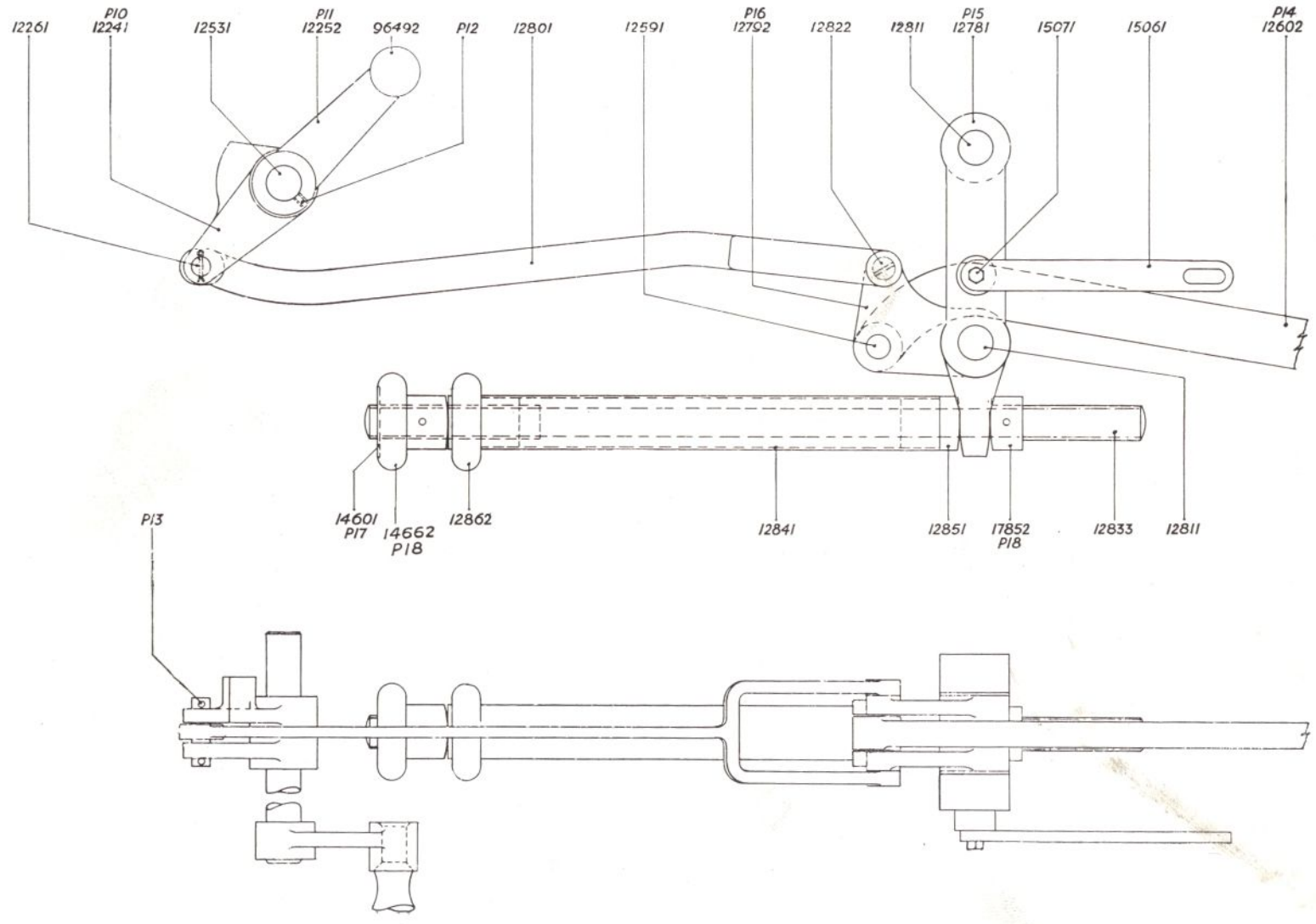
P

UNIT 'P' CHECK AND IMPRESSION ADJUSTMENT

| Ref. No. | Qty. | Name | Ref. No. | Qty. | Name |
|----------|------|----------------------------|----------|------|-------------------------------------|
| 96492 | 1 | Handle for 1225. | 12822 | 2 | Stud for 1280. |
| 12241 | 1 | Check Front Fork. | 12833 | 1 | Impression Adjustment Rod, |
| 12252 | 1 | Check Handle Lever. | 12841 | 1 | Impression Adjustment Sleeve. |
| 12261 | 1 | Pin for 1224. | 12851 | 1 | Impression Adjustment Sleeve End. |
| 12531 | 1 | Check Handle Shaft. | 12862 | 1 | Adjusting Sleeve Handwheel. |
| 12591 | 1 | Pin for 1260. | 14601 | 1 | Index Disc for Impression. |
| 12602 | 1 | Check Connecting Rod. | 14662 | 1 | Impression Adjusting Locking Wheel. |
| 12781 | 1 | Impression Adjusting Fork. | 15061 | 1 | Impression Adjusting Slot Link. |
| 12792 | 1 | Check Pressure Lever. | 15071 | 1 | Screw for 1506. |
| 12801 | 1 | Check Connecting Fork. | 17852 | 1 | Collar for 1283. |
| 12811 | 2 | Pin for 1278. | | | |

UNIT 'P' STANDARD PARTS

| Ref. No. | Use with | Qty. | Description | Size | Length | Ref. No. | Use with | Qty. | Description | Size | Length |
|----------|----------|------|-------------------|-------------------------|-------------------|----------|----------|------|----------------------|-----------------------|-------------------|
| P 10 | 12241 | 1 | Taper Pin. | No. 5 | 2 $\frac{1}{4}$ " | P 15 | 12781 | 1 | Split Pin. | $\frac{3}{16}$ " dia. | 2 $\frac{1}{2}$ " |
| P 11 | 12252 | 1 | Taper Pin. | No. 4 | 2 $\frac{1}{4}$ " | P 16 | 12792 | 2 | Allen Grub Screw. | 2 B.A. | $\frac{1}{4}$ " |
| P 12 | 12241 | 1 | Allen Grub Screw. | $\frac{5}{16}$ " B.S.F. | $\frac{3}{8}$ " | P 17 | 14601 | 2 | Rivet (Parker Kalon) | $\frac{1}{8}$ " dia. | $\frac{3}{4}$ " |
| P 13 | 12261 | 2 | Split Pin. | $\frac{3}{32}$ " dia. | $\frac{7}{8}$ " | P 18 | 17852 | 1 | Taper Pin. | No. 1 | 2" |
| P 14 | 12602 | 1 | Allen Grub Screw. | $\frac{5}{16}$ " B.S.F. | $\frac{5}{16}$ " | P 18 | 14662 | 1 | Taper Pin. | No. 1 | 2" |



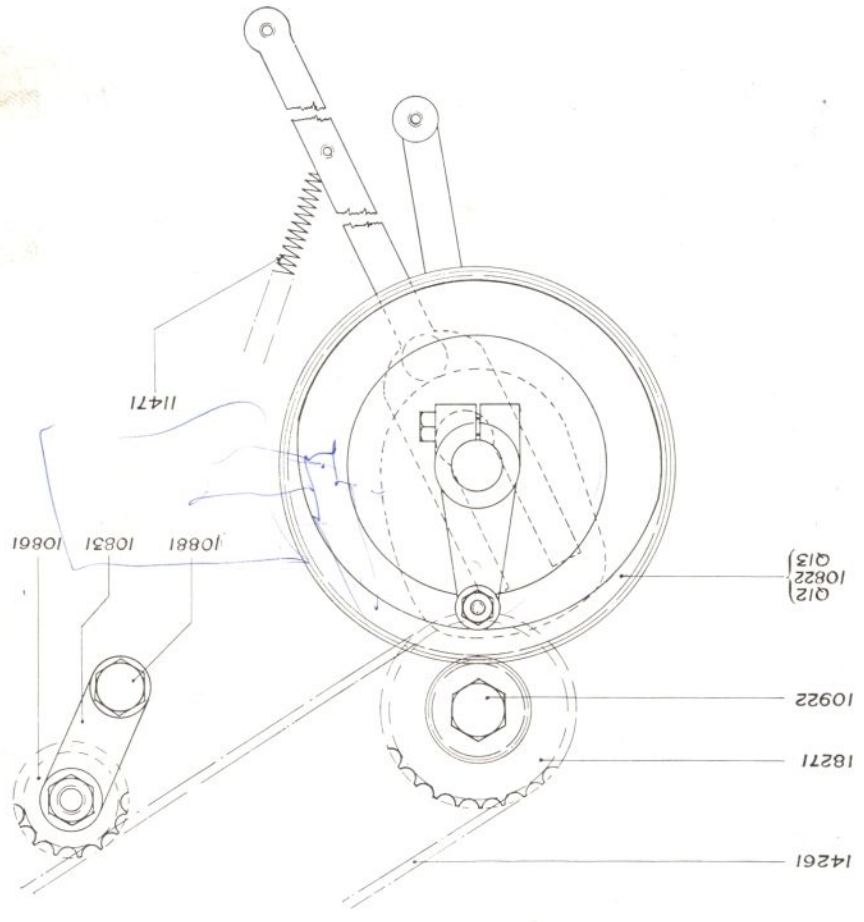
Q

UNIT 'Q' COUNTERSHAFT AND CHAIN DRIVE

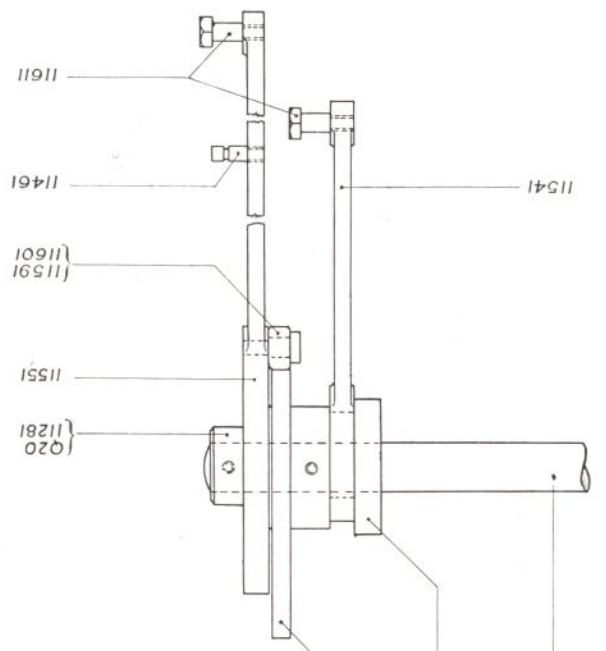
| Ref. No. | Qty. | Name | Ref. No. | Qty. | Name |
|----------|------|--------------------------------|----------|------|------------------------------------|
| 10802 | 1 | Pile Height Cam and Eccentric. | 11461 | 1 | Spring Stud for 1155 and 1027. |
| 10812 | 1 | Pile Operating Bush. | 11471 | 1 | Spring for 1155. |
| 10822 | 1 | Countershaft Gear Wheel. | 11541 | 1 | Pile Ratchet Connecting Lever. |
| 10831 | 1 | Chain Idler Lever. | 11551 | 1 | Pile Height Connecting Fork. |
| 10842 | 1 | Countershaft. | 11591 | 1 | Bowl Stud for 1155. |
| 10861 | 1 | Chain Idler. | 11601 | 1 | Bowl for 1159. |
| 10871 | 1 | Stud for 1086. | 11611 | 2 | Stud for Pile Motion. |
| 10881 | 1 | Bolt for 1083. | 14261 | 1 | Chain. |
| 10912 | 1 | Bush for 1827. | 14671 | 1 | Auto Stop Crank. |
| 10922 | 1 | Stud for 1091. | 14681 | 1 | Auto Stop Crank Pin. |
| 10931 | 1 | Bush for 1086. | 18271 | 1 | Crankshaft Chain Wheel and Pinion. |
| 11281 | 1 | Collar for 1372. | | | |

UNIT 'Q' STANDARD PARTS

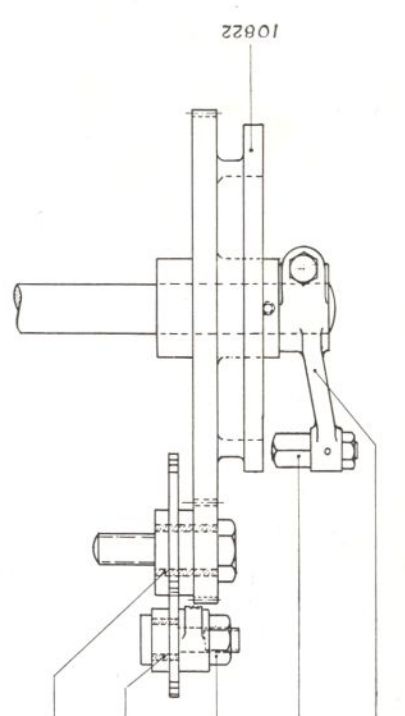
| Ref. No. | Use with | Qty. | Description | Size | Length | Ref. No. | Use with | Qty. | Description | Size | Length |
|----------|----------|------|-------------------|-------------------------------------|-------------------|----------|----------|------|-------------------|-------------------------|-------------------|
| Q 10 | 10802 | 1 | Key Steel. | $\frac{5}{16}$ " x $\frac{5}{16}$ " | 1 $\frac{3}{4}$ " | Q 15 | 14671 | 1 | Taper Pin. | No. 0 | 1 $\frac{1}{4}$ " |
| Q 11 | 10802 | 1 | Allen Grub Screw. | $\frac{1}{8}$ " B.S.F. | $\frac{3}{4}$ " | Q 16 | 14671 | 1 | Hex. Head Screw. | $\frac{3}{8}$ " B.S.F. | 2" |
| Q 12 | 10822 | 1 | Allen Grub Screw. | $\frac{1}{8}$ " B.S.F. | $\frac{1}{2}$ " | Q 19 | 14681 | 1 | Nut. | $\frac{7}{16}$ " Whit. | |
| Q 13 | 10822 | 1 | Key Steel. | $\frac{5}{16}$ " x $\frac{5}{16}$ " | 2" | Q 20 | 11281 | 1 | Allen Grub Screw. | $\frac{5}{16}$ " B.S.F. | $\frac{3}{8}$ " |
| Q 14 | 10871 | 1 | Nut. | $\frac{1}{2}$ " Whit. | | | | | | | |



- 14261
- 18271
- 10922
- Q12
- Q13
- 10822
- 10861
- 10831
- 10881
- 11471



- 11611
- 11461
- 11591
- 11601
- 11551
- 11281
- Q20



- 10822
- 14681
- Q19
- 10871
- Q14
- 10931
- 10912
- 10842
- 11541
- 11611
- 11461
- 11591
- 11601
- 11551
- 11281
- Q20
- 10802
- Q11
- Q10
- 10812
- 10822
- 10861
- 10831
- 10881
- 11471
- 14671
- Q16
- Q15
- Q14
- Q13
- Q12
- Q11

Q

R

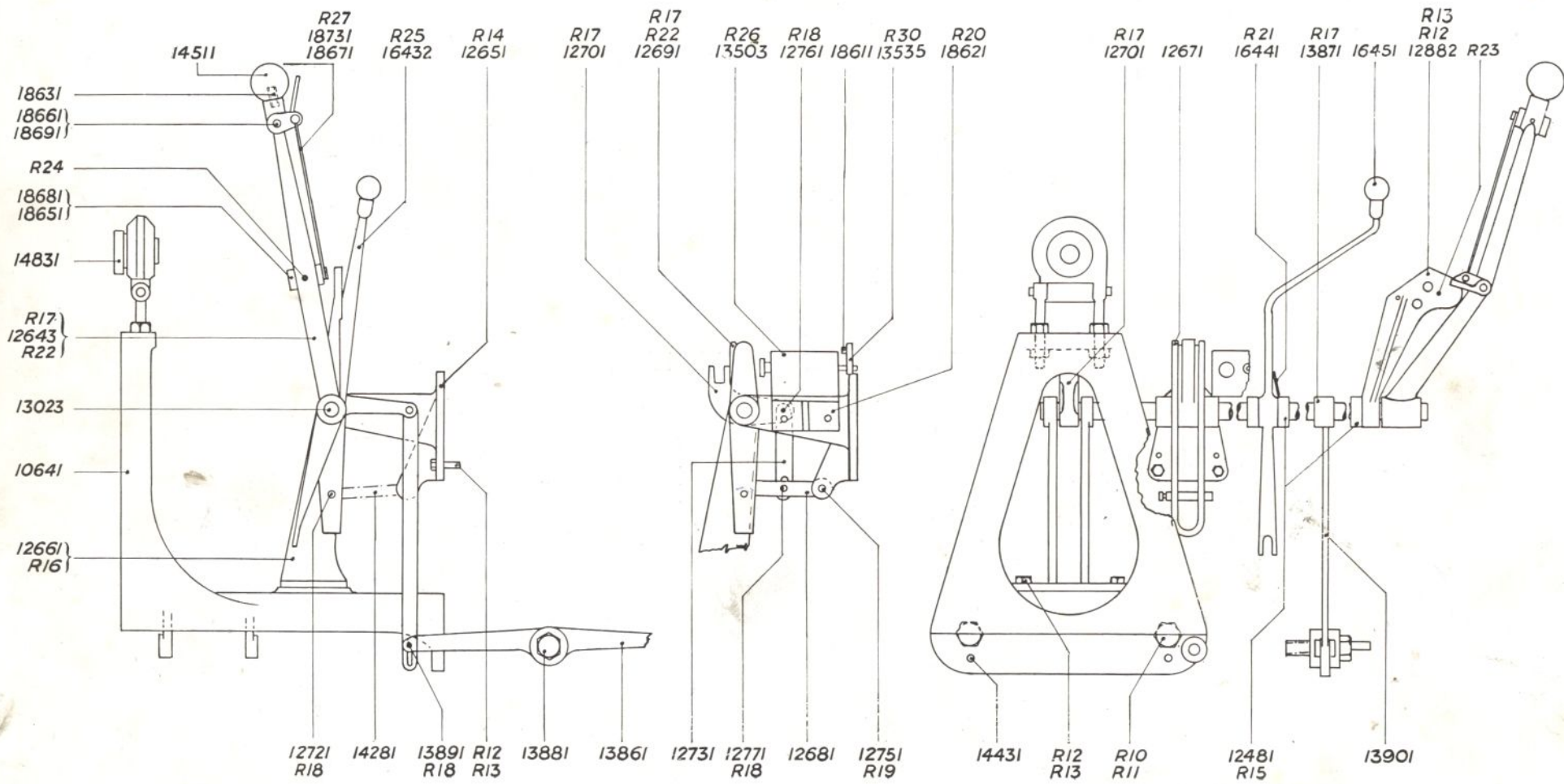
UNIT 'R' STARTING HANDLE AND SHAFT

| Ref. No. | Qty. | Name | Ref. No. | Qty. | Name |
|----------|------|------------------------------|----------|------|-------------------------------|
| 10641 | 1 | Flywheel Support Bracket. | 13881 | 1 | Fulcrum Stud for 1386. |
| 12481 | 3 | Collar for 1643. | 13891 | 2 | Pin for 1386-1387. |
| 12643 | 1 | Starting Handle. | 13901 | 1 | Connecting Rod for 1387-1386. |
| 12651 | 1 | Starting Shaft Main Bracket. | 14281 | 1 | Spring for 1267. |
| 12661 | 1 | Starting Shaft End Bracket. | 14431 | 2 | Dowel for 1064. |
| 12671 | 1 | Starting Spring Lever. | 14511 | 1 | Knob for 1264. |
| 12681 | 1 | Trip Catch. | 14831 | 1 | Adjustable Bearing for 1064. |
| 12691 | 1 | Trip Bellcrank. | 16432 | 1 | Suction Plunger Lever. |
| 12701 | 1 | Starting Shaft Lever. | 16441 | 1 | Index Disc for 1643. |
| 12721 | 1 | Spring Pin for 1267. | 16451 | 1 | Knob for 1643. |
| 12731 | 1 | Trip Catch Lever. | 18611 | 1 | Counter Spring Stud. |
| 12751 | 1 | Fulcrum Pin for 1268. | 18621 | 1 | Counter Bracket. |
| 12761 | 1 | Pin for 1269. | 18631 | 1 | Grub Screw for 1264. |
| 12771 | 1 | Extension Pin for 1268. | 18651 | 1 | Safety Catch. |
| 12882 | 1 | Starting Handle Bracket. | 18661 | 1 | Safety Catch Operating Lever. |
| 13023 | 1 | Starting Handle Shaft. | 18671 | 1 | Safety Catch Operating Link. |
| 13503 | 1 | Counter. | 18681 | 1 | Pin for 1865. |
| 13535 | 1 | Counter Crank. | 18691 | 1 | Pin for 1866. |
| 13861 | 1 | Stop Treadle. | 18731 | 2 | Pin for 1867. |
| 13871 | 1 | Stop Treadle Crank. | | | |

UNIT 'R' STANDARD PARTS

| Ref. No. | Use with | Qty. | Description | Size. | Length | Ref. No. | Use with | Qty. | Description | Size | Length |
|----------|----------|------|-------------------|-------------------------|-----------------|----------|----------|------|-----------------------|-------------------------|-----------------|
| R 10 | 10641 | 2 | Hex. Head Screw. | Whit. | 2" | R 18 | 12721 | 2 | Split Pin. | $\frac{3}{32}$ " dia. | $\frac{1}{4}$ " |
| R 11 | 10641 | 2 | Washer. | dia. | | R 18 | 12761 | 2 | Split Pin. | $\frac{3}{32}$ " dia. | $\frac{1}{4}$ " |
| R 12 | 12651 | 3 | Hex. Head Screw. | B.S.F. | 1" | R 18 | 12771 | 2 | Split Pin. | $\frac{3}{32}$ " dia. | $\frac{1}{4}$ " |
| R 12 | 12661 | 2 | Hex. Head Screw. | B.S.F. | 1" | R 18 | 13891 | 4 | Split Pin. | $\frac{3}{32}$ " dia. | $\frac{1}{4}$ " |
| R 12 | 12882 | 2 | Hex. Head Screw. | B.S.F. | 1" | R 19 | 12751 | 2 | Split Pin. | $\frac{3}{32}$ " dia. | $\frac{1}{4}$ " |
| R 13 | 12651 | 3 | Washer. | dia. | | R 20 | 18621 | 2 | Hex. Head Screw. | $\frac{5}{16}$ " B.S.F. | $\frac{1}{4}$ " |
| R 13 | 12661 | 2 | Washer. | dia. | | R 21 | 16432 | 2 | Rivet (Parker Kalon) | $\frac{1}{8}$ " dia. | $\frac{1}{4}$ " |
| R 13 | 12882 | 2 | Washer. | dia. | | R 22 | 12643 | 1 | Allen Grub Screw. | $\frac{5}{16}$ " B.S.F. | $\frac{1}{4}$ " |
| R 14 | 12651 | 2 | Dowel. | dia. | 1" | R 22 | 12691 | 1 | Allen Grub Screw. | $\frac{5}{16}$ " B.S.F. | $\frac{1}{4}$ " |
| R 15 | 12481 | 3 | Allen Grub Screw. | $\frac{5}{16}$ " B.S.F. | $\frac{1}{4}$ " | R 23 | 12882 | 2 | Dowel. | $\frac{1}{4}$ " dia. | $\frac{1}{4}$ " |
| R 16 | 12661 | 2 | Dowel. | dia. | $\frac{1}{8}$ " | R 24 | 12643 | 2 | Allen Grub Screw. | $\frac{5}{16}$ " B.S.F. | $\frac{1}{4}$ " |
| R 17 | 12691 | 1 | Taper Pin. | No. 4 | 2" | R 25 | 16432 | 1 | Grub Screw. | $\frac{5}{16}$ " B.S.F. | $\frac{1}{4}$ " |
| R 17 | 12701 | 1 | Taper Pin. | No. 4 | 2" | R 26 | 13503 | 3 | Allen Cap Head Screw. | 2 B.A. | $\frac{1}{4}$ " |
| R 17 | 12643 | 1 | Taper Pin. | No. 4 | 2" | R 27 | 18731 | 2 | Split Pin. | $\frac{1}{16}$ " dia. | $\frac{1}{4}$ " |
| R 17 | 13871 | 1 | Taper Pin. | No. 4 | 2" | R 30 | 13535 | 1 | Allen Cap Head Screw | $\frac{1}{4}$ " B.S.F. | $\frac{1}{4}$ " |

R



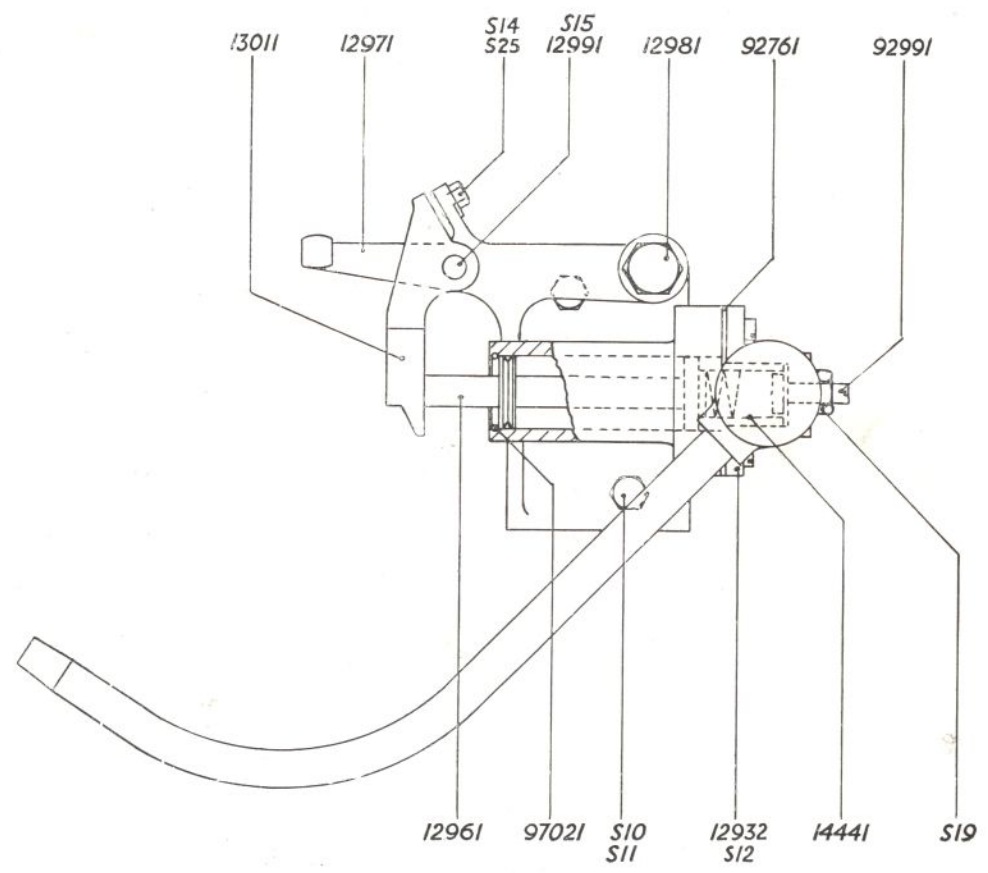
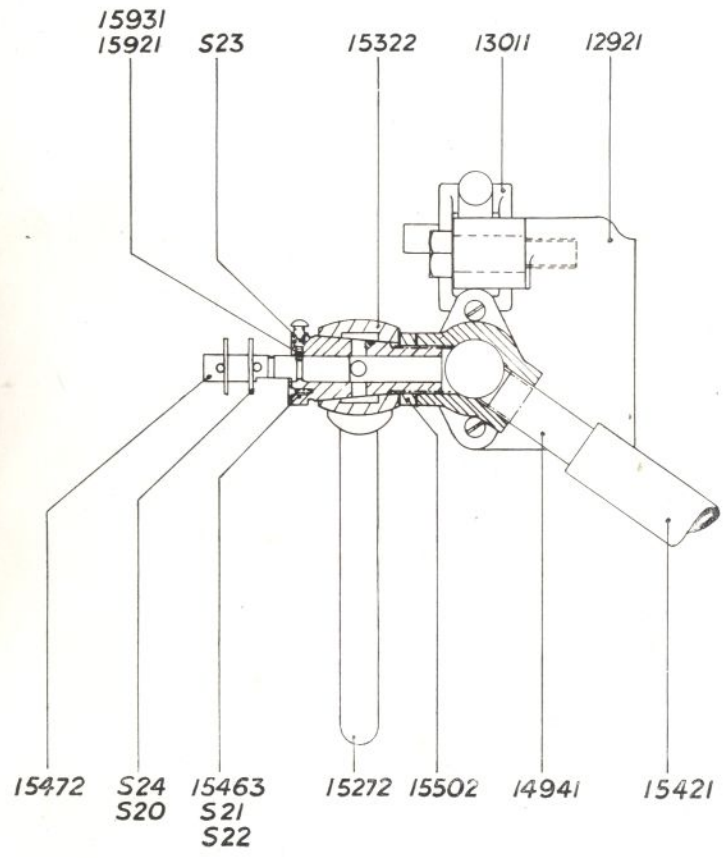
S

UNIT 'S' AUTOMATIC KNOCK-OFF

| Ref. No. | Qty. | Name | Ref. No. | Qty. | Name |
|----------|------|----------------------------|----------|------|---------------------------|
| 92761 | 1 | Washer for 1292. | 14441 | 1 | Air Spring for Auto Stop. |
| 92991 | 1 | Adjusting Screw for 1296. | 14941 | 1 | Pump Suction Tube. |
| 97021 | 1 | Spring Washer for 1292. | 15272 | 1 | Curved Suction Tube. |
| 12921 | 1 | Auto Stop Plunger Bracket. | 15322 | 1 | Swivel Union Body. |
| 12932 | 1 | Plunger Bracket Cap. | 15421 | 1 | Tubing for Knock-off. |
| 12961 | 1 | Plunger for 1292. | 15463 | 1 | Centre for Swivel Union. |
| 12971 | 1 | Auto Stop Catch Lever. | 15472 | 1 | Plunger for 1546. |
| 12981 | 1 | Stud for 1292. | 15502 | 1 | Locknut for 1546. |
| 12991 | 1 | Pin for 1301. | 15921 | 1 | Spring for 1546. |
| 13011 | 1 | Auto Stop Catch. | 15931 | 1 | Ball Bearing for 1546. |

UNIT 'S' STANDARD PARTS

| Ref. No. | Use with | Qty. | Description | Size | Length | Ref. No. | Use with | Qty. | Description | Size | Length |
|----------|----------|------|-----------------------|------------------------|------------------|----------|----------|------|--------------------|------------------------|-----------------|
| S 10 | 12921 | 2 | Hex. Head Screw. | $\frac{3}{8}$ " B.S.F. | $1\frac{1}{4}$ " | S 20 | 15472 | 2 | Washer. | $\frac{1}{2}$ " dia. | |
| S 11 | 12921 | 2 | Washer. | $\frac{3}{8}$ " dia. | | S 21 | 15463 | 1 | Cone Head Screw. | 2 B.A. | $\frac{1}{4}$ " |
| S 12 | 12932 | 2 | Allen Cap Head Screw. | $\frac{1}{4}$ " B.S.F. | $\frac{3}{4}$ " | S 22 | 15463 | 1 | Washer. | $\frac{3}{16}$ " dia. | |
| S 14 | 12971 | 1 | Nut. | $\frac{1}{4}$ " B.S.F. | | S 23 | 15463 | 1 | Button Head Screw. | 2 B.A. | $\frac{1}{4}$ " |
| S 15 | 12991 | 2 | Split Pin. | $\frac{3}{32}$ " dia. | $\frac{3}{4}$ " | S 24 | 15472 | 2 | Split Pin. | $\frac{3}{32}$ " dia. | 1" |
| S 19 | 92991 | 1 | Nut. | $\frac{5}{16}$ " Whit. | | S 25 | 12971 | 1 | Grub Screw | $\frac{1}{4}$ " B.S.F. | $\frac{3}{4}$ " |



T

UNIT 'T' SUCKER SLIDE

| Ref. No. | Qty. | Name | Ref. No. | Qty. | Name |
|----------|------|----------------------------------|----------|------|------------------------------|
| 11811 | 1 | Stud for 1129. | 14391 | 1 | Extension and Plug for 1305. |
| 11821 | 1 | Stud for 1221. | 14401 | 1 | Nozzle Connection for 1305. |
| 11832 | 2 | Plain Stud for 1214-1215. | 14411 | 1 | Nozzle for 1305. |
| 11842 | 2 | Eccentric Stud for 1214-1215. | 14421 | 1 | Nozzle for 1305. |
| 11852 | 1 | Pin for 1787. | 14461 | 1 | Plug for 1235. |
| 12141 | 1 | Runner Bracket. | 15041 | 1 | Jogger Chain Hook. |
| 12151 | 1 | Runner Bracket Plate. | 15231 | 1 | Sleeve End for 1305. |
| 12162 | 1 | Bar Carrier Fork. | 15241 | 1 | Plug for 1439. |
| 12191 | 1 | Feed Oscillating Pinion Lever. | 15251 | 1 | End Screw for 1439. |
| 12201 | 1 | Runner Bracket Connecting Lever. | 15431 | 1 | Tube for 1442. |
| 12211 | 1 | Bar Slide Connecting Lever. | 15441 | 1 | Tube for 1305 (1441). |
| 12221 | 1 | Feed Oscillating Pinion. | 16541 | 24 | Spring Clip for 1238. |
| 12231 | 1 | Sleeve Bush for 1222. | 16881 | 4 | Bowl for 1183-1184. |
| 12352 | 1 | Tube. | 16891 | 8 | Washer for 1688. |
| 12381 | 12 | Sucker. | 16901 | 64 | Needle Roller for 1688. |
| 12411 | 1 | Pin for 1215. | 17841 | 1 | Spring Pin for 1787. |
| 13052 | 1 | Exhaust Tube. | 17861 | 1 | Bar Slide Tube. |
| 13071 | 1 | Carrier for 1305. | 17871 | 1 | Bar Slide End. |
| 13103 | 1 | Exhaust Stop for 1215. | 17881 | 1 | Bar Slide Plug. |
| 13222 | 1 | Bush for 1216. | 17981 | 1 | Exhaust Release Swivel. |
| 13232 | 1 | Bush for 1216. | 17991 | 1 | Fulcrum Tube for 1798. |
| 13592 | 1 | Extension for 1216. | 18001 | 1 | Leather for 1798. |
| 13601 | 1 | Anchor Screw for 1427. | 18011 | 1 | Spring for 1305. |
| 13771 | 1 | Flanged Bush for 1787. | 18031 | 1 | Bearing Tube for 1798. |
| 13781 | 1 | Collar for Flanged Bush. | 18041 | 1 | Plug for 1305. |
| 13791 | 1 | Stud for 1221. | 18241 | 1 | Filter. |
| 13841 | 1 | Spring Washer for 1216. | 18251 | 1 | Tube End. |
| 14272 | 2 | Spring for 1216. | 18261 | 1 | Filter Cap. |

UNIT 'T' STANDARD PARTS

| Ref. No. | Use with | Qty. | Description | Size | Length | Ref. No. | Use with | Qty. | Description | Size | Length |
|----------|----------|------|-----------------------|----------|------------------|----------|----------|------|-----------------------|------------------------|------------------|
| T 10 | 11832 | 2 | Nut. | B.S.F. | | T 21 | 17871 | 1 | Cheese Head Screw. | 2 B.A. | $\frac{5}{16}$ " |
| T 10 | 11842 | 2 | Nut. | B.S.F. | | T 22 | 13071 | 1 | Nut. | 2 B.A. | |
| T 10 | 12191 | 2 | Nut. | B.S.F. | | T 22 | 13071 | 2 | Nut. | 2 B.A. | |
| T 11 | 12141 | 2 | Dowel | " dia. | $1\frac{1}{2}$ " | T 23 | 13071 | 2 | Cone Head Screw. | 2 B.A. | |
| T 12 | 12141 | 4 | Hex. Head Screw. | B.S.F. | $2\frac{1}{2}$ " | T 24 | 13592 | 2 | Cheese Head Screw. | 2 B.A. | |
| T 13 | 12141 | 4 | Washer. | " dia. | $1\frac{1}{2}$ " | T 25 | 13781 | 4 | Cone Head Screw. | $\frac{1}{8}$ " Whit. | |
| T 15 | 12162 | 1 | Allen Cap Head Screw. | 2 B.A. | $1\frac{1}{2}$ " | T 26 | 13052 | 1 | Taper Pin. | No. 0 | $1\frac{1}{2}$ " |
| T 16 | 12162 | 1 | Allen Grub Screw. | 2 B.A. | $1\frac{1}{2}$ " | T 28 | 17871 | 1 | Allen Cap Head Screw. | 2 B.A. | $1\frac{1}{2}$ " |
| T 16 | 18251 | 1 | Allen Grub Screw. | 2 B.A. | $1\frac{1}{2}$ " | T 29 | 17881 | 5 | Rivet. | $\frac{1}{4}$ " dia. | $1\frac{1}{2}$ " |
| T 17 | 12191 | 1 | Dowel. | " dia. | $1\frac{1}{2}$ " | T 30 | 17981 | 2 | Rivet (Parker Kalon). | $\frac{1}{8}$ " dia. | $1\frac{1}{2}$ " |
| T 18 | 12191 | 2 | Hex. Head Screw. | B.S.F. | $1\frac{1}{2}$ " | T 31 | 18031 | 1 | Split Pin. | $\frac{3}{32}$ " dia. | $1\frac{1}{2}$ " |
| T 19 | 12201 | 1 | Split Pin. | " dia. | $1\frac{1}{2}$ " | T 32 | 13841 | 2 | Cone Head Screw. | $\frac{3}{32}$ " Whit. | $2\frac{1}{2}$ " |
| T 20 | 12352 | 1 | Taper Pin. | No. 0000 | $1\frac{1}{2}$ " | T 33 | 15041 | 1 | Nut. | $\frac{3}{16}$ " Whit. | |
| T 21 | 13071 | 1 | Cheese Head Screw. | 2 B.A. | $\frac{5}{16}$ " | | | | | | |

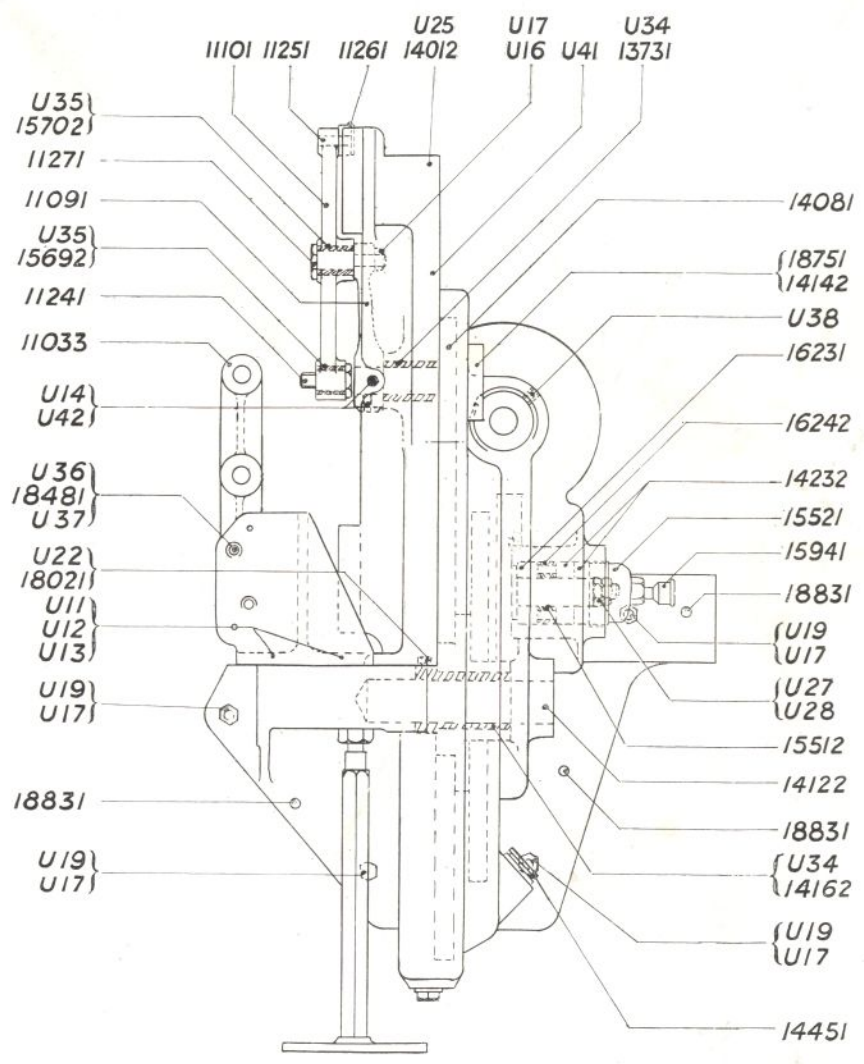
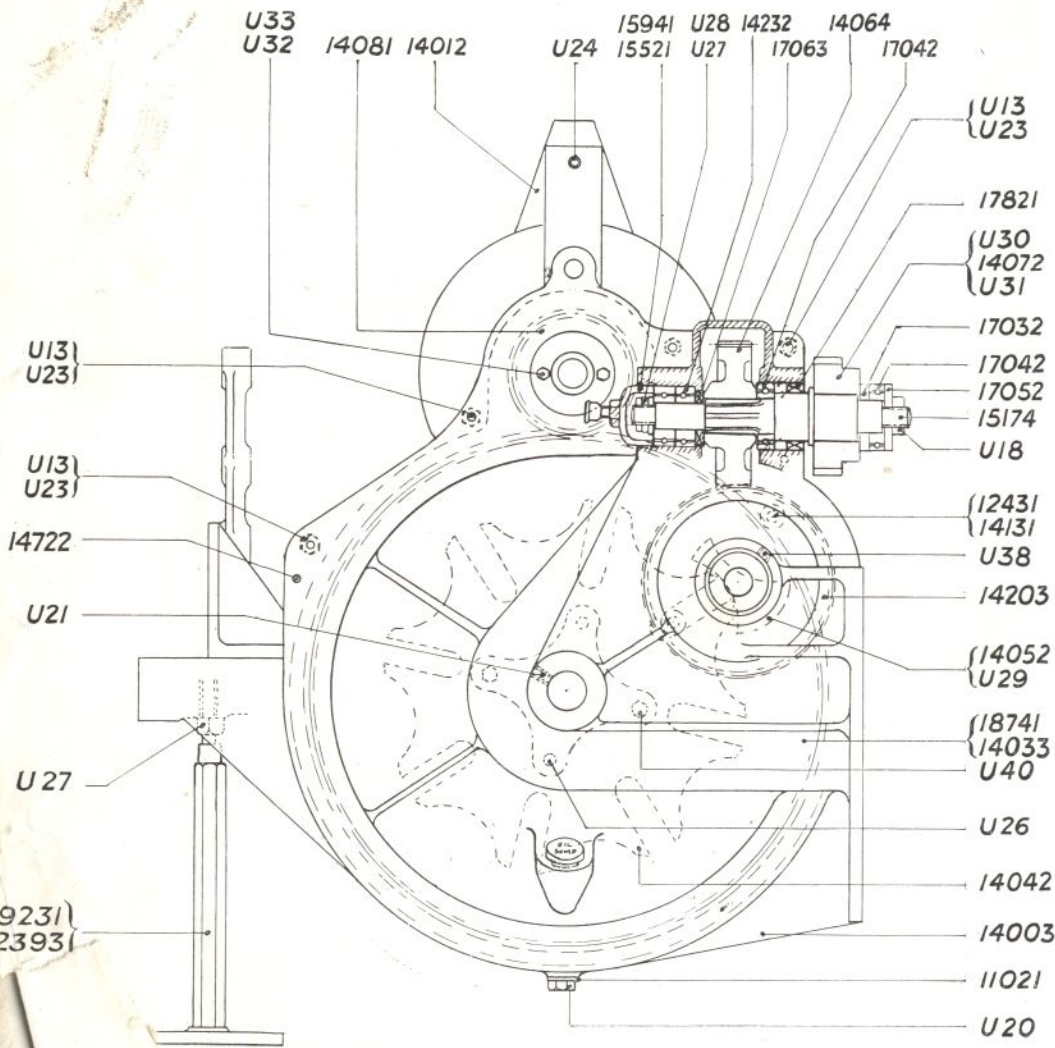
U

UNIT 'U' DELIVERY BRACKET

| Ref. No. | Qty. | Name | Ref. No. | Qty. | Name |
|----------|------|----------------------------|----------|------|--------------------------------------|
| 11011 | 1 | Base. | 14203 | 1 | Rim for Wormwheel (1405). |
| 11021 | 1 | Washer for 1400 (Leather). | 14232 | 4 | A.C. Ballrace. |
| 11033 | 1 | Slide Rail Support. | 14451 | 1 | Oil Plug for 1400. |
| 11091 | 1 | Operating Lever. | 14722 | 2 | Dowel for 1401. |
| 11101 | 1 | Toggle Lever. | 15174 | 1 | Inter Stud. |
| 11241 | 1 | Stud for 1106. | 15512 | 1 | Sleeve for 1405. |
| 11251 | 1 | Bowl Stud for 1110. | 15521 | 2 | Setting Collar for 1400. |
| 11261 | 1 | Bowl for 1125. | 15692 | 1 | End Bush for 1110. |
| 11271 | 1 | Toggle Stud for 1109. | 15702 | 1 | Centre Bush for 1110. |
| 12393 | 1 | Support Pillar. | 15941 | 2 | Lubricator for 1552. |
| 12431 | 2 | Needle Bearing for 1413. | 16231 | 1 | Cylindrical Roller Bearing for 1405. |
| 13731 | 1 | Bush for 1401. | 16242 | 1 | Sleeve for 1400. |
| 14003 | 1 | Bracket. | 17032 | 1 | Spacing Washer for 1517. |
| 14012 | 1 | Cover. | 17042 | 2 | End Race for 1517. |
| 14033 | 1 | Main Driving Wheel. | 17052 | 1 | End Washer for 1517. |
| 14042 | 1 | Star Wheel. | 17063 | 1 | Spacing Ring for 1517. |
| 14052 | 1 | Wormwheel Centre. | 17821 | 1 | Seal Ring. |
| 14064 | 1 | Inter-worm. | 18021 | 1 | Collar for Pin 1412. |
| 14072 | 1 | Inter-pinion. | 18481 | 1 | Base for 1103. |
| 14081 | 1 | Top Driving Pinion. | 18741 | 1 | Hub for 1403. |
| 14122 | 1 | Pin for 1403. | 18751 | 1 | Oil Seal for 1414. |
| 14131 | 2 | Bowl Stud for 1405. | 18831 | 3 | Dowel for 1400. |
| 14142 | 1 | Flanged Bush for 1400. | 19231 | 1 | Extension for 1239. |
| 14162 | 1 | Bush for 1403. | | | |

UNIT 'U' STANDARD PARTS

| Ref. No. | Use with | Qty. | Description | Size | Length | Ref. No. | Use with | Qty. | Description | Size | Length |
|----------|----------|------|-------------------|-----------|--------|----------|----------|------|-------------------|--------|--------|
| U 11 | 11033 | 2 | Dowel. | 1/8" dia. | 1" | U 27 | 15174 | 2 | Locknut. | Whit. | |
| U 12 | 11033 | 2 | Hex. Head Screw. | B.S.F. | 1" | U 28 | 14052 | 1 | Washer. | dia. | |
| U 13 | 11033 | 4 | Washer | dia. | | U 28 | 15174 | 1 | Washer. | dia. | |
| U 13 | 14012 | 5 | Washer. | dia. | | U 29 | 14052 | 4 | Allen Grub Screw. | B.S.F. | |
| U 14 | 11091 | 1 | Taper Pin. | No. 5 | 2 1/4" | U 30 | 14072 | 1 | Allen Grub Screw. | B.S.F. | |
| U 16 | 11271 | 1 | Locknut. | Whit. | | U 31 | 14072 | 1 | Taper Pin. | No. 7 | |
| U 17 | 11271 | 1 | Washer. | dia. | | U 32 | 14142 | 2 | Hex. Head Screw. | B.S.F. | |
| U 17 | 14003 | 4 | Washer. | dia. | | U 33 | 14142 | 2 | Washer. | dia. | |
| U 18 | 15174 | 1 | Nut. | Whit. | | U 34 | 13731 | 1 | Allen Grub Screw. | 2 B.A. | |
| U 19 | 14003 | 4 | Hex. Head Screw. | Whit. | 1 1/2" | U 34 | 14162 | 1 | Allen Grub Screw. | 2 B.A. | |
| U 20 | 14003 | 1 | Hex. Head Screw. | B.S.F. | 1 1/2" | U 35 | 15692 | 1 | Allen Grub Screw. | 2 B.A. | |
| U 21 | 14003 | 1 | Allen Grub Screw. | B.S.F. | 1 1/2" | U 35 | 15702 | 1 | Allen Grub Screw. | 2 B.A. | |
| U 22 | 18021 | 1 | Hex. Head Screw. | B.S.F. | 1 1/2" | U 36 | 11033 | 2 | Hex. Head Screw. | B.S.F. | 1 1/2" |
| U 23 | 14012 | 4 | Hex. Head Screw. | B.S.F. | 2 1/2" | U 37 | 11033 | 2 | Dowel. | dia. | 1 1/2" |
| U 24 | 14012 | 1 | Allen Grub Screw. | B.S.F. | 1 1/2" | U 38 | 14003 | 2 | Allen Grub Screw. | B.S.F. | 1 1/2" |
| U 25 | 14012 | 1 | Hex. Head Screw. | B.S.F. | 3 1/2" | U 40 | 14042 | 2 | Hex. Head Screw. | B.S.F. | 1 1/2" |
| U 26 | 14042 | 2 | Dowel. | dia. | 1 1/2" | U 41 | 14012 | 1 | Allen Grub Screw. | B.S.F. | 1 1/2" |
| U 27 | 14052 | 2 | Locknut. | Whit. | | U 42 | 11091 | 1 | Allen Grub Screw. | B.S.F. | 1 1/2" |
| U 27 | 19231 | 1 | Locknut. | Whit. | | | | | | | |



V

UNIT 'V' DELIVERY SLIDES

| Ref. No. | Qty. | Name | Ref. No. | Qty. | Name |
|----------|------|--------------------------|----------|------|----------------------------|
| 10401 | 1 | Toggle Slide Rail. | 11291 | 1 | Pin for 1411. |
| 10771 | 1 | Bowl for 1106. | 11301 | 1 | Fulcrum Pin for 1106. |
| 11041 | 1 | Gripper Fork. | 11311 | 2 | Bowl Stud for 1106-1107. |
| 11051 | 1 | Gripper Slide. | 11321 | 1 | Collar for 1108. |
| 11051 | 1 | Gripper Opening Lever. | 11331 | 1 | Bowl for 1107 |
| 11071 | 1 | Gripper Opening Cam. | 11381 | 1 | Connecting Link. for 1122. |
| 11081 | 1 | Gripper Slide Fork Bush. | 11521 | 60 | Needle for 1117. |
| 11122 | 8 | Pin for 1115. | 11571 | 96 | Needle for 1113. |
| 11131 | 8 | Bowl for 1112. | 12711 | 26 | Washer for 1113-1117. |
| 11141 | 1 | End Flange for 1115. | 13032 | 1 | Bush for 1105. |
| 11151 | 1 | Bush for Gripper Fork. | 13042 | 1 | Bush for 1105. |
| 11161 | 1 | End Plate for 1104. | 14212 | 1 | Toggle Shaft Extension. |
| 11171 | 5 | Bowl for 1116-1108. | 14221 | 1 | Collar for 1421. |
| 11181 | 2 | Distance Bush for 1116. | 14292 | 1 | Spring for Gripper Slide. |
| 11191 | 1 | Slide Rod Lever. | 15031 | 1 | Jogger Chain. |
| 11202 | 5 | Pin for 1117. | 15041 | 1 | Jogger Chain Hook. |
| 11212 | 1 | Slide End Lever. | 15221 | 1 | Pin for 1106. |
| 11231 | 1 | Slide Rail. | | | |

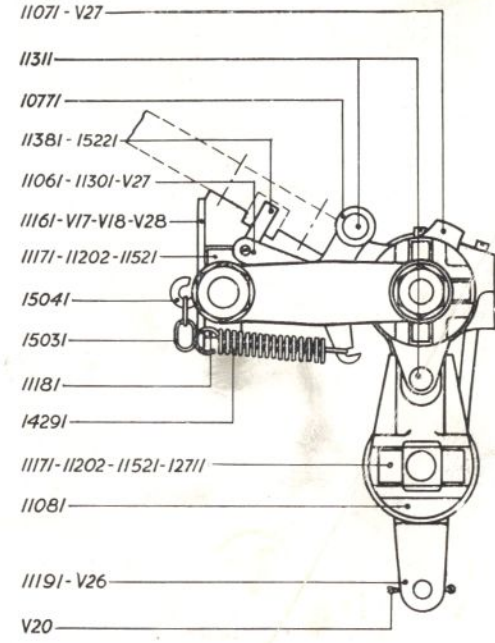
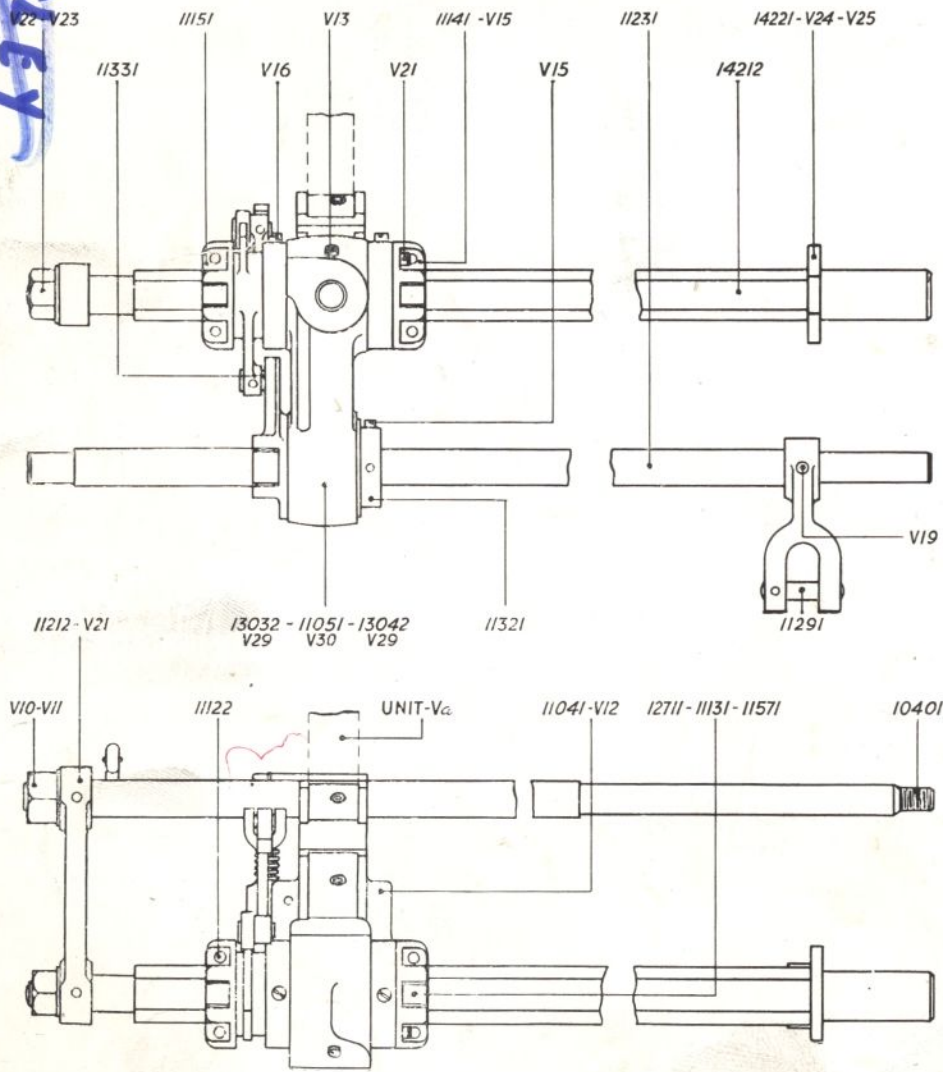
UNIT 'V' STANDARD PARTS

| Ref. No. | Use with | Qty. | Description | Size | Length | Ref. No. | Use with | Qty. | Description | Size | Length |
|----------|----------|------|-----------------------|-----------------------|-------------------|----------|----------|------|-----------------------|------------------------|-------------------|
| V 10 | 10401 | 1 | Locknut. | $\frac{5}{8}$ " Whit. | | V 22 | 14212 | 1 | Locknut. | $\frac{1}{2}$ " Whit. | |
| V 11 | 10401 | 1 | Washer. | $\frac{1}{2}$ " dia. | | V 23 | 14212 | 1 | Washer. | $\frac{1}{2}$ " dia. | |
| V 12 | 11041 | 1 | Taper Pin. | No. 0000 | 1 $\frac{1}{2}$ " | V 24 | 14221 | 2 | Allen Cap Head Screw. | 2 B.A. | $\frac{1}{4}$ " |
| V 13 | 11051 | 1 | Cheese Head Screw. | 2 B.A. | $\frac{1}{4}$ " | V 24 | 11141 | 2 | Allen Cap Head Screw. | 2 B.A. | $\frac{1}{4}$ " |
| V 14 | 11081 | 1 | Cheese Head Screw. | 2 B.A. | $\frac{1}{4}$ " | V 25 | 14221 | 1 | Dowel. | $\frac{5}{16}$ " dia. | |
| V 15 | 11141 | 2 | Dowel. | $\frac{3}{16}$ " dia. | $\frac{1}{4}$ " | V 26 | 11191 | 1 | Allen Grub Screw. | $\frac{1}{4}$ " B.S.F. | $\frac{1}{4}$ " |
| V 16 | 11151 | 2 | Allen Cap Head Screw. | 2 B.A. | $\frac{1}{4}$ " | V 27 | 11061 | 1 | Taper Pin. | No. 0000 | 1 $\frac{1}{2}$ " |
| V 17 | 11161 | 2 | Dowel. | $\frac{1}{8}$ " dia. | $\frac{1}{4}$ " | V 27 | 11071 | 1 | Taper Pin. | No. 0000 | 1 $\frac{1}{2}$ " |
| V 18 | 11161 | 2 | Cone Head Screw. | 2 B.A. | $\frac{1}{4}$ " | V 28 | 11161 | 2 | Cone Head Screw. | 2 B.A. | 1 $\frac{1}{2}$ " |
| V 19 | 11191 | 1 | Taper Pin. | No. 3 | $\frac{1}{4}$ " | V 29 | 13032 | 1 | Allen Grub Screw. | 2 B.A. | $\frac{1}{4}$ " |
| V 20 | 11191 | 1 | Split Pin. | $\frac{1}{8}$ " dia. | $\frac{1}{4}$ " | V 29 | 13042 | 1 | Allen Grub Screw. | 2 B.A. | $\frac{1}{4}$ " |
| V 21 | 11212 | 2 | Taper Pin. | No. 2 | $\frac{1}{4}$ " | V 30 | 11051 | 1 | Oil Pipe. | $\frac{1}{4}$ " dia. | 5 $\frac{1}{2}$ " |

(506 0018.)

HIED
 SEDROFT MOTOR
 WORSLEY

V



Va

UNIT 'Va' GRIPPER

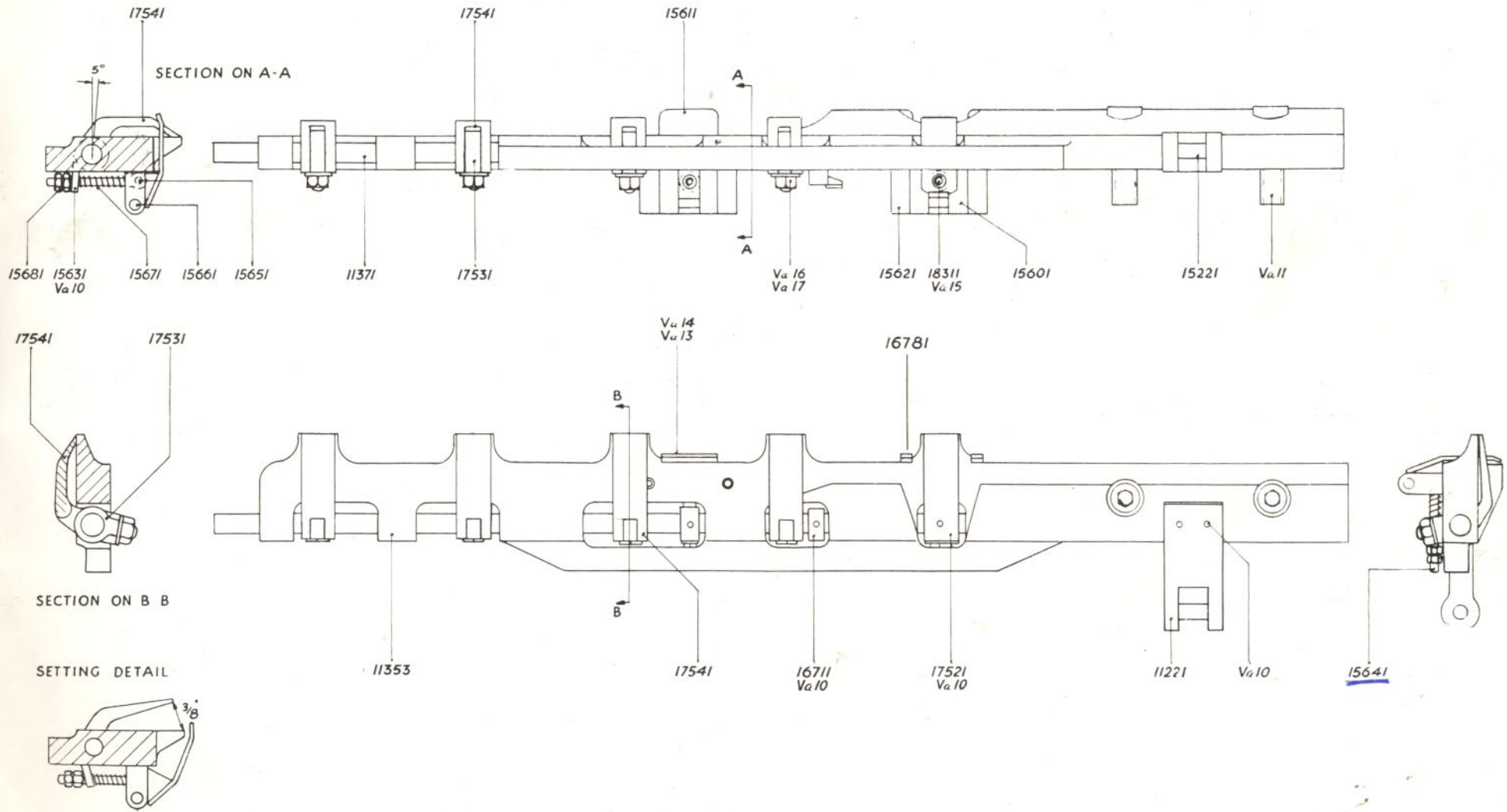
| Ref. No. | Qty. | Name | Ref. No. | Qty. | Name |
|----------|------|-------------------------|----------|------|------------------------|
| 11221 | 1 | Fork End. | 15661 | 2 | Fulcrum Pin for 1560. |
| 11353 | 1 | Delivery Gripper Bar. | 15671 | 2 | Spring for 1564. |
| 11371 | 1 | Delivery Gripper Rod. | 15681 | 4 | Locknut for 1564. |
| 15221 | 1 | Pin for 1122. | 16711 | 1 | Register Trip Lever. |
| 15601 | 2 | Ejector Hub. | 16781 | 1 | Forked Ejector Plate. |
| 15611 | 1 | Ejector Plate. | 17521 | 1 | Ejector Piece Gripper. |
| 15621 | 4 | Ejector Carrier Stud. | 17531 | 4 | Gripper Eye Stud. |
| 15631 | 1 | Ejector Back Piece. | 17541 | 4 | Forked Gripper. |
| 15641 | 2 | <u>Ejector Eye Pin.</u> | 18311 | 1 | Washer for 1564. |
| 15651 | 2 | Fulcrum Pin for 1564. | | | |

9.99
11.50

Pin
11.50

UNIT 'Va' STANDARD PARTS

| Ref. No. | Use with | Qty. | Description | Size | Length | Ref. No. | Use with | Qty. | Description | Size | Length |
|----------|----------|------|-----------------------|-------------------------|------------------|----------|----------|------|------------------|------------------------|------------------|
| Va 10 | 11221 | 2 | Taper Pin. | No. 0000 | $\frac{3}{32}$ " | Va 13 | 16781 | 1 | Rivet. | $\frac{3}{32}$ " dia. | $\frac{3}{16}$ " |
| Va 10 | 15631 | 1 | Taper Pin. | No. 0000 | $\frac{3}{32}$ " | Va 14 | 15611 | 2 | Cone Head Screw. | $\frac{3}{32}$ " Whit. | $\frac{1}{4}$ " |
| Va 10 | 16711 | 1 | Taper Pin. | No. 0000 | $\frac{3}{32}$ " | Va 14 | 16781 | 2 | Cone Head Screw. | $\frac{3}{32}$ " Whit. | $\frac{1}{4}$ " |
| Va 10 | 17521 | 1 | Taper Pin. | No. 0000 | $\frac{3}{32}$ " | Va 15 | 15641 | 1 | Washer. | 6 B.A. | |
| Va 11 | 11353 | 2 | Allen Cap Head Screw. | $\frac{5}{16}$ " B.S.F. | $\frac{3}{16}$ " | Va 16 | 17531 | 4 | Nut. | 2 B.A. | |
| Va 13 | 15611 | 1 | Rivet. | $\frac{3}{32}$ " dia. | $\frac{3}{16}$ " | Va 17 | 17531 | 4 | Washer. | $\frac{3}{16}$ " dia. | |



W

UNIT 'W' GUARD, TABLE AND DRAWER

| Ref. No. | Qty. | Name | Ref. No. | Qty. | Name |
|----------|------|-----------------------------|----------|------|-------------------------------|
| 11402 | 1 | Delivery Guard Tee End. | 18071 | 1 | Guard Rear Upright. |
| 11441 | 1 | Interleaving Table Support. | 18081 | 2 | Guard Back Cross Rail. |
| 11452 | 2 | Delivery Guard Pillar. | 18101 | 1 | Guard Lower Front Cross Rail. |
| 11652 | 1 | Box Bracket. | 18111 | 1 | Guard Top Front Cross Rail. |
| 11661 | 1 | Tool Box. | 18121 | 1 | Lower Guard Rail Union. |
| 11672 | 1 | Interleaving Table. | 18131 | 1 | Top Guard Rail Union. |
| 12572 | 1 | Screw for 1721. | 18142 | 1 | Stop Collar for 1720. |
| 16191 | 1 | $\frac{1}{8}$ " Gas Tap. | 18151 | 1 | Stop Peg for 1724. |
| 17103 | 1 | Extension for 1400. | 18161 | 1 | Guard Plate (Side). |
| 17202 | 1 | Vertical Blower Pillar. | 18172 | 1 | Guard Plate (Back). |
| 17212 | 1 | Horizontal Blower Arm. | 18201 | 15 | Clip for Guard Plate. |
| 17241 | 1 | Swivel Clamp. | 18371 | 2 | Wing Screw for 1724. |
| 17272 | 1 | Delivery Blower Holder. | 18421 | 1 | Clip for 1731. |
| 17311 | 1 | Connecting Tube for 1727. | 18781 | 1 | Pump Guard Rail. |
| 17922 | 1 | Delivery Blower Nozzle. | 18791 | 1 | Pump Guard Plate. |
| 17942 | 1 | Locking Ring for 1792. | | | |

UNIT 'W' STANDARD PARTS

| Ref. No. | Use with | Qty. | Description | Size | Length | Ref. No. | Use with | Qty. | Description | Size | Length |
|----------|----------|------|-------------------|-------------------------|------------------|----------|----------|------|--------------------|-------------------------|-----------------|
| W 10 | 11402 | 3 | Allen Grub Screw. | $\frac{5}{16}$ " B.S.F. | $\frac{1}{4}$ " | W 18 | 18142 | 3 | Allen Grub Screw. | $\frac{5}{16}$ " B.S.F. | $\frac{1}{4}$ " |
| W 10 | 17103 | 1 | Allen Grub Screw. | $\frac{5}{16}$ " B.S.F. | $\frac{1}{4}$ " | W 18 | 17103 | 1 | Allen Grub Screw. | $\frac{5}{16}$ " B.S.F. | $\frac{1}{4}$ " |
| W 11 | 11441 | 1 | Thumb Screw. | Whit. | $\frac{3}{16}$ " | W 19 | 18151 | 1 | Locknut. | $\frac{5}{16}$ " B.S.F. | $\frac{1}{4}$ " |
| W 12 | 11441 | 4 | Wood Screw. | No. 10 | $\frac{3}{16}$ " | W 20 | 18161 | 6 | Button Head Screw. | 6 B.A. | $\frac{1}{4}$ " |
| W 13 | 11452 | 4 | Nut. | Whit. | $\frac{3}{16}$ " | W 20 | 18172 | 4 | Button Head Screw. | 6 B.A. | $\frac{1}{4}$ " |
| W 14 | 11652 | 3 | Hex. Head Screw. | B.S.F. | $1\frac{1}{4}$ " | W 20 | 18791 | 5 | Button Head Screw. | 6 B.A. | $\frac{1}{4}$ " |
| W 15 | 11652 | 3 | Washer. | dia. | $\frac{3}{16}$ " | W 21 | 18161 | 6 | Nut. | 6 B.A. | $\frac{1}{4}$ " |
| W 15 | 17272 | 1 | Washer. | dia. | $\frac{3}{16}$ " | W 21 | 18172 | 4 | Nut. | 6 B.A. | $\frac{1}{4}$ " |
| W 16 | 17272 | 1 | Hex. Head Screw. | B.S.F. | $1\frac{1}{4}$ " | W 21 | 18791 | 5 | Nut. | 6 B.A. | $\frac{1}{4}$ " |
| W 18 | 18121 | 4 | Allen Grub Screw. | $\frac{5}{16}$ " B.S.F. | $\frac{1}{4}$ " | W 22 | 18172 | 1 | Button Head Screw. | 2 B.A. | $\frac{1}{4}$ " |
| W 18 | 18131 | 3 | Allen Grub Screw. | $\frac{5}{16}$ " B.S.F. | $\frac{1}{4}$ " | W 23 | 11652 | 2 | Nut. | $\frac{3}{8}$ " B.S.F. | $\frac{1}{4}$ " |

X

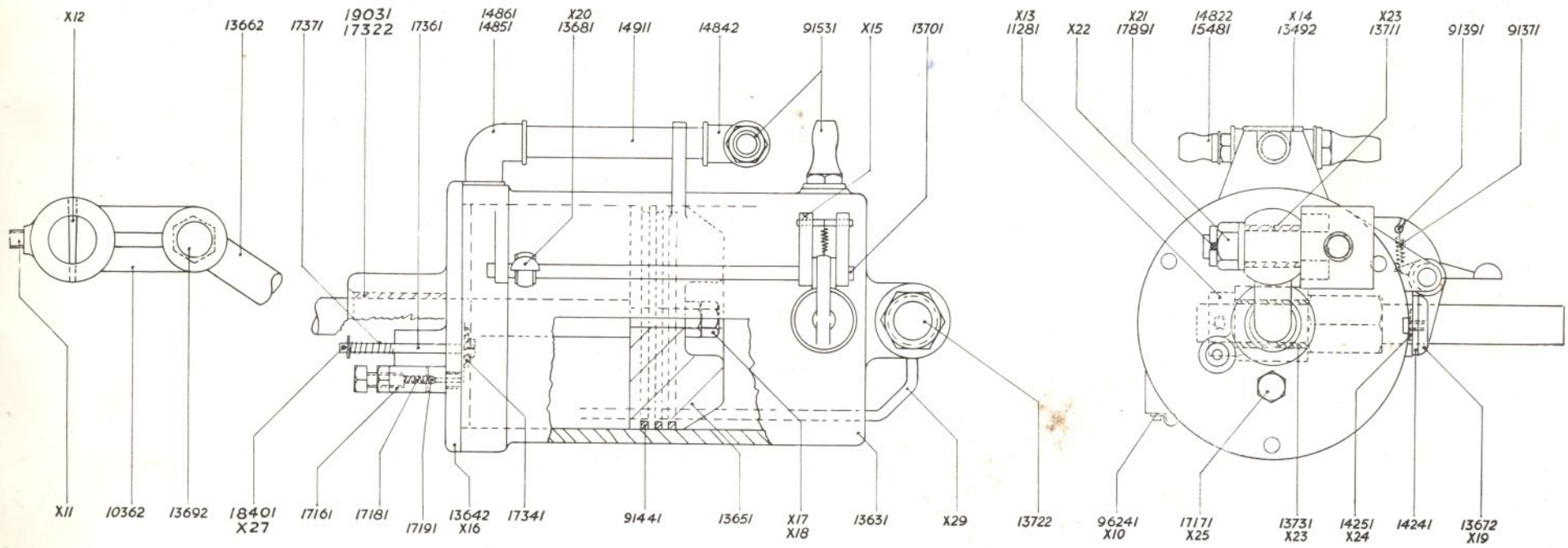
UNIT 'X' PUMP

| Ref. No. | Qty. | Name | Ref. No. | Qty. | Name |
|----------|------|---------------------------|----------|------|---------------------------------|
| 91371 | 1 | Spring for 1367. | 14241 | 1 | Leather Washer for 1367. |
| 91391 | 1 | Spring Pin for 1367. | 14251 | 2 | Steel Washer for 1367-1736. |
| 91441 | 3 | Piston Ring for 1365. | 14822 | 1 | 1/8" Gas Coupling for 1484. |
| 91531 | 2 | Nozzle for Pump Cylinder. | 14842 | 1 | 1/2" Gas Tee. |
| 96241 | 1 | Clip for Oil Pipe. | 14851 | 1 | 1/2" Gas Elbow. |
| 10362 | 1 | Pump Crank. | 14861 | 1 | 1/2" Gas Union. |
| 11281 | 1 | Collar for 1372. | 14911 | 1 | Pump Extension Tube. |
| 13492 | 1 | Plate for Pump Cylinder. | 15481 | 1 | Nozzle for 1485. |
| 13631 | 1 | Pump Cylinder. | 17161 | 1 | Pump Relief Valve Body. |
| 13642 | 1 | Lid for Pump Cylinder. | 17171 | 1 | Pump Relief Valve Screw. |
| 13651 | 1 | Pump Piston. | 17181 | 1 | Pump Relief Valve Spring. |
| 13662 | 1 | Pump Piston Rod. | 17191 | 1 | Pump Relief Valve Ball Bearing. |
| 13672 | 1 | Clack Valve. | 17322 | 2 | Bush for Pump Lid. |
| 13681 | 1 | Clack Valve Lever. | 17341 | 1 | Pump Inlet Valve Washer. |
| 13692 | 1 | Crank Pin for Pump. | 17361 | 1 | Pump Inlet Valve Spindle. |
| 13701 | 1 | Rod for Clack Valve. | 17371 | 1 | Pump Inlet Valve Spring. |
| 13711 | 1 | Bush for Pump Piston Rod. | 17891 | 1 | Castle Nut for 1369. |
| 13722 | 1 | Pump Fulcrum Stud. | 18401 | 1 | Washer. |
| 13731 | 1 | Bush for 1363. | 19031 | 1 | Oil Retainer. |

UNIT 'X' STANDARD PARTS

| Ref. No. | Use with | Qty. | Description. | Size | Length | Ref. No. | Use with | Qty. | Description | Size | Length |
|----------|----------|------|-----------------------|--------------|--------|----------|----------|------|--------------------|-------------|--------|
| X 10 | 96241 | 1 | Button Head Screw. | 2 B.A. | 1 1/2" | X 20 | 17361 | 1 | Washer. | 1/4" dia. | |
| X 11 | 10362 | 1 | Allen Grub Screw. | 3/8" B.S.F. | 1 1/2" | X 21 | 13692 | 1 | Washer. | 5/8" dia. | |
| X 12 | 10362 | 1 | Taper Pin. | No. 7 | 2 1/2" | X 22 | 13692 | 1 | Split Pin. | 1/8" dia. | |
| X 13 | 11281 | 1 | Allen Grub Screw. | 5/16" B.S.F. | 1 1/2" | X 23 | 13711 | 1 | Allen Grub Screw. | 2 B.A. | |
| X 14 | 13492 | 2 | Button Head Screw. | 5/32" Whit. | 1 1/2" | X 23 | 13731 | 1 | Allen Grub Screw. | 2 B.A. | 1 1/2" |
| X 15 | 13631 | 1 | Allen Grub Screw. | 2 B.A. | 1 1/2" | X 24 | 14251 | 1 | Cheese Head Screw. | 1/4" B.S.F. | |
| X 16 | 13642 | 3 | Allen Cap Head Screw. | 1/4" B.S.F. | 1 1/2" | X 25 | 17171 | 1 | Nut. | 5/8" B.S.F. | |
| X 17 | 13662 | 2 | Locknut. | 1/2" Whit. | 1 1/2" | X 27 | 17361 | 1 | Split Pin. | 1/8" dia. | 1 1/2" |
| X 18 | 13662 | 1 | Washer. | 1/2" dia. | 1 1/2" | X 28 | 17361 | 1 | Nut. | 1/4" B.S.F. | |
| X 19 | 13672 | 1 | Taper Pin. | No. 0 | 1 1/4" | X 29 | 13631 | 1 | Oil Pipe. | 1/4" dia. | 12" |
| X 19 | 13681 | 1 | Taper Pin. | No. 0 | 1 1/4" | | | | | | |

X



Y

UNIT "Y" SPARES AND TOOL KIT

| Ref. No. | Qty. | Name | Ref. No. | Qty. | Name |
|----------|------|---------------------------|----------|------|---|
| 94801 | 1 | Vibrator Roller Stock. | 15831 | 1 | $\frac{3}{16}$ " $\frac{1}{8}$ " Spanner. |
| 95051 | 1 | Vibrator Roller Stock | 15841 | 1 | $\frac{5}{16}$ " $\frac{3}{4}$ " Spanner. |
| 97011 | 12 | Rubber Sucker. | 15851 | 1 | $\frac{1}{2}$ " $\frac{3}{8}$ " Spanner. |
| 12381 | 3 | Sucker. | 15861 | 1 | $\frac{9}{16}$ " $\frac{7}{8}$ " Spanner. |
| 13741 | 3 | Sheet Separator (Long). | 15871 | 1 | $\frac{3}{4}$ " $\frac{5}{8}$ " Spanner. |
| 13751 | 3 | Sheet Separator (Short). | 16381 | 1 | $\frac{1}{4}$ " Allen Key. |
| 13761 | 3 | Sheet Separator (Medium). | 16391 | 1 | $\frac{5}{16}$ " Allen Key. |
| 13952 | 2 | Inking Roller Stock. | 16401 | 1 | $\frac{3}{8}$ " Allen Key. |
| 13981 | 2 | Pin for 1171. | 16411 | 1 | $\frac{1}{2}$ " Allen Key. |
| 15181 | 1 | Small Chase. | 16541 | 6 | Sucker Spring Clip. |
| 15731 | 1 | Type High Roller. | 18241 | 2 | Filter. |
| 15741 | 1 | Type High Roller Hook. | 18301 | 1 | $\frac{3}{16}$ " Allen Key. |
| 15781 | 1 | Rubber Blanket. | 18381 | 1 | $\frac{7}{16}$ " Allen Key. |
| 15801 | 1 | Force Feed Oil Can. | 18411 | 1 | Sundries Box. |
| 15811 | 1 | Large Screw Driver. | 18471 | 1 | $\frac{3}{4}$ " Allen Key. |
| 15821 | 1 | Small Screw Driver. | 18951 | 2 | Shear Collar. |

UNIT "Y" STANDARD PARTS

| Ref. No. | Use with | Qty. | Description | Size | Length |
|----------|----------|------|-------------|-----------------|--------|
| Y 10 | Unit U. | 1 | Locknut. | $\frac{1}{2}$ " | Whit. |

Y



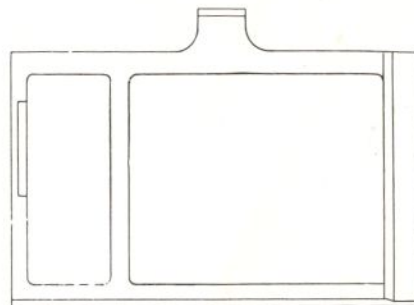
9480I



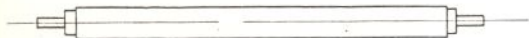
1374I
1375I
1376I



1581I
1582I



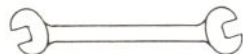
1518I



9505I



1398I



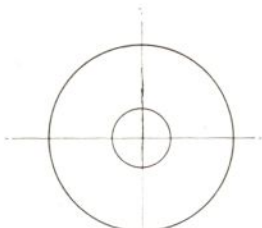
1583I 1586I
1584I 1587I
1585I



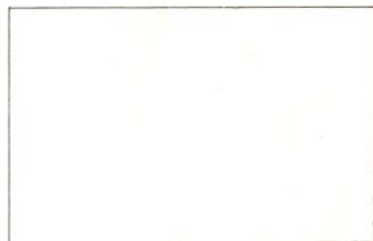
13952



1573I
1574I



1895I



1578I



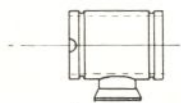
1824I



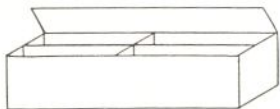
9701I



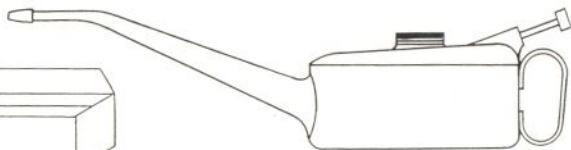
1654I



1238I



1841I



1580I



1638I 1830I
1639I 1838I
1640I 1847I
1641I

LIST OF UNITS

| Unit | Description | Unit | Description |
|----------|---------------------|-----------|----------------------------------|
| A | Body | N | Sheet Steadier Pillar and Feeler |
| B | Side Plates | P | Check and Impression Adjustment |
| C | Toggle Lever Motion | Q | Countershaft and Chain Drive |
| D | Front Toggle | R | Starting Handle and Shaft |
| E | Flywheel Shaft | S | Automatic Knock-off |
| F | Ink Drum | T | Sucker Slide |
| G | Roller Arms | U | Delivery Bracket |
| H | Ink Distribution | V | Delivery Slides |
| J | Ink Duct | Va | Gripper |
| K | Feed Bracket | W | Guard, Table and Drawer |
| L | Feed Back Plate | X | Pump |
| M | Delivery Back Plate | Y | Spares and Tool Kit |