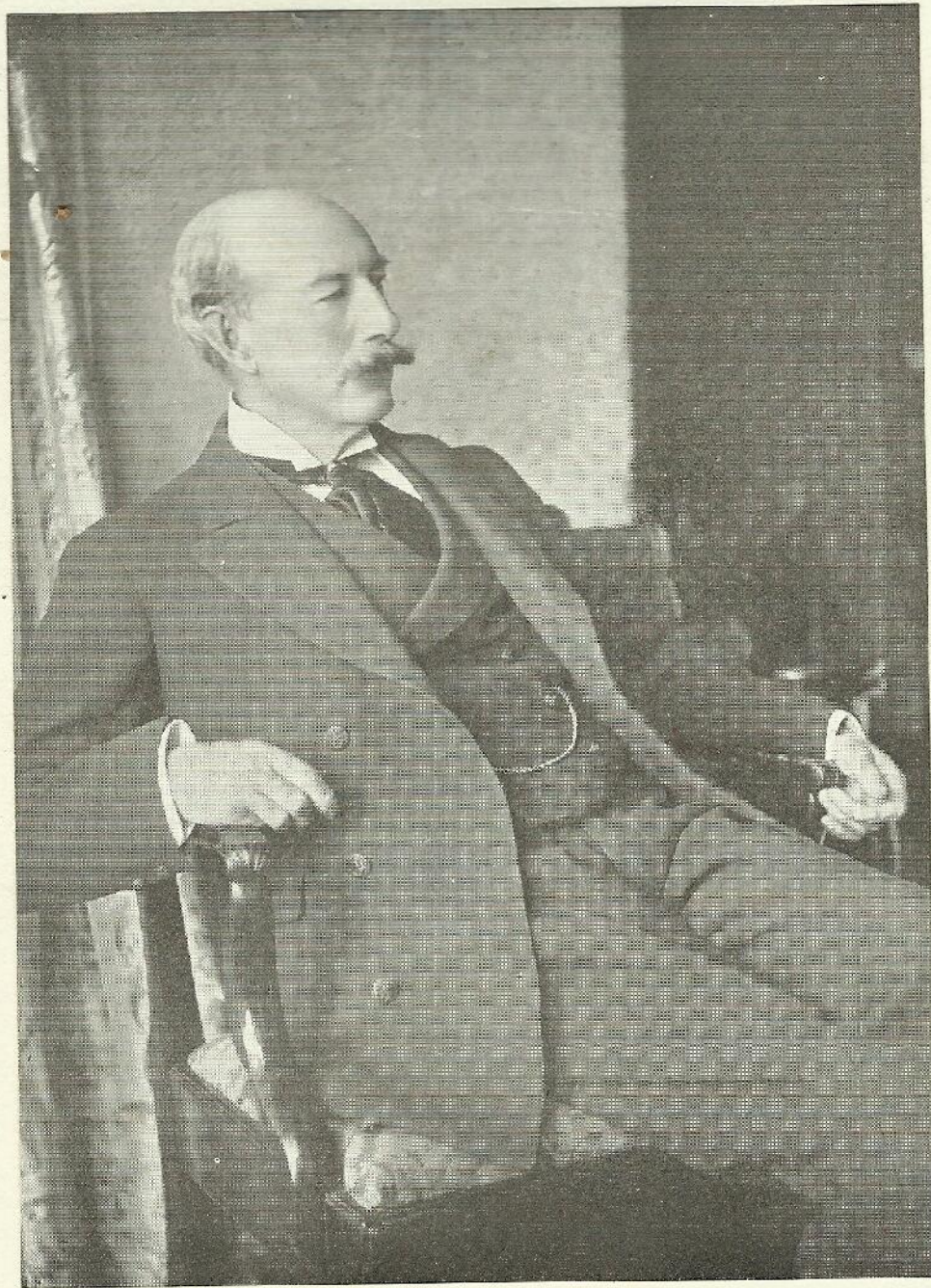
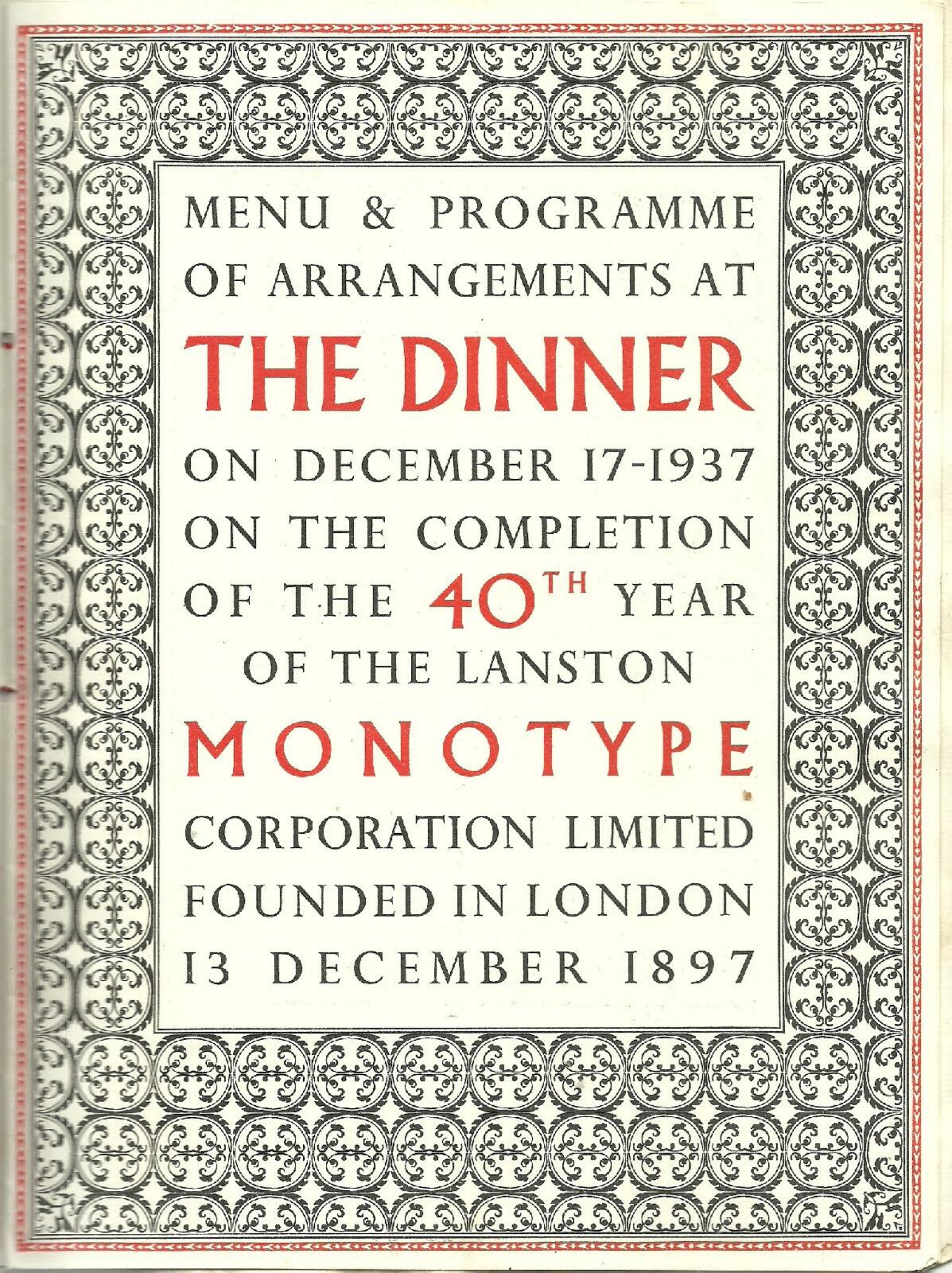
A red fabric ribbon is tied into a bow on the left edge of the page, serving as a bookmark.

**MONOTYPE**  
**1897-1937**



THE RT. HON. WINDHAM THOMAS WINDHAM-QUINN, FOURTH EARL OF DUNRAVEN AND MOUNT EARL, CHAIRMAN 1897-1924



MENU & PROGRAMME  
OF ARRANGEMENTS AT

**THE DINNER**

ON DECEMBER 17-1937

ON THE COMPLETION

OF THE **40<sup>TH</sup>** YEAR

OF THE LANSTON

**MONOTYPE**

CORPORATION LIMITED

FOUNDED IN LONDON

13 DECEMBER 1897

# THE MONOTYPE CORPORATION LTD

## ORIGINAL BOARD OF DIRECTORS 1897

*Chairman:* THE RIGHT HONOURABLE WINDHAM THOMAS WYNDHAM-QUINN  
FOURTH EARL OF DUNRAVEN AND MOUNT EARL 1897-1924

G. R. ASKWITH (now THE RIGHT HONOURABLE LORD ASKWITH, K.C.B., K.C.). Resigned 1911, on appointment as Industrial Commissioner to the Board of Trade.  
Rejoined Board, 1920.

HENRY COCKAYNE CUST, ESQ. Died 1917.

JOHN FARLOW WILSON, ESQ.  
Resigned 1915.

WILLIAM HEINEMANN, ESQ.  
Resigned 1900.

W. O. MORRISON, ESQ., *Vice-Chairman*.  
Chairman of Messrs. Morrison & Gibb, the well-known Edinburgh printers.

C. ARTHUR PEARSON, ESQ.  
Resigned 1900.

F. HEDLEY PECK, ESQ. Resigned Managing Directorship in 1900 but retained his seat on the Board. Died 1904.

WILLIAM I. BURCH, ESQ. *as Secretary (see below)*

## SUBSEQUENT ELECTIONS TO THE BOARD

A. H. JOHNSTONE-DOUGLAS, ESQ.  
Retired 1913.

HAROLD M. DUNCAN, ESQ. Died 1924.

A. WENHAM, ESQ. 1904.

J. MAURY DOVE, ESQ. Resigned 1909.

A. E. T. WATSON, ESQ. Died 1922.

WILLIAM I. BURCH, ESQ., *now Managing Director*.

SIR R. GEOFFREY ELLIS, BT., M.P., *now Chairman*, 1922.

M. HAROLD MACMILLAN, M.P., *now Vice-Chairman*, 1924.

THE RIGHT HONOURABLE REGINALD LE NORMAN BRABAZON, EARL OF MEATH, C.B., C.B.E., 1926.

SIR EUGENE RAMSDEN, M.P. 1935.

FRANK H. PIERPONT, ESQ. Died 1937.

## IMPORTANT DATES IN THE HISTORY OF THE CORPORATION

- 1887 The Monotype patented by T. Lanston.
- 1897 Dec. 13. Registration of the Lanston Monotype Corporation Limited.
- 1897 Dec. 13. Earl of Dunraven elected Chairman.
- 1898 Jan. 1. Mr. W. I. Burch appointed Secretary.
- 1898 May. Mr. F. H. Hedley Peek appointed Managing Director.
- 1898 First business offices were at 42 Drury Lane.
- 1899 Mr. H. M. Duncan appointed Managing Director.
- 1899 Mr. F. H. Pierpont appointed Works Manager.
- 1904 Feb. Removal of Head Office to 43 Fetter Lane.
- 1908 July 17. The capital of the Corporation reorganized.
- 1924 Mr. W. I. Burch appointed Managing Director.
- 1926 Lord Askwith elected Chairman.
- 1931 May 21. The firm's name changed to The Monotype Corporation Limited.
- 1935 Sir Geoffrey Ellis elected Chairman; Captain Harold Macmillan, Vice-Chairman.

# TOASTS

## THE KING

Proposed by The Chairman

## THE CORPORATION

Proposed by Mr. R. C. Elliott

Response by Sir R. Geoffrey Ellis, Bt., M.P., *Chairman*  
and

Mr. W. I. Burch, *Managing Director*

# MENU

Hors d'œuvre Variés

Consommé de Tortue

Crème de Tomates

Suprême de Sole Duglère

Petites Bouchées à la Reine

Dindonneau à la Broche

Cranberry Sauce

Pommes Rissolées

Xmas Pudding

Brandy Butter

Bombe Dame Blanche

Gaufrettes

Café

# PROGRAMME

*Dancing to commence at 9.30 (earlier if possible)*

JACK HYLTON'S BAND

Novelty Dance (Sunshades)      Spot Dance (Prizes)

*Cabaret - 10.30 to 11.15*

PETER DAWSON, Baritone, will sing

*Dancing to continue until - - 12.30 a.m.*

Novelty Dance (Chinese Lanterns) &c.

## BUFFET

PÂTISSERIES ASSORTIES

Madeleines d'Artois

Eclairs au Chocolat

Mirlitons Conversations

Tartettes aux Fruits

&c.

SANDWICHES

Various

GLACES

Vanilla Fraises Citron

Wafers

*Fruit Cup*

*Claret Cup*

*Lemonade*

*Tea*

*Coffee*

M. Worsley

J. W. Britton

J. Allen

W. Evans (Tollu Lane)